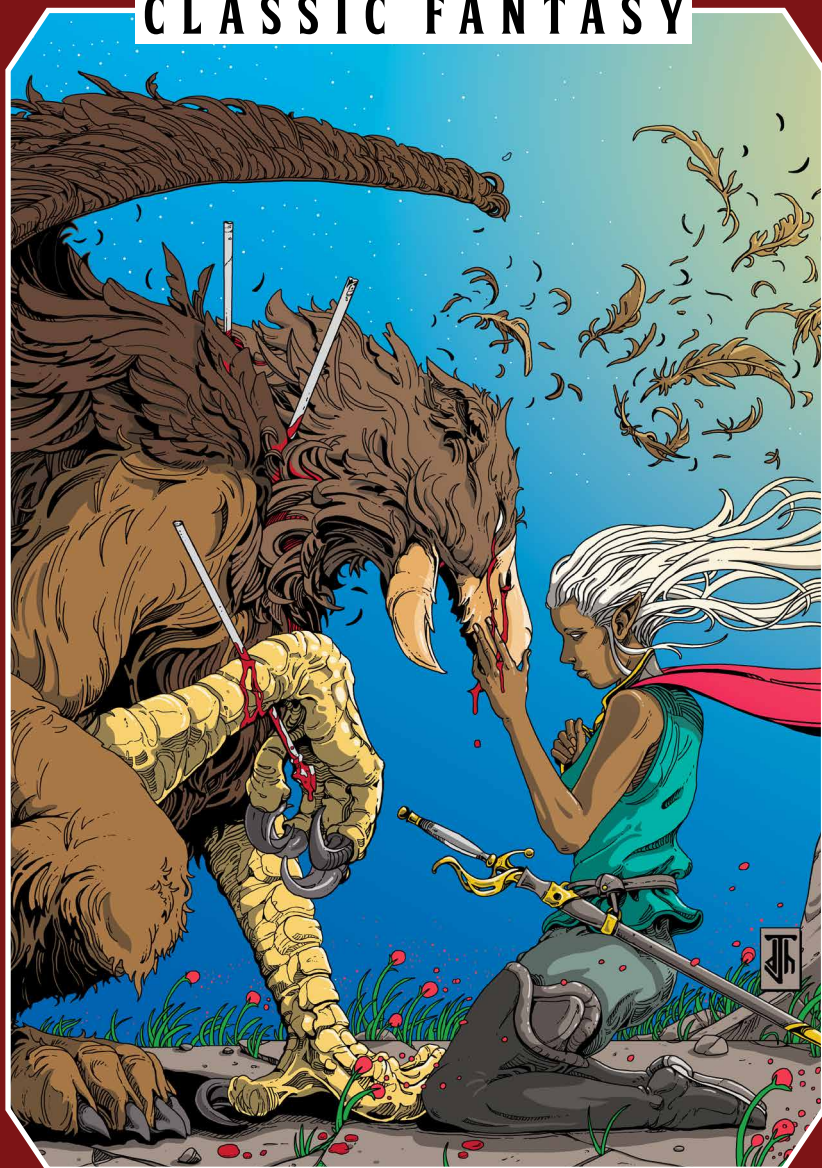


# OLD-SCHOOL ESSENTIALS

CLASSIC FANTASY



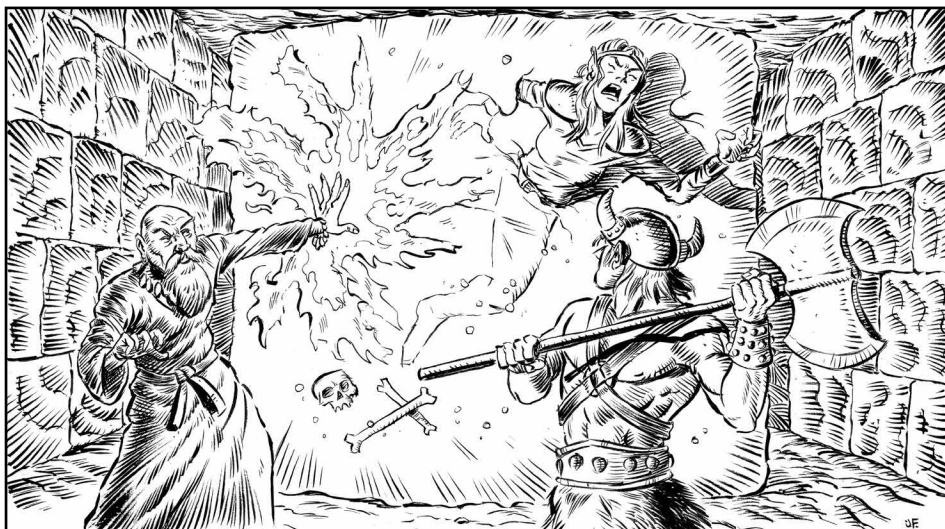
## Monsters



# OLD-SCHOOL ESSENTIALS

## CLASSIC FANTASY

### Monsters



**Writing, editing, layout:** Gavin Norman. **Cover art:** David Hoskins. **Interior art:** Jerry Boucher, Thomas Denmark, Jacob Fleming, Mike Hill, Tom Kilian, Mark Kosobucki, Adrian Landeros, Kyle Latino, Emma Lazauski, Mark Lyons, Chris Malec, Alex Mayo, Thomas Novosel, Juan Ochoa, Kyle Patterson, Stefan Poag, Sean Poppe, Spaghetti Quester, Rachel Quinlan, Matthew Ray, Luka Rejec, Justin Russell, Frank Scacalossi, Johannes Stahl, Del Teigeler, Andrew Walter. **Inspiration:** Gary Gyga, Dave Arneson, John Eric Holmes, Tom Moldvay, Steve Marsh, Dave Cook, Frank Mentzer.

Text and design © Gavin Norman 2019. Cover illustration © David Hoskins 2022. Illustrations on p. 42 © Jerry Boucher 2020; p. 27 (upper), 43, 48–49 Thomas Denmark 2020; p. 1 Jacob Fleming (© Necrotic Gnome 2021); p. 55 © Mike Hill 2019; p. 19, 36 (lower), 83, 84 © Tom Kilian 2019; p. 44 © Mark Kosobucki 2020; p. 14–15 © Adrian Landeros 2020; p. 8, 16, 36 (upper), 41, 50, 70 © Kyle Latino 2019; p. 66–67 © Emma Lazauski 2019; p. 6, 10, 17, 33 (lower), 61 © Mark Lyons 2020; p. 30, 59, 72 (upper), 75 © Chris Malec 2020; p. 11 © Alex Mayo 2019; p. 80 © Thomas Novosel 2019; p. 18, 24, 33 (upper), 54 © Juan Ochoa 2019; p. 34–35 Kyle Patterson (© Necrotic Gnome 2021); p. 27 (lower), 62 © Stefan Poag 2020; p. 21, 46 © Sean Poppe 2019; p. 13 © Spaghetti Quester 2019; p. 81 © Rachel Quinlan 2019; p. 28, 29, 63 © Matthew Ray 2019; p. 68 © Luka Rejec 2019; p. 22–23 Justin Russell (© Necrotic Gnome 2022); p. 7, 32, 40, 77 © Frank Scacalossi 2020; p. 2, 9, 18, 26, 28, 37, 38, 39, 47, 51, 52, 53, 57, 60, 64, 71 Frank Scacalossi (© Necrotic Gnome 2021); p. 72 (lower) © Johannes Stahl 2019; p. 3 © Del Teigeler 2020; p. 85 © Andrew Walter 2019. Dimitri © Fontali-cious – Derivative Versions © Font Bros. – [www.fontbros.com](http://www.fontbros.com). Economica © TipoType – Derivative Versions © Font Bros. – [www.fontbros.com](http://www.fontbros.com).



**NECROTIC  
GNOME**



**EXALTED  
FUNERAL**

# TABLE OF CONTENTS

<b>Introduction</b>	<b>3</b>	<b>NPC Encounters</b>	<b>82</b>
<b>Monsters</b>	<b>4</b>	Adventuring Parties	82
Game Statistics	4	Strongholds	84
General Notes	5	<b>Open Game License</b>	<b>86</b>
Monster Descriptions	6	<b>Index of Monsters</b>	<b>88</b>
<b>Encounter Tables</b>	<b>74</b>		
Dungeons	74		
Wilderness	76		



*Old-School Essentials* is a trademark of Necrotic Gnome. This product is released under the terms of the Open Game License Version 1.0a, Copyright 2000, Wizards of the Coast, Inc.

# INTRODUCTION

This is the fourth book in the *Old-School Essentials Classic Game Set*, presenting a horrible horde of monsters to challenge characters of all levels!

## Part 1: Monsters

Gives an overview of the various game statistics that describe monsters and lists over 200 fearsome monsters, presented in alphabetical order. Some of the most important types of monsters presented are:

- **Animals:** From the mundane to the fantastic: bears, boars, horses, herd animals, great cats, giant rats, giant bats, owl bears, and many more.
- **Dragons:** The six classic dragons (black, blue, gold, green, red, and white), plus aquatic dragons and dragon turtles.
- **Humanoids:** From the tiny to the towering: kobolds, goblins, orcs, gnolls, ogres, and giants of all kinds!
- **Humans:** A full range of human encounters: acolytes, bandits, berserkers, nobles, pirates, veterans, and more.
- **Undead:** Denizens of forlorn ruins and accursed crypts: zombies, skeletons, ghouls, wraiths, vampires, and more.

## Part 2: Encounter Tables

Provides full encounter tables for all dungeon levels and types of wilderness terrain, allowing the referee to quickly roll up challenging and varied encounters.

## Part 3: NPC Encounters

Provides tables for generating rival adventuring parties and encounters with strongholds in the wilderness.

## Thanks

To the indomitable proofreaders who helped make this book shine: Adam Baulderstone, Alistair Caunt, Caleb Collins, Chuck Glisson, Noah Green, Keith Hann, Ian Helmke, Michael Julius, Frederick Münch, Eric Nieudan, Ray Otus, Alexander Parker, Glenn Robinson, Stuart A. Roe, Tim Scott, Thorin Thompson, Perttu Vedenoja.



# MONSTERS

## GAME STATISTICS

Monsters are described by the following statistics.

### Armour Class (AC)

The monster's ability to avoid damage in combat.

**Ascending AC:** The optional AAC score is listed afterwards in square brackets.

### Hit Dice (HD)

The number of d8s rolled to determine an individual's hit points.

**Asterisks:** One or more asterisks after the HD number indicate the number of special abilities the monster has, for the purpose of XP calculation (see *Awarding XP* in *Classic Fantasy: Adventures*).

**Hit point modifiers:** Modifiers to the HD (e.g. +3, -1) are applied to the hp total after rolling the specified number of d8s. Monsters with a hit point modifier are treated specially by some spells.

**Fractional Hit Dice:** Some monsters are listed as having less than one HD, either as ½ (roll 1d4) or as a fixed number of hp.

**Average hit points:** The average hit point value is listed in parentheses.

### Attacks Usable Per Round (Att)

The attacks that the monster can use each round, with the inflicted damage in parentheses. (Note that monsters' attack and damage rolls are not modified by STR or DEX, unless specified.)

**Alternative attack routines:** Are noted with "or" or square brackets.

### Saving Throw Values (SV)

The monster's saving throw values:

- ▶ **D:** Death/poison.
- ▶ **W:** Wands.
- ▶ **P:** Paralysis/petrification.
- ▶ **B:** Breath attacks.
- ▶ **S:** Spells/rods/staves.

**Save as HD:** The HD at which the monster saves is listed in parentheses (with NH indicating that it saves as a normal human). This is usually the monster's HD rating, but sometimes differs:

- ▶ **Unintelligent monsters:** Typically save at half their HD rating.
- ▶ **Magical monsters:** May save at a higher HD rating.
- ▶ **Character classes:** Some monsters save as a character class. In this case, the class and level are listed.

### Attack Roll "to Hit AC 0" (THACO)

The monster's ability to hit foes in combat, determined by its Hit Dice (see *Combat Tables* in *Classic Fantasy: Adventures*).

**Attack bonus:** The monster's attack bonus (required when using the optional rule for Ascending AC) is listed afterwards in square brackets.

### Movement Rate (MV)

The speed at which the monster can move. Every monster has a *base movement rate* and an *encounter movement rate* (noted in parentheses, one third of the base movement rate).

**Modes of movement:** If the monster has multiple modes of movement (e.g. walking, flying, climbing), they are listed individually, separated by slashes.

## Morale Rating (ML)

The monster's likelihood to persist in battle. See *Morale* in *Classic Fantasy: Adventures*.

## Alignment (AL)

The monster's affiliation to Law, Neutrality, or Chaos. If "any" is listed, the referee may roll randomly or choose the creature's alignment.

## XP Award (XP)

Pre-calculated XP award for defeating the monster.

## Number Appearing (NA)

Listed as two values, the second in parentheses.

**Zeros:** If the first value is a zero, monsters of this type are not usually encountered in dungeons. If the second value is a zero, monsters of this type are not usually encountered in the wilderness and do not usually have lairs.

**Usage:** The use of these values depends on the situation in which monsters are encountered:

- ▶ **Wandering monsters in a dungeon:** The first value determines the number of monsters encountered roaming in a dungeon level equal to their HD. If the monster is encountered on a level greater than its HD, the number appearing may be increased; if encountered on a level less than its HD, the number appearing should be reduced.
- ▶ **Monster lair in a dungeon:** The second value lists the number of monsters found in a lair in a dungeon.
- ▶ **Wandering monsters in the wilderness:** The second value indicates the number of monsters encountered roaming in the wilderness.
- ▶ **Monster lair in the wilderness:** The second value multiplied by 5 indicates the number of monsters found in a lair in the wilderness.

## Treasure Type (TT)

The letter code used to determine the amount and type of treasure possessed by the monster(s) (see *Treasure Types* in *Classic Fantasy: Treasures*):

- ▶ **A to O:** Indicate a hoard: the sum wealth of a large monster or a community of smaller monsters, usually hidden in the lair. For monsters with a lair encounter size (see *Number Appearing*) of greater than 1d4, the amount of treasure in the hoard may be reduced, if the number of monsters is below average.
- ▶ **P to V:** If listed for an intelligent monster, indicate treasure carried by individuals (P to T) or a group (U, V). If listed for an unintelligent monster, indicate treasure from the bodies of its victims.

# GENERAL NOTES

## Infravision

All non-human monsters have infravision (see *Darkness* under *Hazards and Challenges* in *Classic Fantasy: Adventures*). Unless specified in a monster's description, this allows monsters to see in the dark up to 60'.

## Languages

20% of intelligent monsters speak Common (see *Languages* in *Classic Fantasy: Characters*), unless the monster description states otherwise. Intelligent monster species also often have their own tongue.

## Persons

Some spells or magical effects only affect creatures classified as "persons". This includes all humans and demihumans, as well as human-like monsters of up to 4+1 HD. The referee should decide which monsters are affected (a suggested list is given overleaf).



# MONSTER DESCRIPTIONS

## Acolyte

1st level clerics on a quest for their deity.

**AC** 2 [17], **HD** 1 (4hp), **Att** 1 × mace (1d6), **THAC0** 19 [0], **MV** 60' (20'), **SV** D11 W12 P14 B16 S15 (Cleric 1), **ML** 7, **AL** Any, **XP** 10, **NA** 1d8 (1d20), **TT** U

► **Leader:** Groups of 4+ are led by a higher level cleric (1d10: 1–4: 2nd level, 5–7: 3rd level, 8–9: 4th level, 10: 5th level). Choose or roll the leader's spells.

## Ape, White

Albino, herbivorous, gorilla-like apes that live in caves and emerge at night to forage.

**AC** 6 [13], **HD** 4 (18hp), **Att** 2 × claw (1d4) or 1 × thrown rock (1d6), **THAC0** 16 [+3], **MV** 120' (40'), **SV** D12 W13 P14 B15 S16 (2), **ML** 7, **AL** Neutral, **XP** 75, **NA** 1d6 (2d4), **TT** None

► **Territorial:** Defend their lair with threats and, if this is ignored, violence.

## Bandit

NPC thieves who live by robbery.

**AC** 6 [13], **HD** 1 (4hp), **Att** 1 × weapon (1d6 or by weapon), **THAC0** 19 [0], **MV** 120' (40'), **SV** D13 W14 P13 B16 S15 (Thief 1), **ML** 8, **AL** Neutral or Chaotic, **XP** 10, **NA** 1d8 (3d10), **TT** U (A)

- **Trickery:** Use disguise or trickery to surprise victims.
- **Leader:** May have a leader of 2nd level or higher (any human class).
- **Hoard:** Only have treasure type A when encountered in their wilderness lair.

## Persons

The following monsters in this book are classified as “persons”, for the sake of magical effects: acolyte, bandit, berserker, brigand, buccaneer, bugbear, dervish, dryad, dwarf, elf, gnom, gnome, goblin, halfling, hobgoblin, kobold, lizard man, medium, merchant, merman, neanderthal, nixie, noble, nomad, normal human, ogre, orc, pirate, pixie, sprite, trader, troglodyte, veteran.

## Basilisk

10' long, serpentine lizards. Unintelligent, but highly magical. Dwell in caverns and twisted brambles.

**AC** 4 [15], **HD** 6+1\*\* (28hp), **Att** 1 × bite (1d10 + petrification), 1 × gaze (petrification), **THAC0** 13 [+6], **MV** 60' (20'), **SV** D10 W11 P12 B13 S14 (6), **ML** 9, **AL** Neutral, **XP** 950, **NA** 1d6 (1d6), **TT** F

- **Surprise:** Characters surprised by a basilisk meet its gaze.
- **Petrifying touch:** Anyone touched by a basilisk is turned to stone (**save vs petrify**).
- **Petrifying gaze:** Anyone meeting a basilisk's gaze is turned to stone (**save versus petrify**). Unless averting eyes or using a mirror, characters in melee are affected each round.
- **Averting eyes:** -4 penalty to hit; the basilisk gains a +2 bonus to attack.
- **Mirrors:** The reflection of a basilisk is harmless. Fighting by looking in a mirror incurs a -1 penalty to attack. If a basilisk sees its own reflection (2-in-6 chance), it must save or be petrified.

## Bat

Nocturnal, flying mammals that roost in caves or ruins.

- **Echolocation:** Unaffected by effects that impair, modify, or rely on sight. Blinded by magical silence.

### Giant Bat

Carnivorous bats that may attack adventurers, if hungry. 1-in-20 groups of giant bats are vampiric (see *Giant Vampire Bat*).

**AC** 6 [13], **HD** 2 (9hp), **Att** 1 × bite (1d4), **THAC0** 18 [+1], **MV** 30' (10') / 180' (60') flying, **SV** D12 W13 P14 B15 S16 (1), **ML** 8, **AL** Neutral, **XP** 20, **NA** 1d10 (1d10), **TT** None

- **Echolocation:** See main entry.



### Giant Vampire Bat

**AC** 6 [13], **HD** 2 (9hp), **Att** 1 × bite (1d4 + unconsciousness), **THAC0** 18 [+1], **MV** 30' (10') / 180' (60') flying, **SV** D12 W13 P14 B15 S16 (1), **ML** 8, **AL** Neutral, **XP** 20, **NA** 1d10 (1d10), **TT** None

- **Echolocation:** See main entry.
- **Unconsciousness:** For 1d10 rounds (**save versus paralysis**).
- **Blood drain:** A vampire bat may drain blood from an unconscious victim: 1d4 hit points automatic damage per round. A victim killed by blood drain becomes undead (possibly a vampire) after 24 hours (**save versus spells**).

### Normal Bat

**AC** 6 [13], **HD** 1hp, **Att** 1 × swarm (confusion), **THAC0** 20 [-1], **MV** 9' (3') / 120' (40') flying, **SV** D14 W15 P16 B17 S18 (NH), **ML** 6, **AL** Neutral, **XP** 5, **NA** 1d100 (1d100), **TT** None

- **Echolocation:** See main entry.
- **Swarm:** 10 bats can swarm around a target's head, causing confusion: -2 to attack rolls and saves; unable to cast spells.
- **Attacks:** As normal human.
- **Flighty:** Unless magically summoned or controlled, normal bats check morale every round.



## Bear

► **Bear hug:** If a victim is hit by both claw attacks in the same round, the bear hugs for an extra 2d8 automatic damage.

### Black Bear

6' tall; favour eating berries and roots.

**AC** 6 [13], **HD** 4 (18hp), **Att** 2 × claw (1d3), 1 × bite (1d6), **THAC0** 16 [+3], **MV** 120' (40'), **SV** D12 W13 P14 B15 S16 (2), **ML** 7, **AL** Neutral, **XP** 75, **NA** 1d4 (1d4), **TT** U

► **Bear hug:** See main entry.

► **Defensive:** Adults will protect their young with their lives, but otherwise only attack if cornered.

► **Camp raids:** Sometimes raid camps, for food (especially fish and sweet treats).

### Cave Bear

Ferocious, 15' tall grizzly bears found in caves and Lost World settings. Omnivorous, but prefer meat, including humans.

**AC** 5 [14], **HD** 7 (31hp), **Att** 2 × claw (1d8), 1 × bite (2d6), **THAC0** 13 [+6], **MV** 120' (40'), **SV** D12 W13 P14 B15 S16 (3), **ML** 9, **AL** Neutral, **XP** 450, **NA** 1d2 (1d2), **TT** V

► **Bear hug:** See main entry.

► **Sense of smell:** Poor eyesight, but keen sense of smell. When hungry, will follow a track of blood by scent.

### Grizzly Bear

Aggressive, 9' tall. Silver-tipped fur, brown or reddish brown in colour. Live in forests and mountains. Favour eating meat.

**AC** 6 [13], **HD** 5 (22hp), **Att** 2 × claw (1d4), 1 × bite (1d8), **THAC0** 15 [+4], **MV** 120' (40'), **SV** D12 W13 P14 B15 S16 (2), **ML** 8, **AL** Neutral, **XP** 175, **NA** 1 (1d4), **TT** U

► **Bear hug:** See main entry.

### Polar Bear

Aggressive, white-furred bears that stand 11' tall and live in cold regions. Favour eating fish.

**AC** 6 [13], **HD** 6 (27hp), **Att** 2 × claw (1d6), 1 × bite (1d10), **THAC0** 14 [+5], **MV** 120' (40'), **SV** D12 W13 P14 B15 S16 (3), **ML** 8, **AL** Neutral, **XP** 275, **NA** 1 (1d2), **TT** U

► **Bear hug:** See main entry.

► **Swimming:** Excellent swimmers.

► **Snow walk:** Wide paws allow running on the surface of snow without sinking.

## Beetle, Giant

### Fire Beetle

2½' long. Commonly found underground.

**AC** 4 [15], **HD** 1+2 (6hp), **Att** 1 × bite (2d4), **THAC0** 18 [+1], **MV** 120' (40'), **SV** D12 W13 P14 B15 S16 (1), **ML** 7, **AL** Neutral, **XP** 15, **NA** 1d8 (2d6), **TT** None

► **Glowing nodules:** Three glowing glands (two above the eyes, one on the abdomen) cast light in a 10' radius. If removed, keep glowing for 1d6 days.

### Oil Beetle

3' long, burrowing beetles sometimes encountered below ground.

**AC** 4 [15], **HD** 2\* (9hp), **Att** 1 × bite (1d6), 1 × oil spray (blistering), **THAC0** 18 [+1], **MV** 120' (40'), **SV** D12 W13 P14 B15 S16 (1), **ML** 8, **AL** Neutral, **XP** 25, **NA** 1d8 (2d6), **TT** None

► **Oil spray:** Use when attacked. Targets one opponent within 5'. A hit causes painful blistering: -2 to attack rolls for 24 hours. *Cure light wounds* can be used to cure this, instead of restoring hit points.



## Tiger Beetle

Carnivorous, 4' long, tiger-striped beetles with powerful, crushing mandibles. Hunt robber flies, but sometimes eat humans.

**AC** 3 [16], **HD** 3+1 (14hp), **Att** 1 × bite (2d6), **THAC0** 16 [+3], **MV** 150' (50'), **SV** D12 W13 P14 B15 S16 (1), **ML** 9, **AL** Neutral, **XP** 50, **NA** 1d6 (2d4), **TT** U

## Berserker

Fighters who enter a rage in battle. They never take prisoners.

**AC** 7 [12], **HD** 1+1\* (5hp), **Att** 1 × weapon (1d8 or by weapon), **THAC0** 18 [+1], **MV** 120' (40'), **SV** D12 W13 P14 B15 S16 (1), **ML** 12, **AL** Neutral, **XP** 19, **NA** 1d6 (3d10), **TT** P (B)

► **Battle rage:** +2 to hit humans and similar humanoids (e.g. orcs, goblins). Rage sometimes makes them attack their allies.

► **Hoard:** Only have treasure type B when encountered in the wilderness.

## Black Pudding

Huge (5'–30' across), mindless blobs of amorphous black jelly. Driven by ravenous hunger.

**AC** 6 [13], **HD** 10\* (45hp), **Att** 1 × touch (3d8), **THAC0** 11 [+8], **MV** 60' (20'), **SV** D10 W11 P12 B13 S14 (5), **ML** 12, **AL** Neutral, **XP** 1,600, **NA** 1 (0), **TT** None

► **Immunity:** Only harmed by fire-based attacks.

► **Division:** Non-fire attacks (including spells) cause the pudding to divide. Each hit creates a 2HD pudding that does 1d8 damage.

► **Erode wood and metal:** Can dissolve wood or metal in one turn.

► **Cling:** Can move across walls and ceilings.

► **Seep:** Can squeeze through small holes and cracks.



## Blink Dog

Highly intelligent, dingo-like dogs that live in packs. Have the innate ability to blink in and out of existence.

**AC** 5 [14], **HD** 4\* (18hp), **Att** 1 × bite (1d6), **THAC0** 16 [+3], **MV** 120' (40'), **SV** D10 W11 P12 B13 S14 (4), **ML** 6, **AL** Lawful, **XP** 125, **NA** 1d6 (1d6), **TT** C

► **Blink:** In combat, teleport close to an enemy, attack, then reappear 1d4 × 10' away. If they have initiative, can blink away without the opponent being able to counter-attack.

► **Disappear:** If in serious danger, the pack can flee by entirely disappearing.

► **Hate warp beasts:** Always attack.

## Boar

Omnivorous wild boars that dwell primarily in forests. Can be irascible and dangerous, if disturbed.

**AC** 7 [12], **HD** 3 (13hp), **Att** 1 × tusk (2d4), **THAC0** 17 [+2], **MV** 150' (50'), **SV** D12 W13 P14 B15 S16 (2), **ML** 9, **AL** Neutral, **XP** 35, **NA** 1d6 (1d6), **TT** None

## Brigand

Outlaws and mercenaries who make a living by raiding settlements and attacking travellers.

**AC** 6 [13], 4 [15], or 3 [16], **HD** 1 (4hp), **Att** 1 × weapon (1d6 or by weapon), **THAC0** 19 [0], **MV** 120' (40'), **SV** D12 W13 P14 B15 S16 (1), **ML** 8, **AL** Chaotic, **XP** 10, **NA** 0 (1d4 × 10), **TT** A

► **Footmen:** Half the group has: leather armour, shield, sword, shortbow.

► **Cavalry:** The other half is mounted on riding horses and has: chainmail, shield, sword.

► **Leaders and commanders:** For every 20 brigands, there is a leader (2nd level fighter). For every 40 brigands, there is a commander (4th level fighter). Leaders ride war horses (with barding) and have: plate mail, sword, lance.

► **Fortified camps:** Bands commonly combine and live in a camp of 5d6 × 10 brigands.

► **Camp leaders:** Combined camps are led by a 9th level fighter, plus a 5th level fighter for every 50 brigands. Also 50% chance of a magic-user (level 1d3 + 8); 30% chance of a cleric (8th level).

## Buccaneer

Sailors who make a living by raiding coastal settlements and robbing other ships. Typically ply rivers, lakes, and coastal waters; occasionally oceans.

**AC** 7 [12] or 5 [14], **HD** 1 (4hp), **Att** 1 × weapon (1d6 or by weapon), **THAC0** 19 [0], **MV** 120' (40'), **SV** D12 W13 P14 B15 S16 (1), **ML** 6, **AL** Neutral, **XP** 10, **NA** 0 (see below), **TT** A

► **Ships and crew:** Depends where encountered. Rivers or lakes: 1d8 river boats (1d2 × 10 buccaneers each); coastal waters: 1d6 small galleys (1d3+1 × 10 buccaneers each); any: 1d4 longships (1d3+2 × 10 buccaneers each); ocean: 1d3 small warships (1d5+3 × 10 buccaneers each). (See *Water Vessels* in *Classic Fantasy: Characters* for details on ships.)

► **Arms:** 60% of group have: leather armour, sword; 30% have: leather armour, sword, crossbow; 10% have: chainmail, sword, crossbow.

► **Leaders and captains:** For every 30 buccaneers, there is a 4th level fighter. Each ship has a captain (7th level fighter).

► **Fleet commander:** 9th level fighter. 30% chance of a magic-user (level 1d2 + 9); 25% chance of a cleric (8th level).

► **Treasure:** Divided between vessels. Instead of carrying aboard, may have a map to where it is buried.

► **Havens:** Lawless, fortified, coastal towns may act as a haven for buccaneers and pirates.



## Bugbear

Large, hairy goblins with an ungainly gait. Favour attacking by surprise.

**AC** 5 [14], **HD** 3+1 (14hp), **Att** 1 × weapon (2d4 or by weapon +1), **THAC0** 16 [+3], **MV** 90' (30'), **SV** D12 W13 P14 B15 S16 (3), **ML** 9, **AL** Chaotic, **XP** 50, **NA** 2d4 (5d4), **TT** B

► **Surprise:** On a 1–3, due to stealth.

## Caecilia

Gigantic (30' long), grey, worm-like amphibians, with huge, toothed maws.

**AC** 6 [13], **HD** 6\* (27hp), **Att** 1 × bite (1d8), **THAC0** 14 [+5], **MV** 60' (20'), **SV** D12 W13 P14 B15 S16 (3), **ML** 9, **AL** Neutral, **XP** 500, **NA** 1d3 (1d3), **TT** B

► **Swallow whole:** On a natural 19 or 20 attack roll. Inside the monster's belly: suffer 1d8 damage per round (until the caecilia dies); may attack with a dagger at –4 to hit; body digested in 6 turns after death.

## Camel

Irascible animals that are adapted to life in dry climates. Often used for transportation in deserts.

**AC** 7 [12], **HD** 2 (9hp), **Att** 1 × bite (1), 1 × hoof (1d4), **THAC0** 18 [+1], **MV** 150' (50'), **SV** D12 W13 P14 B15 S16 (1), **ML** 7, **AL** Neutral, **XP** 20, **NA** 0 (2d4), **TT** None

► **Ill-tempered:** Bite or kick creatures in their way, including owners.

► **Water:** After drinking well, can survive 2 weeks without water.

► **Desert travel:** Move at full speed through broken lands and deserts.

► **Carry loads:** Up to 3,000 coins unencumbered; up to 6,000 at half speed.

► **Charge attacks:** Are not possible, when mounted on a camel.

## Carcass Crawler

9' long, 3' high, many-legged, segmented worms with a ring of 2' long tentacles around their mouths.

**AC** 7 [12], **HD** 3+1\* (14hp), **Att** 8 × tentacle (paralysis), **THAC0** 16 [+3], **MV** 120' (40'), **SV** D12 W13 P14 B15 S16 (2), **ML** 9, **AL** Neutral, **XP** 75, **NA** 1d3 (1d3), **TT** B

- **Paralysis:** A hit by a tentacle causes paralysis for 2d4 turns (**save versus paralysis**). Paralysed victims will be devoured, if the crawler is left in peace.
- **Cling:** Can walk on walls and ceilings.

## Cat, Great

Cautious hunters that usually avoid combat with humans unless starving or cornered. Great cats may be playful, but are quick to anger. They remain outdoors, rarely venturing deep underground.

- **Pursuit:** Always pursue prey that flees.
- **Favoured prey:** Often develop a taste for a certain type of meat (this may include humans!), hunting that creature with preference.
- **Inquisitive:** May follow PCs out of curiosity.

## Lion

Hunt in groups called “prides”. Live in hot regions, typically in savannah or scrublands close to deserts.

**AC** 6 [13], **HD** 5 (22hp), **Att** 2 × claw (1d4+1), 1 × bite (1d10), **THAC0** 15 [+4], **MV** 150' (50'), **SV** D12 W13 P14 B15 S16 (3), **ML** 9, **AL** Neutral, **XP** 175, **NA** 1d4 (1d8), **TT** U

- **Pursuit:** See main entry.

## Mountain Lion

Have yellow-brown fur and favour mountains, deserts, and forests. Will occasionally venture into dungeons.

**AC** 6 [13], **HD** 3+2 (15hp), **Att** 2 × claw (1d3), 1 × bite (1d6), **THAC0** 16 [+3], **MV** 150' (50'), **SV** D12 W13 P14 B15 S16 (2), **ML** 8, **AL** Neutral, **XP** 50, **NA** 1d4 (1d4), **TT** U

- **Pursuit:** See main entry.

## Panther

High-speed hunters that live in plains and forests.

**AC** 4 [15], **HD** 4 (18hp), **Att** 2 × claw (1d4), 1 × bite (1d8), **THAC0** 16 [+3], **MV** 210' (70'), **SV** D12 W13 P14 B15 S16 (2), **ML** 8, **AL** Neutral, **XP** 75, **NA** 1d2 (1d6), **TT** U

- **Pursuit:** See main entry.

## Sabre-Toothed Tiger

Huge, aggressive cats with foot-long fangs. Normally only found in Lost World regions.

**AC** 6 [13], **HD** 8 (36hp), **Att** 2 × claw (1d8), 1 × bite (2d8), **THAC0** 12 [+7], **MV** 150' (50'), **SV** D10 W11 P12 B13 S14 (4), **ML** 10, **AL** Neutral, **XP** 650, **NA** 1d4 (1d4), **TT** V

- **Pursuit:** See main entry.

## Tiger

Large, solitary hunters with striped camouflage markings. Favour woodlands and cooler regions.

**AC** 6 [13], **HD** 6 (27hp), **Att** 2 × claw (1d6), 1 × bite (2d6), **THAC0** 14 [+5], **MV** 150' (50'), **SV** D12 W13 P14 B15 S16 (3), **ML** 9, **AL** Neutral, **XP** 275, **NA** 1 (1d3), **TT** U

- **Pursuit:** See main entry.
- **Surprise:** On a 1–4, in woodland, due to camouflage.

## Cave Locust

2–3' long, herbivorous, giant crickets that dwell in caverns.

**AC** 4 [15], **HD** 2 (9hp), **Att** 1 × bite (1d2) or 1 × jump (1d4) or 1 × spit (stench), **THAC0** 18 [+1], **MV** 60' (20') / 180' (60') flying, **SV** D12 W13 P14 B15 S16 (2), **ML** 5, **AL** Neutral, **XP** 20, **NA** 2d10 (1d10), **TT** None

- **Blend in with stone:** May be overlooked or mistaken for statues, due to their stony colouration.
- **Shriek:** If attacked or frightened, shriek to warn others. This may attract wandering monsters (20% chance per round).
- **Jump:** Very skittish. If attacked, usually flee by jumping up to 60' then flying away. 50% chance of jumping at a random opponent, in which case treat the jump as an attack.
- **Spit:** Used defensively. 10' range. Target treated as AC 9 [10]. The affected character is covered in stinking spittle: unable to act for 1 turn (**save versus poison**). Until the goo is washed off, others who come within 5' must also **save versus poison** or be violently sick.
- **Poison immunity:** Immune to yellow mould (p73) and most poisons, due to their habit of eating fungi.

## Centaur

Fantastic creatures with the legs and body of a horse, and the upper body and head of a human. Live in small family or tribal groups, in wild meadows and isolated forests.

**AC** 5 [14], **HD** 4 (18hp), **Att** 2 × hoof (1d6), 1 × weapon (1d6 or by weapon), **THAC0** 16 [+3], **MV** 180' (60'), **SV** D10 W11 P12 B13 S14 (4), **ML** 8, **AL** Neutral, **XP** 75, **NA** 0 (2d10), **TT** A

- **Weapons:** Bows, clubs, lances.
- **Lair:** Hidden in dense woods, along twisting, guarded paths.
- **Females and young:** Normally remain in the lair. Flee if attacked. Young have 2HD and make 2 hoof attacks (1d2) and 1 weapon attack (1d4 or by weapon).

## Centipede, Giant

1' long centipedes that dwell in dark, damp locations.

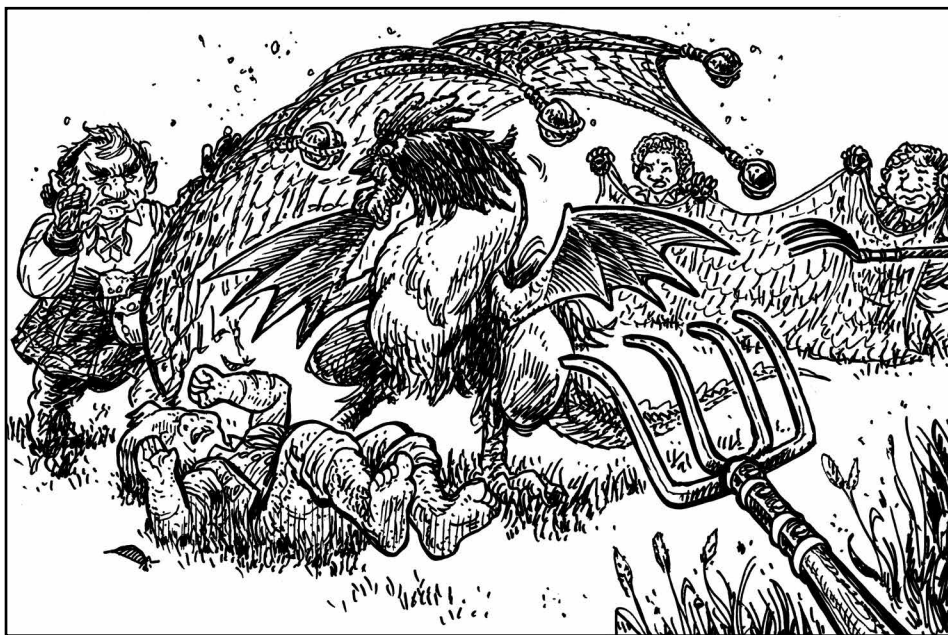
**AC** 9 [10], **HD** ½\* (2hp), **Att** 1 × bite (poison), **THAC0** 19 [0], **MV** 60' (20'), **SV** D14 W15 P16 B17 S18 (NH), **ML** 7, **AL** Neutral, **XP** 6, **NA** 2d4 (1d8), **TT** None

- **Poison:** Causes victims to become horribly sick for ten days (**save versus poison**): no physical activity possible except half speed movement.









## Chimera

Horrific, hybrid monstrosities with the forequarters of a lion, the hindquarters of a goat, the wings of a dragon, and three heads: goat, lion, and dragon. Dwell in wild, hilly areas, or sometimes in dungeons.

**AC** 4 [15], **HD** 9\*\* (40hp), **Att** 2 × claw (1d3), goat: 1 × gore (2d4), lion: 1 × bite (2d4), dragon: 1 × bite (3d4) or 1 × breath (3d6), **THAC0** 12 [+7], **MV** 120' (40') / 180' (60') flying, **SV** D8 W9 P10 B10 S12 (9), **ML** 9, **AL** Chaotic, **XP** 2,300, **NA** 1d2 (1d4), **TT** F

► **Attack pattern:** Dragon head: 50% chance of breath attack, otherwise bites.

► **Breath weapon:** Cone of fire: end 10' wide, 50' long. Can be used up to three times per day.

## Cockatrice

Small, magical, bird / reptile hybrids with long serpent tails and the head, legs, and wings of a cockerel. Live in all environments.

**AC** 6 [13], **HD** 5\*\* (22hp), **Att** 1 × beak (1d6 + petrification), **THAC0** 15 [+4], **MV** 90' (30') / 180' (60') flying, **SV** D10 W11 P12 B13 S14 (5), **ML** 7, **AL** Neutral, **XP** 425, **NA** 1d4 (1d8), **TT** D

► **Petrification:** Anyone touched is turned to stone (**save versus petrify**).

## Crab, Giant

Unintelligent crustaceans that lurk in coastal waters and creep along beaches. Cannot swim.

**AC** 2 [17], **HD** 3 (13hp), **Att** 2 × pincer (2d6), **THAC0** 17 [+2], **MV** 60' (20'), **SV** D12 W13 P14 B15 S16 (2), **ML** 7, **AL** Neutral, **XP** 35, **NA** 1d2 (1d6), **TT** None

► **Ravenous:** Attack any moving creature.

## Crocodile

Large reptiles that are ungainly on land and live primarily in water, lurking just beneath the surface of subtropical swamps and lazy rivers. If hungry, attack any creatures that venture into the water.

► **Feeding frenzy:** Attracted to the scent of blood or violent movement in the water.

### Giant Crocodile

More than 50' long. Usually encountered in Lost World regions. Will attack small ships.

---

**AC** 1 [18], **HD** 15 (67hp), **Att** 1 × bite (3d8), **THAC0** 9 [+10], **MV** 90' (30') / 90' (30') swimming, **SV** D8 W9 P10 B10 S12 (8), **ML** 9, **AL** Neutral, **XP** 1,350, **NA** 0 (1d3), **TT** None

---

### Large Crocodile

20' or more long. May attack small watercraft (canoes, rafts).

---

**AC** 3 [16], **HD** 6 (27hp), **Att** 1 × bite (2d8), **THAC0** 14 [+5], **MV** 90' (30') / 90' (30') swimming, **SV** D12 W13 P14 B15 S16 (3), **ML** 7, **AL** Neutral, **XP** 275, **NA** 0 (1d4), **TT** None

---

### Normal Crocodile

---

**AC** 5 [14], **HD** 2 (9hp), **Att** 1 × bite (1d8), **THAC0** 18 [+1], **MV** 90' (30') / 90' (30') swimming, **SV** D12 W13 P14 B15 S16 (1), **ML** 7, **AL** Neutral, **XP** 20, **NA** 0 (1d8), **TT** None

---





## Cyclops

20' tall humanoids with a single, central eye. Dwell in caves, alone or in small groups. Cultivate grapes and raise sheep.

**AC** 5 [14], **HD** 13\* (58hp), **Att** 1 × club (3d10) or 1 × rock (3d6), **THAC0** 10 [+9], **MV** 90' (30'), **SV** D4 W5 P6 B5 S8 (13), **ML** 9, **AL** Chaotic, **XP** 2,300, **NA** 1 (1d4), **TT** E + 5,000gp

- ▶ **Attack penalty:** -2 penalty on all hit rolls, due to limited depth perception.
- ▶ **Rock throwing:** Up to 200'.
- ▶ **Slow-witted:** Can be tricked by clever PCs.
- ▶ **Curse:** 1-in-20 cyclops can place a curse on a character once a week. **Save versus spells** or be afflicted by a curse of the referee's choosing. (Maximum possible effects: -2 penalty to saves, -4 penalty to hit, an ability score reduced by 50%.)

## Dervish

Fanatically religious, nomadic people who wander steppes and desert regions, living in tents.

**AC** 6 [13] or 4 [15], **HD** 1 (4hp), **Att** 1 × weapon (1d6 or by weapon), **THAC0** 19 [0], **MV** 120' (40'), **SV** D12 W13 P14 B15 S16 (1), **ML** 10, **AL** Lawful, **XP** 10, **NA** 0 (1d6+1 × 10), **TT** A

- ▶ **Mounted:** On warhorses.
- ▶ **Arms:** 50% of group have: leather armour, shield, lance; 25% have: leather armour, shield, shortbow, sword; 25% have: chainmail, shield, lance.
- ▶ **Camps:** Groups commonly combine and live in a camp or tribe of up to 300 dervishes, plus women, children, and animals. 25% chance of a wood or brick enclosure.
- ▶ **Camp leaders:** Led by 10th level cleric.
- ▶ **Intolerant:** Of other religious views.
- ▶ **Holy war:** Occasionally wage war against other religious factions. Will slay people of different faith, or take them prisoner. Prisoners must convert; otherwise killed or used as slaves. Characters of Lawful alignment may be asked to join the holy war. Dervishes are highly suspicious of those who refuse (without good reason).



## Djinni (Lesser)

Highly magical, free-willed, intelligent beings from the elemental plane of air. Tall humanoids wreathed in clouds.

**AC** 5 [14], **HD** 7+1\* (32hp), **Att** 1 × fists (2d8), magic, **THAC0** 12 [+7], **MV** 90' (30') / 240' (80') flying, **SV** D4 W5 P6 B5 S8 (14), **ML** 12, **AL** Neutral, **XP** 850, **NA** 1 (1), **TT** None

- **Mundane damage immunity:** Can only be harmed by magical attacks.
- **Magic powers:** Each can be used three times per day:

a. **Whirlwind form:** 5 rounds to transform (or change back). 70' tall, 20' wide at top, 10' wide at base. Moves at 120' (40'). 2d6 damage to all in path. Creatures with less than 2HD swept aside (**save vs death**).

b. **Gaseous form**

c. **Invisibility**

d. **Illusion:** Visual and audial. No concentration required. Remains until touched or dispelled.

e. **Create food and drink:** For 12 humans and mounts for one day.

f. **Conjure metallic objects:** Up to 1,000 coins weight. Temporary: hardness determines duration (gold: 1 day; iron: 1 round).

g. **Conjure soft goods / wooden objects:** Up to 1,000 coins weight. Permanent.

- **Carrying capacity:** 6,000 coins without fatigue. Up to 12,000 coins for 3 turns walking / 1 turn flying. Must rest 1 turn afterwards.

- **If killed:** Returns to the plane of air.

## Doppelgänger

Intelligent, human-sized shape-shifters of wicked character and highly magical nature.

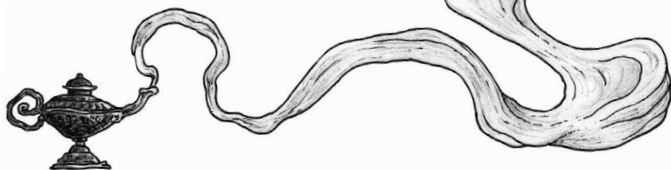
**AC** 5 [14], **HD** 4\* (18hp), **Att** 1 × bite (1d12), **THAC0** 16 [+3], **MV** 90' (30'), **SV** D6 W7 P8 B8 S10 (10), **ML** 10, **AL** Chaotic, **XP** 125, **NA** 1d6 (1d6), **TT** E

- **Shape stealing:** Can adopt the form of any human-like creature (7' tall or less) observed. Then proceed to attack the person mimicked.

- **Trickery:** Will attempt to kill a PC, take on their role, then attack the party by surprise (e.g. during a battle).

- **Reversion:** If killed, reverts to its original form.

- **Spell immunity:** Unaffected by *sleep* and *charm* spells.



## Dragon

A proud, ancient race of gigantic, carnivorous, winged reptiles. There are many subspecies of dragon, many of which are distinguished by the colour of their scales. All dragons are egg-layers and hoard treasure in their lairs, far from areas of human civilisation.

► **Behaviour:** Chaotic dragons usually try to eat humans, but may sometimes capture them. Neutral dragons may attack or ignore humans. Lawful dragons may aid parties worthy of the honour.

► **Pride:** Dragons are immensely proud creatures and will always listen to flattery.

► **Attack pattern:** A dragon always attacks first with its breath weapon, then either breathes again or makes melee attacks (equal chance of either).

► **Breath weapon:** Can be used up to three times per day. All caught in the area suffer damage equal to the dragon's current hit points (**save versus breath** for half). Shapes of breath weapon:

a. **Cloud:** 50' long, 40' wide, 20' high.

b. **Cone:** 2' wide at the mouth, 30' wide at far end.

c. **Line:** 5' wide along whole length.

► **Energy immunity:** Unharmed by their own breath weapon or lesser versions thereof. Automatically save versus similar attack forms. (For example, a red dragon is immune to flaming oil and suffers half damage from *fire ball* spells.)

► **Language and spells:** Some dragons are able to speak (their own tongue plus Common). The chance is listed by subspecies. Those that can speak can also cast randomly selected magic-user spells (the listed number and level of spells).

► **Sleeping:** The chance of a dragon being asleep when encountered on the ground is listed by subspecies. A sleeping dragon may be attacked for one round with a +2 bonus to hit. Dragons may sometimes pretend to be asleep!

► **Subduing:** Will surrender if reduced to 0hp by non-lethal attacks (see *Subduing* under **Other Combat Issues** in *Classic Fantasy: Adventures*), admitting that it has been defeated. (Subdual damage does not reduce the damage done by the breath weapon.) A subdued dragon will attempt to escape or attack its captors, if the opportunity presents itself or if given a suicidal command. A subdued dragon may be sold for up to 1,000gp per hp.

► **Age:** The following stats describe dragons of average size. Younger dragons may have up to 3 HD less and  $\frac{1}{4}$  or  $\frac{1}{2}$  as much treasure. Older dragons may have up to 3 HD more and twice as much treasure.

► **Lairs:** A dragon's treasure is always kept in its well-hidden lair and is seldom unguarded.

### Black Dragon

Dwell in swamps and marshes.

AC 2 [17], HD 7\*\* (31hp), Att [2 × claw (1d4 + 1), 1 × bite (2d10)] or breath, THACO 13 [+6], MV 90' (30') / 240' (80') flying, SV D8 W9 P10 B10 S12 (7), ML 8, AL Chaotic, XP 1,250, NA 1d4 (1d4), TT H

► **Breath weapon:** 60' long line of acid.

► **Language and spells:** 20%; 4 × 1st level.

► **Sleeping:** 40%.

### Blue Dragon

Favour open plains and deserts.

AC 0 [19], HD 9\*\* (40hp), Att [2 × claw (1d6 + 1), 1 × bite (3d10)] or breath, THACO 12 [+7], MV 90' (30') / 240' (80') flying, SV D8 W9 P10 B10 S12 (9), ML 9, AL Neutral, XP 2,300, NA 1d4 (1d4), TT H

► **Breath weapon:** 100' long line of lightning.

► **Language and spells:** 40%; 4 × 1st level, 4 × 2nd level.

► **Sleeping:** 20%.

## Gold Dragon

May be encountered in any terrain, often in the guise of a person or animal.

**AC** -2 [21], **HD** 11\*\* (49hp), **Att** [2 × claw (2d4), 1 × bite (6d6)] or breath, **THACO** 11 [+8], **MV** 90' (30') / 240' (80') flying, **SV** D6 W7 P8 B8 S10 (11), **ML** 10, **AL** Lawful, **XP** 2,700, **NA** 1d4 (1d4), **TT** H

- **Breath weapon:** 90' long cone of fire or cloud of chlorine gas.
- **Language and spells:** 100%; 4 × 1st level, 4 × 2nd level, 4 × 3rd level.
- **Sleeping:** 5%.
- **Shape changing:** May take on the form of a person or animal.

## Green Dragon

Lair in jungles and forests.

**AC** 1 [18], **HD** 8\*\* (36hp), **Att** [2 × claw (1d6), 1 × bite (3d8)] or breath, **THACO** 12 [+7], **MV** 90' (30') / 240' (80') flying, **SV** D8 W9 P10 B10 S12 (8), **ML** 9, **AL** Chaotic, **XP** 1,750, **NA** 1d4 (1d4), **TT** H

- **Breath weapon:** Cloud of chlorine gas.
- **Language and spells:** 30%; 3 × 1st level, 3 × 2nd level.
- **Sleeping:** 30%.

## Red Dragon

Dwell in hills and mountains.

**AC** -1 [20], **HD** 10\*\* (45hp), **Att** [2 × claw (1d8), 1 × bite (4d8)] or breath, **THACO** 11 [+8], **MV** 90' (30') / 240' (80') flying, **SV** D6 W7 P8 B8 S10 (10), **ML** 10, **AL** Chaotic, **XP** 2,300, **NA** 1d4 (1d4), **TT** H

- **Breath weapon:** 90' long cone of fire.
- **Language and spells:** 50%; 3 × 1st level, 3 × 2nd level, 3 × 3rd level.
- **Sleeping:** 10%.



## Sea Dragon

Intelligent, aquatic dragons with green scales, fin-like wings, and a yellowish crest. Dwell in the depths of the ocean, inhabiting caverns or shipwrecks. Sometimes attack vessels to steal their treasure and eat the crew.

**AC** 1 [18], **HD** 8\*\* (36hp), **Att** 1 × bite (3d8) or breath, **THACO** 12 [+7], **MV** 180' (60') swimming / 180' (60') gliding, **SV** D8 W9 P10 B10 S12 (8), **ML** 9, **AL** Neutral, **XP** 1,750, **NA** 0 (1d4), **TT** H

- **Breath weapon:** Poison spittle, 100' range, 20' diameter. **Save versus breath** or die. (Poison is harmless after 1 round.)
- **Language and spells:** 20%; 3 × 1st level, 3 × 2nd level.
- **Sleeping:** 30%.

- **Gliding:** Leap out of the water and glide for up to 6 rounds.

## White Dragon

Found in cold regions.

**AC** 3 [16], **HD** 6\*\* (27hp), **Att** [2 × claw (1d4), 1 × bite (2d8)] or breath, **THACO** 14 [+5], **MV** 90' (30') / 240' (80') flying, **SV** D10 W11 P12 B13 S14 (6), **ML** 8, **AL** Neutral, **XP** 725, **NA** 1d4 (1d4), **TT** H

- **Breath weapon:** 80' long cone of cold.
- **Language and spells:** 10%; 3 × 1st level.
- **Sleeping:** 50%.





## Dragon Turtle

Gargantuan sea monsters with the body and hard shell of a turtle and the head, tail, and legs of a dragon. Lurk in huge caves in the depths of the ocean, only rarely coming to the surface.

**AC** -2 [21], **HD** 30\* (135hp), **Att** [2 × claw (1d8), 1 × bite (1d6 × 10)] or breath, **THACO** 5 [+14], **MV** 30' (10') / 90' (30') swimming, **SV** D4 W5 P6 B5 S8 (15), **ML** 10, **AL** Chaotic, **XP** 9,000, **NA** 0 (1), **TT** H

- **Breath weapon:** 90' long, 30' wide cloud of steam. Can be used up to three times per day. All caught in the area suffer damage equal to the dragon turtle's current hit points (**save vs breath** for half).
- **Mistaken for island:** When floating, can be mistaken for a small island.
- **Attack ships:** Sometimes try to destroy ships and eat the crew by surfacing below.
- **Treasure:** From sunken ships.

## Driver Ant

Giant (6' long), omnivorous, black ants.

**AC** 3 [16], **HD** 4\* (18hp), **Att** 1 × bite (2d6), **THACO** 16 [+3], **MV** 180' (60'), **SV** D12 W13 P14 B15 S16 (2), **ML** 7 (12 in melee), **AL** Neutral, **XP** 125, **NA** 2d4 (4d6), **TT** U (see below)

- **Rapacious:** Consume everything in their path, when hungry.
- **Morale:** Attack relentlessly, once they are engaged in melee (morale 12). Will even pursue through flames.
- **Lair treasure:** 30% chance of 1d10 × 1,000gp worth of gold nuggets, mined by the ants.



## Dryad

Shy, peaceful, yet wary tree spirits that can manifest as beautiful female humanoids. Live in deep forests.

**AC** 5 [14], **HD** 2\* (9hp), **Att** 1 × magic (charm), **THAC0** 18 [+1], **MV** 120' (40'), **SV** D10 W11 P12 B13 S14 (4), **ML** 6, **AL** Neutral, **XP** 25, **NA** 0 (1d6), **TT** D

- ▶ **Bound with tree:** Spiritually connected with a single tree. Dryad dies if the tree dies, or if separated by more than 240'.
- ▶ **Meld with tree:** Can disappear by joining with her tree.
- ▶ **Defensive:** Distrustful of strangers. Attempt to charm anyone who approaches or follows.
- ▶ **Charm:** Victim compelled to approach the tree, vanishes inside it (**save versus spells with a -2 penalty**). If not immediately rescued, the victim is lost forever.
- ▶ **Treasure:** Hidden in roots of the tree.

## Dwarf

Short, stocky, bearded demihumans who dwell in mountains and subterranean realms.

**AC** 4 [15], **HD** 1 (4hp), **Att** 1 × weapon (1d8 or by weapon), **THAC0** 19 [0], **MV** 60' (20'), **SV** D8 W9 P10 B13 S12 (Dwarf 1), **ML** 8 (10 with leader), **AL** Lawful or Neutral, **XP** 10, **NA** 1d6 (5d8), **TT** G

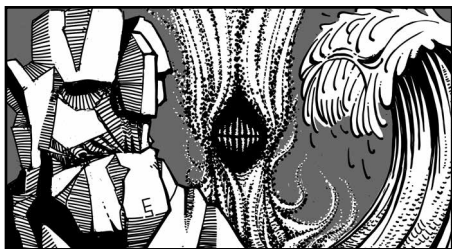
- ▶ **Leader:** A leader of level 1d6 + 2 is present for every 20 dwarves. The leader may have magic items: 5% chance per level for each magic item table (except Scrolls and Wands/Staves/Rods—**Magic Items in Classic Fantasy: Treasures**).
- ▶ **Hate goblins:** Normally attack on sight.

## Efreeti (Lesser)

Highly magical, free-willed, intelligent beings from the elemental plane of fire. Manifest as giant men with demonic faces and an aura of heat and smoke. Solidify out of billowing smoke clouds.

**AC** 3 [16], **HD** 10\* (45hp), **Att** 1 × fists (2d8), magic, **THAC0** 11 [+8], **MV** 90' (30') / 240' (80') flying, **SV** D4 W5 P6 B5 S8 (15), **ML** 12, **AL** Chaotic, **XP** 1,600, **NA** 1 (1), **TT** None

- ▶ **Mundane damage immunity:** Can only be harmed by magical attacks.
- ▶ **Magic powers:** Each can be used three times per day:
  - a. **Pillar of flame:** Transform into a column of fire for up to 3 rounds. Flammable items within 5' are ignited. Attacks do additional 1d8 damage (3d8 total).
  - b. **Invisibility**
  - c. **Illusion:** Visual and audial. No concentration required. Remains until touched or dispelled.
  - d. **Create wall of fire**
  - e. **Create food and drink:** For 12 humans and mounts for one day.
  - f. **Conjure metallic objects:** Up to 1,000 coins weight. Temporary: hardness determines duration (gold: 1 day; iron: 1 round).
  - g. **Conjure soft goods / wooden objects:** Up to 1,000 coins weight. Permanent.
- ▶ **Carrying capacity:** Up to 10,000 coins (flying).
- ▶ **Hate djinn:** Attack on sight.
- ▶ **Bound servitor:** Efreet summoning spells can be researched by high-level magic-users. Can be bound to servitude for 101 days. Efreet are treacherous and will follow commands to the letter while subverting the intent.



## Elemental

Beings formed of pure, elemental matter (air, earth, fire, or water) that can be summoned from their plane of origin to serve a magic-user.

- **Mundane damage immunity:** Can only be harmed by magical attacks.
- **Power level:** There are three power levels of elemental. Each is typically summoned by different means:
- **Lesser:** AC 2 [17], HD 8\*, Att 1 × blow (1d8), SV D8 W9 P10 B10 S12 (8). (Summoned by magic staff.)
- **Intermediate:** AC 0 [19], HD 12\*, Att 1 × blow (2d8), SV D6 W7 P8 B8 S10 (12). (Summoned by magic device.)
- **Greater:** AC -2 [21], HD 16\*, Att 1 × blow (3d8), SV D2 W3 P4 B3 S6 (16). (Summoned by spell.)

## Air Elemental

Huge vortexes of whirling air.

AC 2 [17] / 0 [19] / -2 [21], HD 8/12/16\* (36/54/72hp), Att 1 × blow (1d8/2d8/3d8), THAC0 12 [+7] / 10 [+9] / 8 [+11], MV 360' (120') flying, SV See main entry (8/12/16), ML 10, AL Neutral, XP 1,200/1,900/2,300, NA 1 (1), TT None

- **Size:** 16' tall, 4' across / 24' tall, 6' across / 32' tall, 8' across.
- **Whirlwind:** Creatures with less than 2HD swept aside (**save versus death**).
- **Harm flying creatures:** Inflict extra 1d8 damage.

## Earth Elemental

Huge, humanoid figures of earth or stone.

AC 2 [17] / 0 [19] / -2 [21], HD 8/12/16\* (36/54/72hp), Att 1 × blow (1d8/2d8/3d8), THAC0 12 [+7] / 10 [+9] / 8 [+11], MV 60' (20'), SV See main entry (8/12/16), ML 10, AL Neutral, XP 1,200/1,900/2,300, NA 1 (1), TT None

- **Size:** 8' tall / 12' tall / 16' tall.
- **Blocked by water:** Cannot cross a channel wider than own height.
- **Harm creatures on the ground:** Inflict extra 1d8 damage.

## Fire Elemental

Whirling columns of fire.

AC 2 [17] / 0 [19] / -2 [21], HD 8/12/16\* (36/54/72hp), Att 1 × blow (1d8/2d8/3d8), THAC0 12 [+7] / 10 [+9] / 8 [+11], MV 120' (40'), SV See main entry (8/12/16), ML 10, AL Neutral, XP 1,200/1,900/2,300, NA 1 (1), TT None

- **Size:** 8' tall, 8' across / 12' tall, 12' across / 16' tall, 16' across.
- **Blocked by water:** Cannot cross a channel wider than own diameter.
- **Harm cold-based creatures:** Inflict extra 1d8 damage.

## Water Elemental

Huge waves of water.

AC 2 [17] / 0 [19] / -2 [21], HD 8/12/16\* (36/54/72hp), Att 1 × blow (1d8/2d8/3d8), THAC0 12 [+7] / 10 [+9] / 8 [+11], MV 60' (20') / 180' (60') swimming, SV See main entry (8/12/16), ML 10, AL Neutral, XP 1,200/1,900/2,300, NA 1 (1), TT None

- **Size:** 4' tall, 16' across / 6' tall, 24' across / 8' tall, 32' across.
- **Water-bound:** Must remain within 60' of water.
- **Harm creatures in water:** Inflict extra 1d8 damage.



## Elephant

Massive, tusked animals that dwell near subtropical forests. Wandering individuals or whole herds may be encountered.

**AC** 5 [14], **HD** 9 (40hp), **Att** 2 × tusk (2d4) or 1 × trample (4d8), **THAC0** 12 [+7], **MV** 120' (40'), **SV** D10 W11 P12 B13 S14 (5), **ML** 8, **AL** Neutral, **XP** 900, **NA** 0 (1d20), **TT** Tusks

- **Charge:** In first round of combat, when not in melee. Requires a clear run of at least 20 yards. Tusks inflict double damage.
- **Trample:** 3-in-4 chance of trampling each round. +4 to hit human-sized or smaller creatures.
- **Ivory:** Each tusk is worth 1d6 × 100gp.

## Elf

Slender, fey demihumans with pointed ears. Live in harmony with nature, in beautiful natural settings.

**AC** 5 [14], **HD** 1+1\* (5hp), **Att** 1 × weapon (1d8 or by weapon), **THAC0** 18 [+1], **MV** 120' (40'), **SV** D12 W13 P13 B15 S15 (Elf 1), **ML** 8 (10 with leader), **AL** Neutral, **XP** 19, **NA** 1d4 (2d12), **TT** E

- **Spells:** Each individual has one random 1st level arcane spell.
- **Leader:** Groups of 15+ are led by an elf of level 1d6 + 1. The leader may have magical items: 5% chance per level for each magic item table (see *Magic Items* in *Classic Fantasy: Treasures*).

## Ferret, Giant

3' long ferrets that hunt giant rats in their burrows. Sometimes kept by humans for this aptitude.

**AC** 5 [14], **HD** 1+1 (5hp), **Att** 1 × bite (1d8), **THAC0** 18 [+1], **MV** 150' (50'), **SV** D12 W13 P14 B15 S16 (1), **ML** 8, **AL** Neutral, **XP** 15, **NA** 1d8 (1d12), **TT** None

- **Volatile:** Unpredictable temper; may turn on trainers or other people.

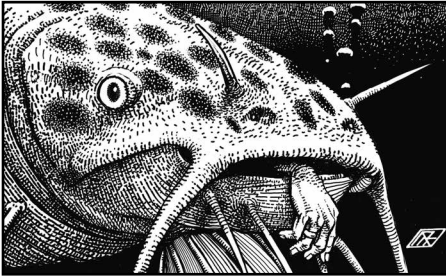


## Fish, Giant

### Giant Bass

Shy; only attack when seeing a bite-size (halfling-size or smaller) morsel close by.

**AC** 7 [12], **HD** 2 (9hp), **Att** 1 × bite (1d6), **THAC0** 18 [+1], **MV** 120' (40'), **SV** D12 W13 P14 B15 S16 (1), **ML** 8, **AL** Neutral, **XP** 20, **NA** 0 (2d4), **TT** None



### Giant Catfish

15' long, pale white. Four feelers beside the mouth. Lurk in the mud at the bottom of rivers and lakes. Will attack creatures on the bottom or swimming above.

**AC** 4 [15], **HD** 8+3 (39hp), **Att** 1 × bite (2d8), 4 × feeler (1d4), **THAC0** 12 [+7], **MV** 90' (30'), **SV** D10 W11 P12 B13 S14 (4), **ML** 8, **AL** Neutral, **XP** 650, **NA** 0 (1d2), **TT** None

### Giant Piranha

5' long piranhas with black and green scales. Live in rivers (occasionally lakes) and attack anything in the water.

**AC** 6 [13], **HD** 3+3 (16hp), **Att** 1 × bite (1d8), **THAC0** 16 [+3], **MV** 150' (50'), **SV** D12 W13 P14 B15 S16 (2), **ML** 7, **AL** Neutral, **XP** 50, **NA** 0 (2d4), **TT** None

- **Surround opponents:** A target can be attacked by up to 8 giant piranhas.
- **Morale:** When blood is in the water, do not check morale.

### Giant Rockfish

Spiny fish with lumpy, rock-like skin. Live in saltwater shallows. Normally passive, but highly aggressive if disturbed.

**AC** 7 [12], **HD** 5+5\* (27hp), **Att** 4 × spine (1d4 + poison), **THAC0** 14 [+5], **MV** 180' (60'), **SV** D12 W13 P14 B15 S16 (3), **ML** 8, **AL** Neutral, **XP** 400, **NA** 0 (2d4), **TT** None

- **Camouflage:** 70% chance of being mistaken for a rock or coral formation.
- **Grasping:** If mistaken for a rock and grasped, all 4 spines automatically hit.
- **Poison:** Causes death (save vs poison).

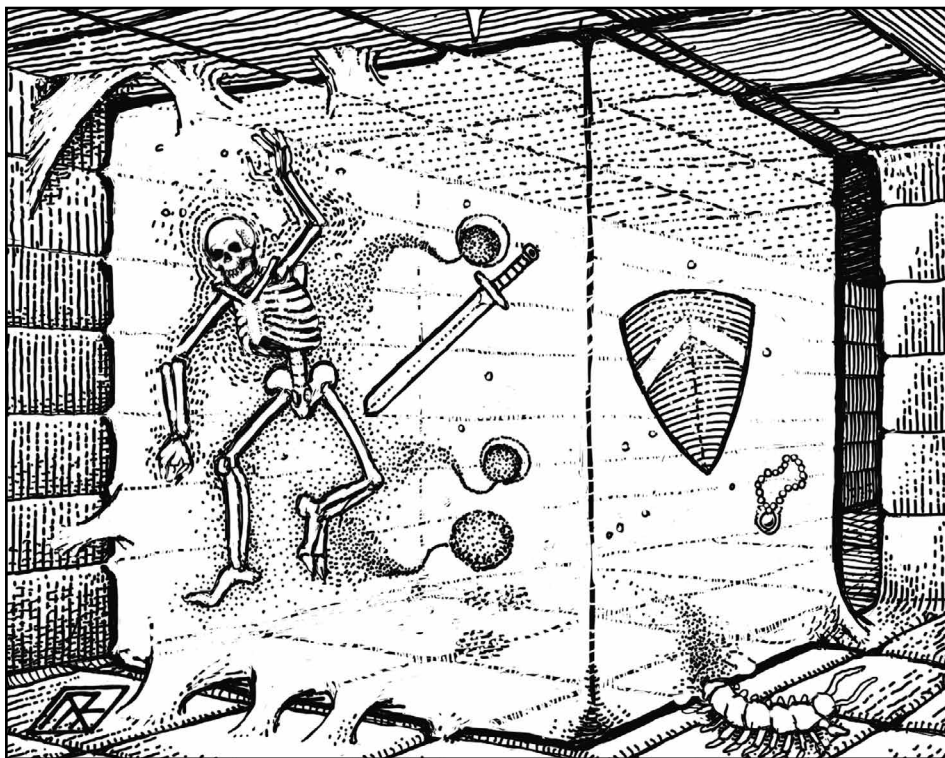
### Giant Sturgeon

Huge (nearly 30' long), aggressive fish with armour plating.

**AC** 0 [19], **HD** 10+2\* (47hp), **Att** 1 × bite (2d10), **THAC0** 11 [+8], **MV** 180' (60'), **SV** D10 W11 P12 B13 S14 (5), **ML** 9, **AL** Neutral, **XP** 1,600, **NA** 0 (1), **TT** None

- **Swallow whole:** On a natural 18, 19, or 20 attack roll. Inside the fish's belly: suffer 2d6 damage per round (until the fish dies); **save versus death** or be paralysed; may attack with sharp weapons at -4 to hit (inside belly has **AC** 7 [12]); body digested in 6 turns after death.





## Gargoyle

Magical monsters that look like hideous, horned, winged statues. Semi-intelligent and possessed of a great cunning.

**AC** 5 [14], **HD** 4 (18hp), **Att** 2 × claw (1d3), 1 × bite (1d6), 1 × horn (1d4), **THAC0** 16 [+3], **MV** 90' (30') / 150' (50') flying, **SV** D8 W9 P10 B10 S12 (8), **ML** 11, **AL** Chaotic, **XP** 75, **NA** 1d6 (2d4), **TT** C

- ▶ **Blend in with stone:** May be overlooked or mistaken for inanimate statues.
- ▶ **Guardians:** Almost always attack when approached.
- ▶ **Mundane damage immunity:** Can only be harmed by magical attacks.
- ▶ **Spell immunity:** Unaffected by *sleep* or *charm* spells.

## Gelatinous Cube

10' cubes of transparent jelly. Move through dungeons, absorbing debris and living creatures they come across.

**AC** 8 [11], **HD** 4\* (18hp), **Att** 1 × touch (2d4 + paralysis), **THAC0** 16 [+3], **MV** 60' (20'), **SV** D12 W13 P14 B15 S16 (2), **ML** 12, **AL** Neutral, **XP** 125, **NA** 1 (0), **TT** V

- ▶ **Surprise:** On a roll of 1–4, due to near-invisibility.
- ▶ **Paralysis:** For 2d4 turns (**save versus paralysis**).
- ▶ **Energy immunity:** Unharmd by cold or lightning.
- ▶ **Embedded items:** Indigestible items (e.g. gems, coins) are carried around inside the cube.

## Ghoul

Grotesque, animalistic, undead humans that crave the flesh of the living.

**AC** 6 [13], **HD** 2\* (9hp), **Att** 2 × claw (1d3 + paralysis), 1 × bite (1d3 + paralysis), **THAC0** 18 [+1], **MV** 90' (30'), **SV** D12 W13 P14 B15 S16 (2), **ML** 9, **AL** Chaotic, **XP** 25, **NA** 1d6 (2d8), **TT** B

- **Paralysis:** For 2d4 turns (**save versus paralysis**). Elves and creatures larger than ogres are unaffected. After paralyzing a target, ghouls will attack others.
- **Undead:** Make no noise, until they attack. Immune to effects that affect living creatures (e.g. poison). Immune to mind-affecting or mind-reading spells (e.g. *charm*, *hold*, *sleep*).

## Giant

### Cloud Giant

Aggressive, 20' tall humanoids with skin and hair ranging from grey to white. Dress in pale robes.

**AC** 4 [15], **HD** 12+3 (57hp), **Att** 1 × weapon (6d6) or 1 × boulder (3d6), **THAC0** 10 [+9], **MV** 120' (40'), **SV** D6 W7 P8 B8 S10 (12), **ML** 10, **AL** Neutral, **XP** 1,100, **NA** 1d2 (1d3), **TT** E + 5,000gp

- **Keen sight and smell:** Only surprised on a 1.
- **Boulder throwing:** Up to 200'.
- **Castle:** Built into mountain-sides or floating on cloud banks.
- **Guardians:** 3d6 giant hawks (*p37*) or (only in mountains) 6d6 dire wolves (*p72*).
- **Hate intruders:** May block mountain passes to ensure isolation.



### Fire Giant

16' tall humanoids with black hair and red skin. Dress in armour fashioned from golden metals (brass, bronze, copper). Dwell in places of extreme heat (e.g. near volcanoes).

**AC** 4 [15], **HD** 11+2 (51hp), **Att** 1 × weapon (5d6) or 1 × boulder (3d6), **THAC0** 10 [+9], **MV** 120' (40'), **SV** D6 W7 P8 B8 S10 (11), **ML** 9, **AL** Chaotic, **XP** 1,100, **NA** 1d2 (1d3), **TT** E + 5,000gp

- **Boulder throwing:** Up to 200'.
- **Fire immunity:** Unharmed by fire.
- **Castle:** Black, low-walled. Made of baked mud and raw iron.
- **Guardians:** 20% chance of 1d3 hydras (*p40*), 3d6 hellhounds (*p38*) otherwise.

### Frost Giant

18' tall humanoids with pale skin and pale, yellow or blue hair. Dress in furs or iron armour. Males have long beards.

**AC** 4 [15], **HD** 10+1 (46hp), **Att** 1 × weapon (4d6) or 1 × boulder (3d6), **THAC0** 11 [+8], **MV** 120' (40'), **SV** D6 W7 P8 B8 S10 (10), **ML** 9, **AL** Chaotic, **XP** 900, **NA** 1d2 (1d4), **TT** E + 5,000gp

- **Boulder throwing:** Up to 200'.
- **Cold immunity:** Unharmed by cold-based attacks.
- **Castle:** High upon snowy mountains.
- **Guardians:** 20% chance of 3d6 polar bears (*p8*), 6d6 wolves (*p72*) otherwise.

## Hill Giant

Hairy, brutish, 12' tall humanoids of low intelligence. Dwell in foothills. Known to attack human settlements to steal food.

**AC** 4 [15], **HD** 8 (36hp), **Att** 1 × weapon (2d8), **THAC0** 12 [+7], **MV** 120' (40'), **SV** D8 W9 P10 B10 S12 (8), **ML** 8, **AL** Chaotic, **XP** 650, **NA** 1d4 (2d4), **TT** E + 5,000gp

► **Weapons:** Wield giant clubs and spears.

## Stone Giant

14' tall humanoids with stone-like, grey skin. Dwell in natural caverns or primitive huts built of stone.

**AC** 4 [15], **HD** 9 (40hp), **Att** 1 × weapon (3d6) or 1 × boulder (3d6), **THAC0** 12 [+7], **MV** 120' (40'), **SV** D8 W9 P10 B10 S12 (9), **ML** 9, **AL** Neutral, **XP** 900, **NA** 1d2 (1d6), **TT** E + 5,000gp

► **Weapons:** Stone clubs made from huge stalactites.

► **Boulder throwing:** Up to 300'.

► **Guardians:** 50% chance of 1d4 cave bears (*p*8).

## Storm Giant

22' tall humanoids with bronze-hued skin and garish hair (red or yellow).

**AC** 2 [17], **HD** 15 (67hp), **Att** 1 × weapon (8d6), 1 × lightning bolt, **THAC0** 9 [+10], **MV** 150' (50'), **SV** D4 W5 P6 B5 S8 (15), **ML** 10, **AL** Lawful, **XP** 1350, **NA** 1 (1d3), **TT** E + 5,000gp

► **Summon storm:** Takes 1 turn.

► **Lightning bolts:** In a storm, may throw lightning every 5 rounds: 60' long, 5' wide; inflicts damage equal to the giant's current hit point total (**save vs spells** for half damage); bounce off of hard surfaces in path.

► **Lightning immunity:** Unharmed by lightning. Enjoy basking in storms.

► **Castle:** High among mountain peaks, atop banks of clouds, or in deep waters.

► **Guardians:** 2d4 griffons (*p*36). Underwater: 3d6 giant crabs (*p*16).

## Gnoll

Lazy, humanoid hyenas of low intelligence that live by intimidation and theft. Legends say that gnolls were magically created by a wizard who crossbred gnomes and trolls.

**AC** 5 [14], **HD** 2 (9hp), **Att** 1 × weapon (2d4 or by weapon + 1), **THAC0** 18 [+1], **MV** 90' (30'), **SV** D12 W13 P14 B15 S16 (2), **ML** 8, **AL** Chaotic, **XP** 20 (leader: 35), **NA** 1d6 (3d6), **TT** D

► **Leader:** Groups of 20+ are led by a gnoll with 3HD (16hp).

## Gnome

Short demihumans with long noses and beards. Smaller cousins of dwarves, whom they get along with. Prefer to live in burrows in non-mountainous country.

**AC** 5 [14], **HD** 1 (4hp), **Att** 1 × weapon (1d6 or by weapon), **THAC0** 19 [0], **MV** 60' (20'), **SV** D8 W9 P10 B13 S12 (Dwarf 1), **ML** 8 (10 in sight of leader or chieftain), **AL** Lawful or Neutral, **XP** 10, (leader: 20, bodyguard: 35, chieftain: 75), **NA** 1d8 (5d8), **TT** C

► **Weapons:** Typically use war hammers and crossbows.

► **Infravision:** 90'.

► **Leader:** A 2HD (11hp) leader is present for every 20 gnomes.

► **Clan chieftain and bodyguards:** A 4HD (18hp) chieftain and 1d6 3HD (1d4 + 9hp) bodyguards live in the gnome lair. The chieftain gains a +1 bonus to damage.

► **Hate kobolds:** Normally attack on sight.

► **Mines and machines:** Love machinery, mining, gold, and gems. May make foolish decisions to obtain precious items. War with goblins and kobolds over precious metals.



## Goblin

Small, grotesque humanoids with pallid, earth-coloured skin and glowing, red eyes. Dwell underground.

**AC** 6 [13], **HD** 1–1 (3hp), **Att** 1 × weapon (1d6 or by weapon), **THAC0** 19 [0], **MV** 60' (20'), **SV** D14 W15 P16 B17 S18 (NH), **ML** 7 (9 with king), **AL** Chaotic, **XP** 5 (bodyguard: 20, king: 35), **NA** 2d4 (6d10), **TT** R (C)

- ▶ **Infravision:** 90'.
- ▶ **Hate the sun:** –1 to hit in full daylight.
- ▶ **Wolf riders:** 20% of goblin groups encountered have wolf riders: ¼ of the group mounted on dire wolves.
- ▶ **Hate dwarves:** Attack on sight.
- ▶ **Goblin king and bodyguards:** A 3HD (15hp) king and 2d6 2HD (2d6hp) bodyguards live in the goblin lair. They do not suffer attack penalties in daylight. The king gains a +1 bonus to damage.
- ▶ **Hoard:** Only have treasure type C when encountered in the wilderness or in their lair.

## Golem

Artificial beings constructed from different materials by mighty clerics or wizards.

- ▶ **Mundane damage immunity:** Can only be harmed by magical attacks.
- ▶ **Immunity:** Unharmed by gas; unaffected by *charm*, *hold*, and *sleep* spells.
- ▶ **Other materials:** Golems formed of other materials are also possible.
- ▶ **Constructing:** A very complex, expensive, and time-consuming process.

### Amber Golem

Constructed in the form of giant cats (e.g. lions or tigers).

**AC** 6 [13], **HD** 10\*\* (45hp), **Att** 2 × claw (2d6), 1 × bite (2d10), **THAC0** 11 [+8], **MV** 180' (60'), **SV** D10 W11 P12 B13 S14 (5), **ML** 12, **AL** Neutral, **XP** 2,300, **NA** 1 (1), **TT** None

- ▶ **Mundane damage immunity; Immunity:** See main entry.
- ▶ **Tracking:** Without error.
- ▶ **Detect invisible creatures:** Within 60'.

### Bone Golem

6' tall constructs of human bone, crafted into a humanoid shape. Have four arms, attached at different places on the torso.

**AC** 2 [17], **HD** 8 (36hp), **Att** 2 or 4 × weapon (1d6 or by weapon), **THAC0** 12 [+7], **MV** 120' (40'), **SV** D10 W11 P12 B13 S14 (4), **ML** 12, **AL** Neutral, **XP** 650, **NA** 1 (1), **TT** None

- ▶ **Mundane damage immunity; Immunity:** See main entry.
- ▶ **Weapons:** 4×1-handed or 2×2-handed.
- ▶ **Attack multiple opponents:** Up to 2 per round.
- ▶ **Energy immunity:** Unharmed by fire, cold, and electricity.



## Bronze Golem

Bronze constructs that resemble fire giants, possessing a great internal heat.

**AC** 0 [19], **HD** 20\*\* (90hp), **Att** 1 × fist (3d10 + 1d10 heat), **THAC0** 6 [+13], **MV** 240' (80'), **SV** D6 W7 P8 B8 S10 (10), **ML** 12, **AL** Neutral, **XP** 4,300, **NA** 1 (1), **TT** None

► **Mundane damage immunity; Immunity:** See main entry.

► **Flaming blood:** If damaged by an edged weapon, emits a spurt of liquid fire: attacker suffers 2d6 damage (**save versus death** to avoid).

► **Fire immunity:** Unharmed by fire.

## Wood Golem

3' tall, roughly constructed, humanoid figures of wood.

**AC** 7 [12], **HD** 2+2 (11hp), **Att** 1 × fist (1d8), **THAC0** 17 [+2], **MV** 120' (40'), **SV** D12 W13 P14 B15 S16 (1), **ML** 12, **AL** Neutral, **XP** 25, **NA** 1 (1), **TT** None

► **Mundane damage immunity; Immunity:** See main entry.

► **Initiative:** -1 penalty due to stiff movement.

► **Flammable:** -2 to saves against fire attacks; suffers one extra point of damage per die.

## Gorgon

Magical monsters that resemble iron-scaled bulls. Dwell in plains or foothills.

**AC** 2 [17], **HD** 8\* (36hp), **Att** 1 × gore (2d6) or 1 × breath (petrify), **THAC0** 12 [+7], **MV** 120' (40'), **SV** D8 W9 P10 B10 S12 (8), **ML** 8, **AL** Chaotic, **XP** 1,200, **NA** 1d2 (1d4), **TT** E

► **Charge:** When not in melee. Requires a clear run of at least 20 yards. Gore inflicts double damage.

► **Petrifying breath:** Cloud 60' long, 10' wide. All in the cloud are turned to stone (**save versus petrify** to avoid). Unharmed by own breath.









## Green Slime

Dripping, green slime that clings to walls and ceilings.

**AC** No hit roll required, **HD** 2\* (9hp), **Att** 1 × touch (consume flesh), **THAC0** 18 [+1], **MV** 3' (1'), **SV** D12 W13 P14 B15 S16 (1), **ML** 12, **AL** Neutral, **XP** 25, **NA** 1 (0), **TT** None

- **Surprise:** Drops down on surprised characters from above.
- **Acid:** When in contact with a victim, sticks on and exudes acid. The acid destroys wood or metal (including armour) in 6 rounds, but cannot affect stone.
- **Consume flesh:** Once in contact with flesh for 6 rounds, the victim is turned into green slime in a further 1d4 rounds.
- **Removing:** Once stuck on a victim, can only be removed by fire. This inflicts half damage to the victim and half to the slime.
- **Immunity:** Unharmed by all attacks except cold or fire.



## Grey Ooze

Slimy horrors that lurk on stone surfaces or among boulders.

**AC** 8 [11], **HD** 3\* (13hp), **Att** 1 × touch (2d8), **THAC0** 17 [+2], **MV** 10' (3'), **SV** D12 W13 P14 B15 S16 (2), **ML** 12, **AL** Neutral, **XP** 50, **NA** 1 (1), **TT** None

- **Blend in with stone:** Difficult to tell apart from wet stone.
- **Acid:** After a successful attack, sticks to the victim and exudes acid. The acid destroys normal armour immediately and inflicts 2d8 damage per round. (Magic armour is dissolved in one turn.)
- **Energy immunity:** Unharmed by cold or fire.

## Griffon

Large, rapacious predators combining the features of an eagle (head, wings, front claws) and a lion. Prey on horses.

**AC** 5 [14], **HD** 7 (31hp), **Att** 2 × claw (1d4), 1 × bite (2d8), **THAC0** 13 [+6], **MV** 120' (40') / 360' (120') flying, **SV** D10 W11 P12 B13 S14 (4), **ML** 8, **AL** Neutral, **XP** 450, **NA** 0 (2d8), **TT** E

- **Attack horses:** Within 120', unless a morale check is passed.
- **Defend nest:** Attack if it is approached.
- **Taming:** Captured young can be trained as loyal mounts. Their fierce nature cannot be trained out: they still instinctively attack horses.

## Halfling

Little, furry-footed demihumans who dwell in small villages (30–300 occupants).

**AC** 7 [12], **HD** 1–1 (3hp), **Att** 1 × weapon (1d6 or by weapon), **THAC0** 19 [0], **MV** 90' (30'), **SV** D8 W9 P10 B13 S12 (Halfling 1), **ML** 7, **AL** Lawful, **XP** 5 (guard: 20), **NA** 3d6 (5d8), **TT** V (B)

► **Leader and militia:** Villages are led by a halfling of level 1d6 + 1. A militia of 5d4 2HD guards is also present.

► **Hoard:** Only have treasure type B when encountered in the wilderness.

## Harpy

Hideous hags with the wings and lower bodies of giant eagles. Use their song to lure victims to their doom.

**AC** 7 [12], **HD** 3\* (13hp), **Att** 2 × claw (1d4), 1 × weapon (1d6 or by weapon), 1 × song (charm), **THAC0** 17 [+2], **MV** 60' (20') / 150' (50') flying, **SV** D12 W13 P14 B15 S16 (3), **ML** 7, **AL** Chaotic, **XP** 50, **NA** 1d6 (2d4), **TT** C

► **Charm:** Anyone who hears the song of a group of harpies must **save versus spells** or be charmed: move towards the harpies (resisting those who try to prevent it); defend the harpies; obey the harpies' commands (if understood); unable to cast spells or use magic items; unable to harm the harpies. A character who saves is unaffected for the rest of the encounter. Killing the harpies breaks the charm.

► **Magic resistance:** +2 bonus to all saves.

## Hawk

Birds of prey that drift on high currents of air and hunt prey on the ground.

► **Swoop:** Can dive onto victims visible from above. If the victim is surprised, the attack inflicts double damage. On an attack roll of 18 or more, the victim can be carried away (if of appropriate size).

► **Trainable:** Can be trained as guards or hunting animals.

## Giant Hawk

As big as a great dog. If hungry, may attack humans or similar-sized creatures.

**AC** 6 [13], **HD** 3+3 (16hp), **Att** 1 × talons or beak (1d6), **THAC0** 16 [+3], **MV** 450' (150') flying, **SV** D12 W13 P14 B15 S16 (2), **ML** 8, **AL** Neutral, **XP** 50, **NA** 0 (1d3), **TT** None

► **Swoop:** See main entry.

► **Carry prey:** Up to halfling-sized.

## Normal Hawk

Small birds of prey. Will only attack humans if they appear defenceless.

**AC** 8 [11], **HD** ½ (2hp), **Att** 1 × talons or beak (1d2), **THAC0** 19 [0], **MV** 480' (160') flying, **SV** D14 W15 P16 B17 S18 (NH), **ML** 7, **AL** Neutral, **XP** 5, **NA** 0 (1d6), **TT** None

► **Swoop:** See main entry.



## Hellhound

Monstrous, cunning, and very intelligent hounds, the size of a small pony. Breathe fire and love heat. Dwell in dungeons or near volcanoes.

---

**AC** 4 [15], **HD** 3 to 7\* (13/18/22/27/31hp), **Att** 1 × bite (1d6) or 1 × breath (1d6 per **HD**), **THAC0** By **HD** (17 [+2] to 13 [+6]), **MV** 120' (40'), **SV** By **HD**, **ML** 9, **AL** Chaotic, **XP** 50/125/300/500/850, **NA** 2d4 (2d4), **TT** C

---

► **Fire breath:** 2-in-6 chance per round of breathing fire. One target. **Save versus breath** for half damage.

► **Fire immunity:** Unharmed by non-magical fire.

► **Detect invisible:** 75% chance per round. 60' range.

► **Pets:** Sometimes found with other creatures with an affinity for fire.

## Herd Animal

Wild animals that live in large, grazing herds. The exact type depends on the terrain.

► **Stampede:** Herds of 20 or more can trample those in their path. 3-in-4 chance each round. +4 to hit human-sized or smaller creatures. 1d20 damage.

► **Males:** In groups of 3 or more, only 1-in-4 are males. These have 1d4 extra hit points and protect the herd.

► **Females and young:** Flee from danger. Females do not have a butt attack. Young have half normal hit points.

## Large Herd Animal

For example: elk or moose.

---

**AC** 7 [12], **HD** 4 (18hp), **Att** 1 × butt (1d8), **THAC0** 16 [+3], **MV** 240' (80'), **SV** D12 W13 P14 B15 S16 (2), **ML** 5, **AL** Neutral, **XP** 75, **NA** 0 (3d10), **TT** None

---

► **Stampede:** See main entry.



## Medium Herd Animal

For example: caribou or oxen.

---

**AC** 7 [12], **HD** 3 (13hp), **Att** 1 × butt (1d6), **THAC0** 17 [+2], **MV** 240' (80'), **SV** D12 W13 P14 B15 S16 (2), **ML** 5, **AL** Neutral, **XP** 35, **NA** 0 (3d10), **TT** None

---

► **Stampede:** See main entry.

## Small Herd Animal

For example: antelope, deer, goats.

---

**AC** 7 [12], **HD** 1 to 2 (4/9hp), **Att** 1 × butt (1d4), **THAC0** 19 [0]/18 [+1], **MV** 240' (80'), **SV** D12 W13 P14 B15 S16 (1), **ML** 5, **AL** Neutral, **XP** 10/20, **NA** 0 (3d10), **TT** None

---

► **Stampede:** See main entry.

## Hippogriff

Fantastic creatures combining the features of a giant eagle (head and forequarters) and a horse. Nest among craggy rocks.

---

**AC** 5 [14], **HD** 3+1 (14hp), **Att** 2 × claw (1d6), 1 × bite (1d10), **THAC0** 16 [+3], **MV** 180' (60') / 360' (120') flying, **SV** D12 W13 P14 B15 S16 (2), **ML** 8, **AL** Neutral, **XP** 50, **NA** 0 (2d8), **TT** None

---

► **Hate pegasi:** Will usually attack.

► **Mount:** Can carry a human-sized rider.

► **Taming:** Can be trained as mounts.

## Hobgoblin

Larger and nastier relatives of goblins. Dwell underground, but commonly seek prey above ground.

**AC** 6 [13], **HD** 1+1 (5hp), **Att** 1 × weapon (1d8 or by weapon), **THAC0** 18 [+1], **MV** 90' (30'), **SV** D12 W13 P14 B15 S16 (1), **ML** 8 (10 with king), **AL** Chaotic, **XP** 15 (bodyguard: 75, king: 175), **NA** 1d6 (4d6), **TT** D

► **Hobgoblin king and bodyguards:** A 5HD (22hp) king and 1d4 4HD (3d6hp) bodyguards live in the hobgoblin lair. The king gains a +2 bonus to damage rolls. A thoul (p64) may sometimes be found among the king's bodyguards.

## Horse

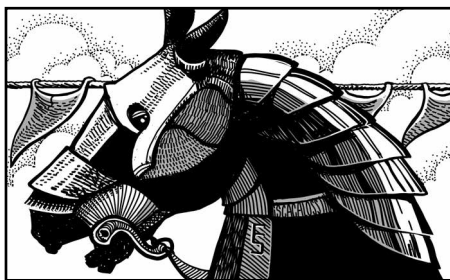
Herd animals that are often used for transportation. Many different domesticated breeds exist.

### Draft Horse

Bred for great strength and endurance. Used to pull vehicles and ploughs, or as beasts of burden.

**AC** 7 [12], **HD** 3 (13hp), **Att** None, **THAC0** 17 [+2], **MV** 90' (30'), **SV** D12 W13 P14 B15 S16 (2), **ML** 6, **AL** Neutral, **XP** 35, **NA** 0 (0), **TT** None

- **Non-combatant:** Will flee, if attacked.
- **Domestic:** Not encountered in the wild.
- **Carry loads:** Up to 4,500 coins unencumbered; up to 9,000 at half speed.



### Riding Horse

Lightly built horses adapted to run at high speed. Can survive purely on grass, wherever available.

**AC** 7 [12], **HD** 2 (9hp), **Att** 2 × hoof (1d4), **THAC0** 18 [+1], **MV** 240' (80'), **SV** D12 W13 P14 B15 S16 (1), **ML** 7, **AL** Neutral, **XP** 20, **NA** 0 (0), **TT** None

- **Domestic:** Not encountered in the wild.
- **Carry loads:** Up to 3,000 coins unencumbered; up to 6,000 at half speed.

### War Horse

Bred for strength and courage in battle. Adapted to short bursts of speed; not suited to long-distance riding.

**AC** 7 [12], **HD** 3 (13hp), **Att** 2 × hoof (1d6), **THAC0** 17 [+2], **MV** 120' (40'), **SV** D12 W13 P14 B15 S16 (2), **ML** 9, **AL** Neutral, **XP** 35, **NA** 0 (0), **TT** None

- **Charge:** When not in melee. Requires a clear run of at least 20 yards. Rider's lance inflicts double damage. Horse cannot attack when charging.
- **Melee:** When in melee, both rider and horse can attack.
- **Domestic:** Not encountered in the wild.
- **Carry loads:** Up to 4,000 coins unencumbered; up to 8,000 at half speed.

### Wild Horse

Lightly built horses adapted to run at high speed. Can survive purely on grass, wherever available.

**AC** 7 [12], **HD** 2 (9hp), **Att** 2 × hoof (1d4), **THAC0** 18 [+1], **MV** 240' (80'), **SV** D12 W13 P14 B15 S16 (1), **ML** 7, **AL** Neutral, **XP** 20, **NA** 0 (1d10 × 10), **TT** None

- **Stampede:** Herds of 20 or more can trample those in their path. 3-in-4 chance each round. +4 to hit human-sized or smaller creatures. 1d20 damage.
- **Taming:** Wild horses can be trained as mounts (riding horses).

## Hydra

Large, dragon-like creatures with multiple, serpentine heads. Sea hydras (adapted to water, with fins) also exist.

**AC** 5 [14], **HD** 5 to 12 (8hp per **HD**), **Att** 5 to 12 × bite (1d10), **THAC0** By **HD** (15 [+4] to 10 [+9]), **MV** 120' (40'), **SV** By **HD**, **ML** 9, **AL** Neutral, **XP** 175/275/450/650/900/900/1,100/1,100, **NA** 1 (1), **TT** B

- **Heads:** 1d8+4 heads; 1HD per head.
- **Disabling heads:** For every 8hp damage taken, one head is disabled (cannot attack).
- **Variants:** Special hydras sometimes found with venom, fiery breath, etc.

## Insect Swarm

Swarms of many tiny insects that may be encountered protecting their nest. May also be drawn to light or unusual smells.

**AC** 7 [12], **HD** 2 to 4 (9/13/18hp), **Att** 1 × swarm (2 or 4hp), **THAC0** 18 [+1]/17 [+2]/16 [+3], **MV** 30' (10') / 60' (20') flying, **SV** D14 W15 P16 B17 S18 (NH), **ML** 11, **AL** Neutral, **XP** 20/35/75, **NA** 1 (1d3), **TT** None

- **Type and locomotion:** A swarm may be composed of creepers (e.g. spiders, ants, centipedes) or flyers (e.g. bees, hornets). Some swarms are capable of both types of movement (e.g. beetles, locusts).
- **Size:** 10' × 30' area, typically.
- **Immunity:** Only harmed by fire, extreme cold, *sleep* spells (affect the whole swarm), smoke (drives off), or other attacks as the referee wishes.
- **Swarm attack:** Automatically damages characters within swarm area: 2hp if wearing armour, 4hp without.
- **Warding off:** Characters inside the swarm who defend themselves by brandishing a weapon (or similar) suffer half damage from the swarm. A brandished torch damages the swarm.



- **Escaping:** On exiting the swarm, characters continue to suffer half damage until 3 rounds are spent swatting the attached insects.
- **Diving into water:** Suffer damage for one round, then attached insects drown.
- **Pursuit:** An angry (i.e. damaged) swarm will pursue characters until they are out of sight or inaccessible.

## Invisible Stalker

Highly intelligent, magical creatures summoned from another plane of existence to perform tasks for powerful magic-users.

**AC** 3 [16], **HD** 8\* (36hp), **Att** 1 × blow (4d4), **THAC0** 12 [+7], **MV** 120' (40'), **SV** D8 W9 P10 B10 S12 (8), **ML** 12, **AL** Neutral, **XP** 1,200, **NA** 1 (1), **TT** None

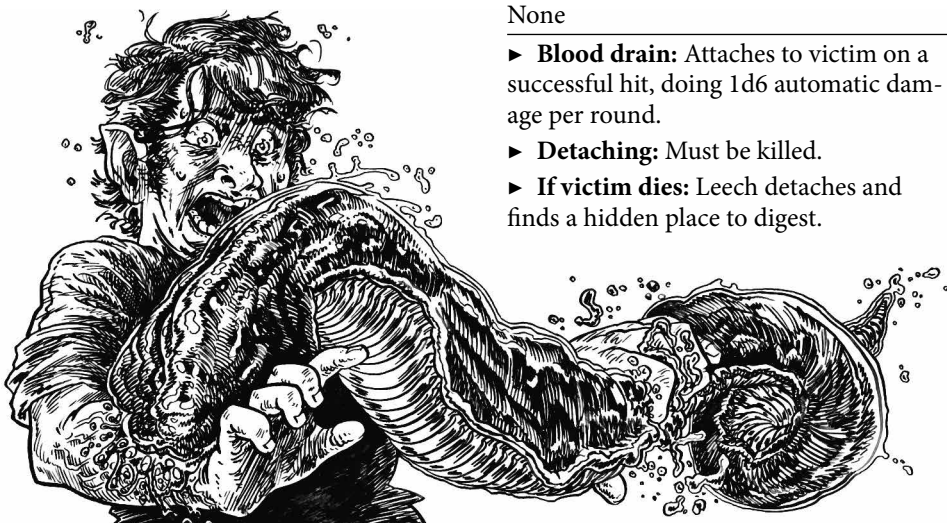
- **Tracking:** Without fault.
- **Surprise:** On a 1–5, unless target can detect invisibility.
- **If killed:** Returns to plane of origin.

## Killer Bee

Giant (1' long) bees of aggressive temperament. Build hives underground.

**AC** 7 [12], **HD** ½\* (2hp), **Att** 1 × sting (1d3 + poison + lodged stinger), **THAC0** 19 [0], **MV** 150' (50') flying, **SV** D12 W13 P14 B15 S16 (1), **ML** 9, **AL** Neutral, **XP** 6 (guard: 13, queen: 25), **NA** 1d6 (5d6), **TT** Honey

- **Aggressive:** Usually attack on sight. Always attack intruders within 30' of their hive.
- **Die after attacking:** On a successful sting attack, a killer bee dies.
- **Poison:** Causes death (**save vs poison**).
- **Lodged stinger:** Inflicts 1 damage per round, as the stinger works its way in. A round can be spent to remove it.
- **Queen:** A 2HD queen lives in the hive. The queen does not die when she stings.
- **Guards:** At least 10 bees (4 or more of which have 1HD) remain in or near the hive to protect the queen.
- **Honey:** Magical honey (around 2 pints) may be found in the hive. It heals 1d4 hit points if eaten (in its entirety).



## Kobold

Small, wicked, hairless, canine humanoids with scaly, rust-coloured skin. Dwell underground.

**AC** 7 [12], **HD** ½ (2hp), **Att** 1 × weapon (1d4 or by weapon -1), **THAC0** 19 [0], **MV** 60' (20'), **SV** D14 W15 P16 B17 S18 (NH), **ML** 6 (8 with chieftain), **AL** Chaotic, **XP** 5 (bodyguard: 15, chieftain: 20), **NA** 4d4 (6d10), **TT** P (J)

- **Ambush:** Set up surprise attacks.
- **Infravision:** 90'.
- **Hate gnomes:** Attack on sight.
- **Chieftain and bodyguards:** A 2HD (9hp) chieftain and 1d6 1+1HD (6hp) bodyguards live in the kobold lair.
- **Hoard:** Only have treasure type J when encountered in the wilderness or in their lair.

## Leech, Giant

Horrid, 3–4' long, slug-like creatures with sucker mouths. Lurk in swamps.

**AC** 7 [12], **HD** 6 (27hp), **Att** 1 × bite (1d6 + blood drain), **THAC0** 14 [+5], **MV** 90' (30'), **SV** D12 W13 P14 B15 S16 (3), **ML** 10, **AL** Neutral, **XP** 275, **NA** 0 (1d4), **TT** None

- **Blood drain:** Attaches to victim on a successful hit, doing 1d6 automatic damage per round.
- **Detaching:** Must be killed.
- **If victim dies:** Leech detaches and finds a hidden place to digest.



## Living Statue

Animated statues of any size and material (three types described below; others may be invented by the referee).

- **Immunity:** Unaffected by *sleep* spells.
- **Magical origins:** Created by powerful wizards.

## Crystal Living Statue

Formed of crystals. Often human in form.

**AC** 4 [15], **HD** 3 (13hp), **Att** 2 × blow (1d6), **THAC0** 17 [+2], **MV** 90' (30'), **SV** D12 W13 P14 B15 S16 (3), **ML** 11, **AL** Lawful, **XP** 35, **NA** 1d6 (1d6), **TT** None

- **Immunity:** See main entry.
- **Attacks:** Depend on form of statue (humanoid statues may use weapons, animal statues use claws, etc.).

## Iron Living Statue

**AC** 2 [17], **HD** 4 (18hp), **Att** 2 × blow (1d8), **THAC0** 16 [+3], **MV** 30' (10'), **SV** D10 W11 P12 B13 S14 (4), **ML** 11, **AL** Neutral, **XP** 75, **NA** 1d4 (1d4), **TT** None

- **Immunity:** See main entry.
- **Absorb metals:** Hits with non-magical, metal weapons cause damage, but the weapon may become stuck in the statue (**save versus spells**). Stuck weapons can be removed if the statue is killed.
- **Attacks:** Depend on form of statue (humanoid statues may use weapons, animal statues use claws, etc.).

## Rock Living Statue

Stony crust filled with magma which they shoot from their fingertips.

**AC** 4 [15], **HD** 5\*\* (22hp), **Att** 2 × magma jet (2d6), **THAC0** 15 [+4], **MV** 60' (20'), **SV** D10 W11 P12 B13 S14 (5), **ML** 11, **AL** Chaotic, **XP** 425, **NA** 1d3 (1d3), **TT** None

- **Immunity:** See main entry.

## Lizard, Giant

### Draco

6' long, carnivorous lizards with skin flaps between legs that enable gliding. Usually dwell above ground, but sometimes shelter in caves. Sometimes attack humans.

**AC** 5 [14], **HD** 4+2 (20hp), **Att** 1 × bite (1d10), **THAC0** 15 [+4], **MV** 120' (40') / 210' (70') gliding, **SV** D12 W13 P14 B15 S16 (3), **ML** 7, **AL** Neutral, **XP** 125, **NA** 1d4 (1d8), **TT** U

### Gecko

5' long, carnivorous, nocturnal lizards. Light blue scales with orange spots.

**AC** 5 [14], **HD** 3+1 (14hp), **Att** 1 × bite (1d8), **THAC0** 16 [+3], **MV** 120' (40'), **SV** D12 W13 P14 B15 S16 (2), **ML** 7, **AL** Neutral, **XP** 50, **NA** 1d6 (1d10), **TT** U

► **Cling:** Climb walls, trees, etc. and drop on victims.



## Horned Chameleon

7' long lizards whose scales change colour as camouflage.

**AC** 2 [17], **HD** 5\* (22hp), **Att** 1 × tongue/bite (2d4), 1 × horn (1d6), 1 × tail (knock down), **THAC0** 15 [+4], **MV** 120' (40'), **SV** D12 W13 P14 B15 S16 (3), **ML** 7, **AL** Neutral, **XP** 300, **NA** 1d3 (1d6), **TT** U

► **Surprise:** On a 1–5, due to camouflage.

► **Sticky tongue:** Can attack targets up to 5' away. If the attack succeeds, the victim is dragged to the mouth and bitten (2d4 damage).

► **Tail:** Causes no damage, but knocks opponent down: cannot attack that round.

### Tuatara

8' long, iguana-like, carnivorous lizards with olive scales and a ridge of white spikes along the back. Have been known to attack humans.

**AC** 4 [15], **HD** 6 (27hp), **Att** 2 × claw (1d4), 1 × bite (2d6), **THAC0** 14 [+5], **MV** 90' (30'), **SV** D10 W11 P12 B13 S14 (4), **ML** 6, **AL** Neutral, **XP** 275, **NA** 1d2 (1d4), **TT** V

► **Infravision:** 90'. Granted by retractable eye membranes.

## Lizard Man

Semi-intelligent, tribal, aquatic humanoid with reptilian heads and tails. Often encountered in swamps and dungeons, or along rivers and coastlines.

**AC** 5 [14], **HD** 2+1 (10hp), **Att** 1 × weapon (1d6+1 or by weapon + 1), **THAC0** 17 [+2], **MV** 60' (20') / 120' (40') in water, **SV** D12 W13 P14 B15 S16 (2), **ML** 12, **AL** Neutral, **XP** 25, **NA** 2d4 (6d6), **TT** D

► **Weapons:** Favour spears or large clubs.

► **Man-eaters:** Kidnap humans and demihumans, whose flesh they regard as a delicacy.



## Lycanthrope

Shapechangers with a human and an animal form.

- **Human form:** Have physical characteristics reminiscent of the associated animal type.
- **Mundane damage immunity:** In animal form, can only be harmed by silver weapons or magic.
- **Languages:** In human form, can speak normally. In animal form, can only speak with animals of the associated type.
- **Armour:** Not used because it hinders shape-changing.
- **Summon animals:** Can summon 1–2 animals of the associated type from the surrounding area (wererats summon giant rats—see *p55*). These arrive in 1d4 rounds.
- **Wolfsbane:** If hit, must save versus poison or flee in terror.
- **Reversion:** If killed, a lycanthrope reverts to its human form.
- **Scent:** Horses and some other animals can smell lycanthropes and fear them.
- **Infection:** A character who loses more than ½ their hit points from lycanthropes' natural attacks (i.e. bites, claws) contracts lycanthropy. Humans become were-creatures of the same type (run by the referee, henceforth); non-humans die. The disease takes full effect in 2d12 days, showing signs of infection after half the time.

## Devil Swine

Corpulent humans who can change into huge swine. Love to eat human flesh. Lurk in isolated human settlements close to forests or marshes.

---

**AC** 3 [16] (9 [10] in human form), **HD** 9\* (40hp), **Att** 1 × gore (2d6) or 1 × weapon (1d6 or by weapon) or 1 × magic (charm), **THAC0** 12 [+7], **MV** 180' (60') / 120' (40') in human form, **SV** D8 W9 P10 B10 S12 (9), **ML** 10, **AL** Chaotic, **XP** 1,600, **NA** 1d3 (1d4), **TT** C

---

- **Shapechange:** Only at night.
- **Ambush:** Prefer to attack by surprise.
- **Charm person:** 3 times a day. **Save versus spells at –2** or be charmed: move towards the devil swine (resisting those who try to prevent it); obey the devil swine's commands (if understood); defend the devil swine; unable to cast spells or use magic items; unable to harm the devil swine. Killing the devil swine breaks the charm.
- **Charmed victims:** 1d4–1 accompany a devil swine.

## Werebear

Highly intelligent, also in bear form. Dwell alone or among normal bears.

---

**AC** 2 [17] (8 [11] in human form), **HD** 6\* (27hp), **Att** 2 × claw (2d4), 1 × bite (2d8), **THAC0** 14 [+5], **MV** 120' (40'), **SV** D10 W11 P12 B13 S14 (6), **ML** 10, **AL** Neutral, **XP** 500, **NA** 1d4 (1d4), **TT** C

---

- **Amiable:** May be friendly, if approached peacefully.
- **Bear hug:** If a victim is hit by both claw attacks in the same round, the werebear can hug for an extra 2d8 automatic damage.

## Wereboar

Semi-intelligent and irascible. In human form, often appear like berserkers.

**AC** 4 [15] (9 [10] in human form), **HD** 4+1\* (19hp), **Att** 1 × tusk/bite (2d6), **THAC0** 15 [+4], **MV** 150' (50'), **SV** D10 W11 P12 B13 S14 (4), **ML** 9, **AL** Neutral, **XP** 200, **NA** 1d4 (2d4), **TT** C

► **Battle rage:** In human form, may enter a berserk rage: +2 to hit; fight to the death. Rage sometimes causes them to attack their allies.

## Wererat

Intelligent, humanoid rats who can change into normal humans.

**AC** 7 [12] (9 [10] in human form), **HD** 3\* (13hp), **Att** 1 × bite (1d4) or 1 × weapon (1d6 or by weapon), **THAC0** 17 [+2], **MV** 120' (40'), **SV** D12 W13 P14 B15 S16 (3), **ML** 8, **AL** Chaotic, **XP** 50, **NA** 1d8 (2d8), **TT** C

- **Surprise:** On a 1–4; set ambushes.
- **Languages:** Can speak Common in both forms.
- **Weapons:** May also use weapons in animal form.

## Weretiger

Exhibit feline behaviour: curious, but dangerous when cornered. Talented swimmers and trackers.

**AC** 3 [16] (9 [10] in human form), **HD** 5\* (22hp), **Att** 2 × claw (1d6), 1 × bite (2d6), **THAC0** 15 [+4], **MV** 150' (50'), **SV** D10 W11 P12 B13 S14 (5), **ML** 9, **AL** Neutral, **XP** 300, **NA** 1d4 (1d4), **TT** C

- **Surprise:** On a 1–4, due to stealth.

## Werewolf

Semi-intelligent pack hunters.

**AC** 5 [14] (9 [10] in human form), **HD** 4\* (18hp), **Att** 1 × bite (2d4), **THAC0** 16 [+3], **MV** 180' (60'), **SV** D10 W11 P12 B13 S14 (4), **ML** 8, **AL** Chaotic, **XP** 125 (leader: 300), **NA** 1d6 (2d6), **TT** C

► **Leader:** Groups of 5+ are led by a werewolf with 5HD (30hp). The leader gains a +2 bonus to damage rolls.

## Manticore

Monstrosities with the face of a man, the body of a lion, bat-like wings, and a tail bristling with spikes. Love eating humans. Dwell in wild, mountainous regions.

**AC** 4 [15], **HD** 6+1 (28hp), **Att** [2 × claw (1d4), 1 × bite (2d4)] or 6 × tail spike (1d6), **THAC0** 13 [+6], **MV** 120' (40') / 180' (60') flying, **SV** D10 W11 P12 B13 S14 (6), **ML** 9, **AL** Chaotic, **XP** 350, **NA** 1d2 (1d4), **TT** D

- **Tail spikes:** 180' range. 24 in total; 2 regrow each day.
- **Track and ambush:** Follow humans and attack with tail spikes when they stop to rest.

## Mastodon

Shaggy elephants with large tusks. Live in icy or Lost World regions.

**AC** 3 [16], **HD** 15 (67hp), **Att** 2 × tusk (2d6) or 1 × trample (4d8), **THAC0** 9 [+10], **MV** 120' (40'), **SV** D8 W9 P10 B10 S12 (8), **ML** 8, **AL** Neutral, **XP** 1,350, **NA** 0 (2d8), **TT** Tusks

- **Charge:** In first round of combat, when not in melee. Requires a clear run of at least 20 yards. Tusks inflict double damage.
- **Trample:** 3-in-4 chance of trampling each round. +4 to hit human-sized or smaller creatures.
- **Ivory:** 2d4 × 100gp per tusk.

## Medium

1st level NPC magic-users.

**AC** 9 [10], **HD** 1\*\* (4hp), **Att** 1 × dagger (1d4) or 1 × spell, **THAC0** 19 [0], **MV** 120' (40'), **SV** D13 W14 P13 B16 S15 (Magic-user 1), **ML** 7, **AL** Any, **XP** 16, **NA** 1d4 (1d12), **TT** V

► **Spells:** Each individual has one 1st level arcane spell memorized. (Choose or select at random.)

► **Master:** 50% of groups are led by a magic-user of 3rd level. The master has two 1st level spells and one 2nd level spell. (Choose or select at random.)

## Medusa

Deadly creatures of a magical nature that look like women with writhing snakes in place of hair.

**AC** 8 [11], **HD** 4\*\* (18hp), **Att** 1 × snake-bites (1d6 + poison), **THAC0** 16 [+3], **MV** 90' (30'), **SV** D10 W11 P12 B13 S14 (4), **ML** 8, **AL** Chaotic, **XP** 175, **NA** 1d3 (1d4), **TT** F

► **Disguise:** Use hooded cloaks to lure victims close before revealing their true form.

► **Petrification:** Anyone who looks at an undisguised medusa will be turned to stone (**save versus petrify**).

► **Averting eyes:** -4 penalty to hit; the medusa gains a +2 bonus to attack.

► **Mirrors:** The reflection of a medusa is harmless. If a medusa sees her own reflection, she must save or be petrified.

► **Poison:** The snakes' bites are venomous: **save versus poison** or die in 1 turn.

► **Magic resistance:** +2 bonus to saves versus spells.

## Merchant

Organized traders who travel between settlements in well-armed caravans, buying and selling trade goods (e.g. gold, jewels, silk, spices, wine, etc.).

**AC** 5 [14], **HD** 1 (4hp), **Att** 1 × weapon (1d6 or by weapon), **THAC0** 19 [0], **MV** 90' (30'), **SV** D12 W13 P14 B15 S16 (1), **ML** Varies, **AL** Neutral, **XP** 10, **NA** 0 (1d20), **TT** A

► **Weapons:** Sword and dagger.

► **Mounted:** On horse, camel, or mule (by terrain).

► **Wagons:** 2 per merchant. Pulled by horses, mules, or camels (by terrain).

► **Caravan guards:** For every merchant, 4 guards are present (1st level fighters). **AC** 4 [15], with crossbows, swords, daggers.

► **Guard lieutenants:** For every 5 merchants, 2 lieutenants are present (2nd–3rd level fighters). **AC** 4 [15]. Equipped as guards.

► **Guard captain:** Guards are led by a 5th level fighter. **AC** 4 [15]. Equipped as guards.

► **Pack animals:** 1d12 extra horses, mules, or camels.

► **Treasure:** Should be reduced, if less than 10 merchants are in the group.



## Merman

Aquatic humanoids with fish tails in place of legs. Live in coastal waters, farming seaweed and hunting fish.

**AC** 6 [13], **HD** 1 (4hp), **Att** 1 × weapon (1d6 or by weapon), **THAC0** 19 [0], **MV** 120' (40'), **SV** D12 W13 P14 B15 S16 (1), **ML** 8, **AL** Neutral, **XP** 10 (leader: 20/75), **NA** 0 (1d20), **TT** A

- **Weapons:** Spears, tridents, or daggers.
- **Leaders:** For every 10 in a group, there is a 2HD leader. For every 50, there is a 4HD leader (saves: D10 W11 P12 B13 S14 (4)).
- **Underwater villages:** Home to 1d3 × 100 individuals.
- **Guardians:** Use trained sea creatures or monsters to guard their homes.



## Minotaur

Large, brutish, bull-headed men with a craving for human flesh. Dwell in mazes and labyrinths.

**AC** 6 [13], **HD** 6 (27hp), **Att** [1 × gore (1d6), 1 × bite (1d6)] or 1 × weapon (1d6 + 2 or by weapon + 2), **THAC0** 14 [+5], **MV** 120' (40'), **SV** D10 W11 P12 B13 S14 (6), **ML** 12, **AL** Chaotic, **XP** 275, **NA** 1d6 (1d8), **TT** C

- **Weapons:** Prefer axes, clubs, or spears.
- **Aggressive:** Attack same size or smaller creatures on sight. Pursue until the victims are out of sight.

## Mule

Stubborn horse/donkey cross-breeds used as beasts of burden.

**AC** 7 [12], **HD** 2 (9hp), **Att** 1 × kick (1d4) or 1 × bite (1d3), **THAC0** 18 [+1], **MV** 120' (40'), **SV** D14 W15 P16 B17 S18 (NH), **ML** 8, **AL** Neutral, **XP** 20, **NA** 1d8 (2d6), **TT** None

- **Tenacious:** Can be taken underground, if the referee allows it.
- **Defensive:** May attack if threatened, but cannot be trained to attack on command.
- **Carry loads:** Up to 2,000 coins unencumbered; up to 4,000 at half speed.

## Mummy

Undead humanoids wrapped in funerary bandages. Haunt ruins and tombs.

**AC** 3 [16], **HD** 5+1\* (23hp), **Att** 1 × touch (1d12 + disease), **THAC0** 14 [+5], **MV** 60' (20'), **SV** D10 W11 P12 B13 S14 (5), **ML** 12, **AL** Chaotic, **XP** 400, **NA** 1d4 (1d12), **TT** D

- **Paralyse with terror:** Anyone seeing a mummy must **save versus paralysis** or be paralysed with terror. Paralysis is broken if the mummy attacks or goes out of sight.
- **Disease:** Anyone hit contracts a horrible rotting disease. Magical healing is ineffective; natural healing is ten times slower. The disease can only be removed by magic.
- **Damage immunity:** Only harmed by fire or magic. All damage reduced by half.
- **Undead:** Make no noise, until they attack. Immune to effects that affect living creatures (e.g. poison). Immune to mind-affecting or mind-reading spells (e.g. *charm*, *hold*, *sleep*).







## Nixie

3' tall sprites that appear as attractive women with blueish, greenish, or greyish skin. Lair in the deepest parts of rivers and lakes.

**AC** 7 [12], **HD** 1 (4hp), **Att** 1 × weapon (1d4) or 1 × group spell (charm), **THAC0** 19 [0], **MV** 120' (40'), **SV** D12 W13 P13 B15 S15 (Elf 1), **ML** 6, **AL** Neutral, **XP** 10, **NA** 0 (2d20), **TT** B

- **Shy:** Will try to charm intruders, rather than entering combat.
- **Weapons:** Daggers and small tridents (as spears).
- **Charm:** 10 nixies together can cast a charm to enchant a victim to serve them for one year. **Save versus spells** or be charmed: move towards the nixies (resisting those who try to prevent it); defend the nixies; obey the nixies' commands (if understood); unable to cast spells or use magic items; unable to harm the nixies. Killing the nixies breaks the charm.

► **Summon giant bass:** Each nixie can summon one fish to aid in combat (see *Giant Bass*, p28).

► **Bestow water breathing:** Can cast upon charmed slaves. Lasts for one day, then must be refreshed.

## Noble

Powerful humans with noble titles (e.g. Count, Duke, Knight, etc.). Dwell in castles.

**AC** 2 [17], **HD** 3 (13hp), **Att** 1 × weapon (1d8 or by weapon), **THAC0** 17 [+2], **MV** 60' (20'), **SV** D12 W13 P14 B15 S16 (3), **ML** 8, **AL** Any, **XP** 35, **NA** 2d6 (2d6), **TT** V × 3

- **Class:** Usually treated as 3rd level fighters, but may be of any class and level.
- **Squire and retainers:** Accompanied by a 2nd level fighter (a squire) and up to ten 1st level fighters (retainers).

## Neanderthal (Caveman)

Squat, powerful, primitive demihumans with ape-like faces. Dwell in caverns and hunt cave bears. Shy of contact with humans (with whom they are related), but friendly with dwarves and gnomes.

**AC** 8 [11], **HD** 2 (9hp), **Att** 1 × weapon (2d4 or by weapon + 1), **THAC0** 18 [+1], **MV** 120' (40'), **SV** D12 W13 P14 B15 S16 (2), **ML** 7, **AL** Lawful, **XP** 20, **NA** 1d10 (1d4 × 10), **TT** C

- **Weapons:** Prefer stone axes, stone hammers, clubs, or spears.
- **Leaders:** Two 6HD leaders (one male, one female) live in the neanderthal lair. They are 10' tall and of a related but distinct race.
- **Racial animosity:** Attack ogres on sight. Hate goblins and kobolds.
- **Pets:** Sometimes keep white apes as pets (see *Ape*, *White*, p6).

## Nomad

Superstitious tribes who wander steppes and desert regions, living in tents or temporary huts. Demeanour depends on the tribe: some are warlike, others peaceful.

**AC** 7 [12] to 4, **HD** 1 (4hp), **Att** 1 × weapon (1d6 or by weapon), **THAC0** 19 [0], **MV** 120' (40'), **SV** D12 W13 P14 B15 S16 (1), **ML** 8, **AL** Any, **XP** 10, **NA** 0 (1d4 × 10), **TT** A

► **Mounted:** On riding horses or (in the desert) on camels.

► **Arms (desert):** 50% of group have: leather armour, shield, lance; 30% have: chainmail, shield, lance; 20% have: leather armour, shortbow.

► **Arms (steppes):** 50% of group have: leather armour, shortbow; 20% have: leather armour, shield, lance; 20% have: chainmail, shortbow; 10% have: chainmail, shield, lance, and may be mounted on a war horse.

► **Leaders:** For every 25 nomads, there is a 2nd level fighter. For every 40 nomads, there is a 4th level fighter.

► **Camps:** Hunting / foraging groups commonly combine and live in a tribe of up to 300 nomad warriors.

► **Camp leaders:** Tribal chief (8th level fighter), plus a 5th level fighter for every 100 nomads. 50% chance of a cleric (9th level); 25% chance of a magic-user (8th level).

► **Hoard:** Only have treasure type A in the camp.

► **Traders:** Often carry trade route tales of faraway lands.

## Normal Human

Non-adventuring humans without a character class. Artists, beggars, children, craftspeople, farmers, fishermen, housewives, scholars, slaves.

**AC** 9 [10], **HD** ½ (2hp), **Att** 1 × weapon (1d6 or by weapon), **THAC0** 20 [-1], **MV** 120' (40'), **SV** D14 W15 P16 B17 S18 (NH), **ML** 6, **AL** Any, usually Lawful, **XP** 5, **NA** 1d4 (1d20), **TT** U

► **Gaining XP:** Must select a character class after gaining XP on an adventure.



## Ochre Jelly

Giant, ochre amoeboids.

**AC** 8 [11], **HD** 5\* (22hp), **Att** 1 × touch (2d6), **THAC0** 15 [+4], **MV** 30' (10'), **SV** D12 W13 P14 B15 S16 (3), **ML** 12, **AL** Neutral, **XP** 300, **NA** 1 (0), **TT** None

► **Immunity:** Unharmd by all attacks except cold or fire.

► **Division:** Lightning or attacks with weapons cause the jelly to divide into 1d4+1 2HD jellies that do half damage.

► **Acid:** After a successful attack, sticks to the victim and exudes acid. The acid inflicts 2d6 damage per round to flesh and destroys cloth, leather, or wood in one round. (Stone and metal are unaffected.)

► **Seep:** Can squeeze through small holes and cracks.

## Octopus, Giant

Giant, eight-armed cephalopods. Lurk in coastal waters, close to settlements.

**AC** 7 [12], **HD** 8 (36hp), **Att** 8 × tentacle (1d3 + constriction), 1 × bite (1d6), **THAC0** 12 [+7], **MV** 90' (30'), **SV** D10 W11 P12 B13 S14 (4), **ML** 7, **AL** Neutral, **XP** 650, **NA** 0 (1d2), **TT** None

- **Constriction:** Tentacles grab and constrict after a hit. Each constricting tentacle inflicts: 1d3 automatic damage per round, plus a –1 penalty to attacks.
- **Severing tentacles:** Requires a hit with a cutting weapon inflicting 6 or more damage.
- **Ink cloud:** When escaping, can emit a cloud of black ink (80' diameter) and jet away at 3 times normal speed.



## Ogre

Frightful humanoids, 8–10' tall, dressed in animal hides. Often dwell in caves.

**AC** 5 [14], **HD** 4+1 (19hp), **Att** 1 × club (1d10), **THAC0** 15 [+4], **MV** 90' (30'), **SV** D10 W11 P12 B13 S14 (4), **ML** 10, **AL** Chaotic, **XP** 125, **NA** 1d6 (2d6), **TT** C + 1,000gp

- **Sack:** Outside of the lair, carry a sack containing 1d6 × 100gp.
- **Hate neanderthals:** Attack on sight.

## Orc

Ugly, bad-tempered, animalistic humanoids who live underground and are active at night. Sadistic bullies who hate other living creatures and delight in killing.

**AC** 6 [13], **HD** 1 (4hp), **Att** 1 × weapon (1d6 or by weapon), **THAC0** 19 [0], **MV** 120' (40'), **SV** D12 W13 P14 B15 S16 (1), **ML** 6 (8 with leader), **AL** Chaotic, **XP** 10 (leader: 10, chieftain: 75), **NA** 2d4 (1d6 × 10), **TT** D

- **Hate the sun:** –1 to hit in full daylight.
- **Weapons:** Prefer axes, clubs, spears, or swords. Only leaders can use mechanical weapons (e.g. crossbows, catapults).
- **Craven:** Afraid of larger or stronger-looking creatures, though leaders may force them to fight.
- **Leader:** Groups are led by an orc with 8 hit points. The leader gains a +1 bonus to damage rolls. Leaders have defeated other orcs in combat to gain their position.
- **Orc chieftain:** A 4HD (15hp) chieftain rules an orc tribe. The chieftain gains a +2 bonus to damage rolls.
- **Giant companions:** For every 20 orcs, there is a 1-in-6 chance of an ogre (p52) accompanying them. There is a 1-in-10 chance of a troll (p65) living in the lair.
- **Tribal:** Orcs of different tribes may fight among themselves, unless their leaders command them not to. Each tribe has its own lair and has as many females as males, and two whelps per two adults.
- **Mercenaries:** Orcs may be hired to fight in Chaotic armies. They delight in wanton killing and razing of settlements.



## Owl Bear

Huge (8' tall, 1,500 pounds), ill-tempered, carnivorous bear-like creature with the face of an owl. Owl bears are found in dense forests and underground.

**AC** 5 [14], **HD** 5 (22hp), **Att** 2 × claw (1d8), 1 × bite (1d8), **THAC0** 15 [+4], **MV** 120' (40'), **SV** D12 W13 P14 B15 S16 (3), **ML** 9, **AL** Neutral, **XP** 175, **NA** 1d4 (1d4), **TT** C

► **Bear hug:** If a victim is hit by both paws in the same round, the owl bear hugs for an extra 2d8 automatic damage.

## Pegasus

Semi-intelligent winged horses that are wilful and timid.

**AC** 6 [13], **HD** 2+2 (11hp), **Att** 2 × hoof (1d6), **THAC0** 17 [+2], **MV** 240' (80') / 480' (160') flying, **SV** D12 W13 P14 B15 S16 (2), **ML** 8, **AL** Lawful, **XP** 25, **NA** 0 (1d12), **TT** None

► **Hate hippogriffs:** Natural enemies.

► **Mount:** Can carry a human-sized rider.

► **Training:** If captured when young, will serve Lawful characters.

## Pirate

Sailors who make a living by raiding coastal settlements, robbing other ships, and illegal slaving. Typically ply the open seas. Renowned for their ruthless and evil ways.

**AC** 7 [12] or 5 [14], **HD** 1 (4hp), **Att** 1 × weapon (1d6 or by weapon), **THAC0** 19 [0], **MV** 120' (40'), **SV** D12 W13 P14 B15 S16 (1), **ML** 7, **AL** Chaotic, **XP** 10, **NA** 0 (see below), **TT** A

► **Ships and crew:** Depends where encountered. Rivers or lakes: 1d8 river boats (1d2 × 10 pirates each); coastal waters: 1d6 small galleys (1d3+1 × 10 pirates each); any: 1d4 longships (1d3+2 × 10 pirates each); ocean: 1d3 small warships (1d5+3 × 10 pirates each). (See *Water Vessels in Classic Fantasy: Characters* for details on ships.)

► **Arms:** 50% of group have: leather armour, sword; 35% have: leather armour, sword, crossbow; 15% have: chainmail, sword.

► **Leaders:** For every 30 pirates, there is a 4th level fighter. For every 50 pirates, and for each ship, there is a 5th level fighter. For every 100 pirates, and per fleet, there is an 8th level fighter.

► **Fleet commander:** Fleets of 300 or more pirates are led by a pirate lord (11th level fighter). 75% chance of a magic-user (level 1d2+8).

► **Treacherous:** Will attack other pirates, if they can profit from it.

► **Prisoners:** 25% chance of 1d3 prisoners to be ransomed.

► **Treasure:** Divided between vessels. Instead of carrying with them, may have a map to where it is buried.

► **Havens:** Lawless, fortified, coastal towns may act as a haven for pirates.

## Pixie

1–2' tall humanoids with insectoid wings. Distant relatives of elves.

**AC** 3 [16], **HD** 1\* (4hp), **Att** 1 × dagger (1d4), **THAC0** 19 [0], **MV** 90' (30') / 180' (60') flying, **SV** D12 W13 P13 B15 S15 (Elf 1), **ML** 7, **AL** Neutral, **XP** 13, **NA** 2d4 (1d4 × 10), **TT** R + S

- **Invisible:** Naturally invisible, but may choose to reveal themselves. May remain invisible when attacking: cannot be attacked in the first round; in subsequent rounds, may be attacked at –2 to hit (locatable by faint shadows and air movement).
- **Surprise:** Always surprise, if invisible.
- **Limited flight:** Small wings only allow 3 turns of flight. Must rest 1 turn after flying.

## Pterosaur

Predatory, winged reptiles that live in warm climes, hunting creatures on the ground by gliding on air currents. Often found in Lost World regions.

### Pteranodon

Wingspan of up to 50'. Highly aggressive; often prey on humanoids.

**AC** 6 [13], **HD** 5 (22hp), **Att** 1 × bite (1d12), **THAC0** 15 [+4], **MV** 240' (80') flying, **SV** D12 W13 P14 B15 S16 (3), **ML** 8, **AL** Neutral, **XP** 175, **NA** 0 (1d4), **TT** V

### Pterodactyl

8–10' wingspan. Prey on small to medium animals, but will attack humanoids, if very hungry.

**AC** 7 [12], **HD** 1 (4hp), **Att** 1 × bite (1d3), **THAC0** 19 [0], **MV** 180' (60') flying, **SV** D12 W13 P14 B15 S16 (1), **ML** 7, **AL** Neutral, **XP** 10, **NA** 0 (2d4), **TT** None

## Purple Worm

Gigantic, slimy worms with bodies 100' long and 8–10' thick. Bore tunnels through the earth and come to the surface to eat other creatures.

**AC** 6 [13], **HD** 15\* (67hp), **Att** 1 × bite (2d8), 1 × sting (1d8 + poison), **THAC0** 9 [+10], **MV** 60' (20'), **SV** D8 W9 P10 B10 S12 (8), **ML** 10, **AL** Neutral, **XP** 2,300, **NA** 1d2 (1d4), **TT** D

- **Swallow whole:** A bite attack roll of natural 20, or 4 or more than the target number required, indicates that a human-sized (or smaller) victim is swallowed. Inside the worm's belly: suffer 3d6 damage per round (until the worm dies); may attack with sharp weapons at –4 to hit; body digested in 6 turns after death.
- **Poison:** Causes death (**save vs poison**).
- **In restricted spaces:** May not always be able to bite and sting at once.





## Rat

Multitudinous, disease-ridden rodents that will eat anything. Avoid contact with humans, but may attack if defending their nest or if summoned and commanded by magic (e.g. see *Wererat*, p45).

- **Disease:** Bite has a 1-in-20 chance of infecting the target (**save versus poison**). The disease has a 1-in-4 chance of being deadly (die in 1d6 days). Otherwise, the victim is sick and bedridden for one month.
- **Afraid of fire:** Will flee fire, unless forced to fight by summoner.
- **Attacking in water:** May attack without penalty; excellent swimmers.

## Giant Rat

3' long (or larger), with black or grey fur. Often live in dark, dungeon areas and close to undead monsters.

AC 7 [12], HD ½ (2hp), Att 1 × bite (1d3 + disease), THAC0 19 [0], MV 120' (40') / 60' (20') swimming, SV D12 W13 P14 B15 S16 (1), ML 8, AL Neutral, XP 5, NA 3d6 (3d10), TT C

- **Disease; Afraid of fire; Attacking in water:** See main entry.

## Normal Rat

Swarming packs of 6" to 2' long individuals, with brown or grey fur.

AC 9 [10], HD 1hp, Att 1 × bite per pack (1d6 + disease), THAC0 19 [0], MV 60' (20') / 30' (10') swimming, SV D14 W15 P16 B17 S18 (NH), ML 5, AL Neutral, XP 5, NA 5d10 (2d10), TT L

- **Disease; Afraid of fire; Attacking in water:** See main entry.
- **Pack:** Each group of 5–10 rats attacks as a pack. Each pack makes a single attack roll against one creature.
- **Engulf:** The creature attacked must **save versus death** or fall prone, unable to attack until able to stand up again.

## Rhagodessa

Huge, hairy, nocturnal arachnid carnivores with large heads and mandibles and 10 legs. Yellow head and abdomen, dark brown thorax. Dwell in caves, hunt voraciously.

AC 5 [14], HD 4+2 (20hp), Att 1 × sucker (grab), 1 × bite (2d8), THAC0 15 [+4], MV 150' (50'), SV D12 W13 P14 B15 S16 (2), ML 9, AL Neutral, XP 125, NA 1d4 (1d6), TT U

- **Suckers:** Front legs equipped with suckers for grabbing prey.
- **Grab:** When hit with a sucker, the victim is stuck and will be bitten automatically next round.
- **Cling:** Can walk on walls.

## Rhinoceros

Dim, armoured, herbivorous mammals.

► **Charge:** If disturbed or threatened, will charge in a random direction. Requires a clear run of at least 20 yards. Make a horn attack on all in the path: inflicts double damage.

► **Trample:** 3-in-4 chance of trampling each round. +4 to hit human-sized or smaller creatures.

### Normal Rhinoceros

**AC** 5 [14], **HD** 6 (27hp), **Att** 1 × horn (2d4) or 1 × trample (2d8), **THAC0** 14 [+5], **MV** 120' (40'), **SV** D12 W13 P14 B15 S16 (3), **ML** 6, **AL** Neutral, **XP** 275, **NA** 0 (1d12), **TT** None

► **Charge; Trample:** See main entry.

### Woolly Rhinoceros

Giant rhinoceroses adapted for cold climates: their bodies covered with shaggy, white fur. Live in herds, in cold Lost World areas.

**AC** 4 [15], **HD** 8 (36hp), **Att** 1 × horn (2d6) or 1 × trample (2d12), **THAC0** 12 [+7], **MV** 120' (40'), **SV** D10 W11 P12 B13 S14 (4), **ML** 6, **AL** Neutral, **XP** 650, **NA** 0 (1d8), **TT** None

► **Charge; Trample:** See main entry.

## Robber Fly

3' long, carnivorous flies with yellow and black stripes. Look similar to killer bees, which they hunt. May attack humans.

**AC** 6 [13], **HD** 2 (9hp), **Att** 1 × bite (1d8), **THAC0** 18 [+1], **MV** 90' (30') / 180' (60') flying, **SV** D12 W13 P14 B15 S16 (1), **ML** 8, **AL** Neutral, **XP** 20, **NA** 1d6 (2d6), **TT** U

► **Surprise:** Hunt patiently. Surprise on a 1–4, when waiting in shadows for prey.

► **Poison immunity:** Unharmed by killer bees' poison.

► **Leap:** Can leap up to 30' and attack.

## Roc

Gigantic birds of prey that nest in the highest peaks of isolated mountain ranges. Will attack intruders, if approached carelessly.

► **Alignment reaction:** –1 to reaction rolls versus Neutral characters; –2 versus Chaotic characters.

► **Swoop:** Can dive onto victims visible from above. If the victim is surprised, the attack inflicts double damage. On an attack roll of 18 or more, the victim can be carried away (if of appropriate size).

► **Eggs:** 1d6 eggs or chicks in 50% of nests.

► **Trainable:** Can be trained, if captured when young.

### Giant Roc

**AC** 0 [19], **HD** 36 (162hp), **Att** 2 × claw (3d6), 1 × bite (8d6), **THAC0** 5 [+14], **MV** 60' (20') / 480' (160') flying, **SV** D2 W3 P4 B3 S6 (18), **ML** 10 (12 in lair), **AL** Lawful, **XP** 6,250, **NA** 0 (1), **TT** I

► **Alignment reaction; Swoop:** See main entry.

### Large Roc

**AC** 2 [17], **HD** 12 (54hp), **Att** 2 × claw (1d8), 1 × bite (2d10), **THAC0** 10 [+9], **MV** 60' (20') / 480' (160') flying, **SV** D10 W11 P12 B13 S14 (6), **ML** 9 (12 in lair), **AL** Lawful, **XP** 1,100, **NA** 0 (1d8), **TT** I

► **Alignment reaction; Swoop:** See main entry.

### Small Roc

**AC** 4 [15], **HD** 6 (27hp), **Att** 2 × claw (1d4+1), 1 × bite (2d6), **THAC0** 14 [+5], **MV** 60' (20') / 480' (160') flying, **SV** D12 W13 P14 B15 S16 (3), **ML** 8 (12 in lair), **AL** Lawful, **XP** 275, **NA** 0 (1d12), **TT** I

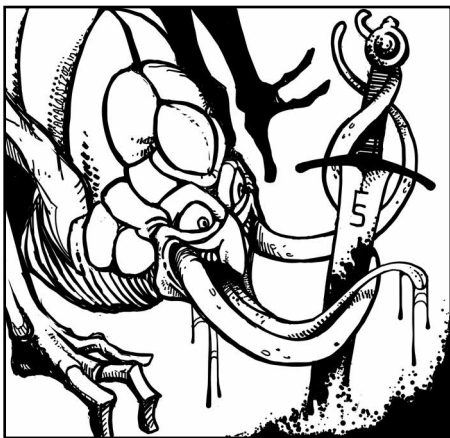
► **Alignment reaction; Swoop:** See main entry.

## Rock Baboon

Large, ferocious, semi-intelligent baboons that live in packs led by a powerful male. Communicate with screams. Omnivorous, but prefer flesh.

**AC** 6 [13], **HD** 2 (9hp), **Att** 1 × club (1d6), 1 × bite (1d3), **THAC0** 18 [+1], **MV** 120' (40'), **SV** D12 W13 P14 B15 S16 (2), **ML** 8, **AL** Neutral, **XP** 20, **NA** 2d6 (5d6), **TT** U

► **Weapons:** Wield bones or branches as clubs. (Do not use other tools.)



## Rust Monster

Magical, armadillo-like creatures with long tails and two long, antennae-like feelers. Feed on rusted metal.

**AC** 2 [17], **HD** 5 (22hp), **Att** 1 × feeler (rusting), **THAC0** 15 [+4], **MV** 120' (40'), **SV** D12 W13 P14 B15 S16 (3), **ML** 7, **AL** Neutral, **XP** 175, **NA** 1d4 (1d4), **TT** None

► **Rusting:** Metal that touches a rust monster (e.g. weapons that hit it, or armour struck by a feeler) crumbles instantly to rust. Magic items have a 10% chance per “plus”, to be unaffected on each successful hit. Each time a magic item is affected, it loses one “plus”.

► **Smell metal:** Attracted by the scent.

## Salamander

Giant, magical reptiles with an affinity for extreme heat or cold.

### Flame Salamander

12'–16' long, intelligent serpents with lizard-like heads and legs. Bright orange/yellow/red scales. Natives of the plane of elemental fire, but also live in volcanoes and scorching deserts.

**AC** 2 [17], **HD** 8\* (36hp), **Att** 2 × claw (1d4), 1 × bite (1d8), 1 × heat aura (1d8), **THAC0** 12 [+7], **MV** 120' (40'), **SV** D8 W9 P10 B10 S12 (8), **ML** 8, **AL** Neutral, **XP** 1,200, **NA** 1d4+1 (2d4), **TT** F

► **Heat aura:** All creatures within 20' suffer 1d8 damage per round.

► **Mundane damage immunity:** Can only be harmed by magical attacks.

► **Fire immunity:** Unharmed by fire.

► **Hate frost salamanders:** Will attack on sight.

### Frost Salamander

Giant, 6-legged lizards with blue/white scales. Dwell in icy, wilderness regions.

**AC** 3 [16], **HD** 12\* (54hp), **Att** 4 × claw (1d6), 1 × bite (2d6), 1 × cold aura (1d8), **THAC0** 10 [+9], **MV** 120' (40'), **SV** D6 W7 P8 B8 S10 (12), **ML** 9, **AL** Chaotic, **XP** 1,900, **NA** 1d3 (1d3), **TT** E

► **Cold aura:** All creatures within 20' suffer 1d8 damage per round.

► **Mundane damage immunity:** Can only be harmed by magical attacks.

► **Cold immunity:** Unharmed by cold-based attacks.

► **Hate flame salamanders:** Will attack on sight.

## Scorpion, Giant

Huge arachnids, as big as a small horse, with pincers and deadly stingers. Dwell in caverns, ruins, and deserts.

**AC** 2 [17], **HD** 4\* (18hp), **Att** 2 × claw (1d10), 1 × sting (1d4 + poison), **THAC0** 16 [+3], **MV** 150' (50'), **SV** D12 W13 P14 B15 S16 (2), **ML** 11, **AL** Chaotic, **XP** 125, **NA** 1d6 (1d6), **TT** V

- **Aggressive:** Normally attack on sight.
- **Poison:** Causes death (**save vs poison**).
- **Grab and sting:** +2 bonus to sting attack, if a claw hits.

## Sea Serpent (Lesser)

20'–30' long, serpent-like sea monsters with rows of many fins.

**AC** 5 [14], **HD** 6 (27hp), **Att** 1 × bite (2d6) or 1 × squeeze (1d10 hull damage), **THAC0** 14 [+5], **MV** 150' (50'), **SV** D12 W13 P14 B15 S16 (3), **ML** 8, **AL** Neutral, **XP** 275, **NA** 0 (2d6), **TT** None

- **Lunge:** Up to 20' out of water to use bite attack.
- **Squeeze:** Coil around and crush a vessel (of equal size or smaller).

## Shadow

Intelligent, incorporeal (but not undead) monsters that look like shadows. Able to slightly change their shape.

**AC** 7 [12], **HD** 2+2\* (11hp), **Att** 1 × touch (1d4 + strength drain), **THAC0** 17 [+2], **MV** 90' (30'), **SV** D12 W13 P14 B15 S16 (2), **ML** 12, **AL** Chaotic, **XP** 35, **NA** 1d8 (1d12), **TT** F

- **Surprise:** On a 1–5.
- **Strength drain:** Victims lose 1 STR per hit. Recovers after 8 turns. If reduced to 0 STR, the victim becomes a shadow.
- **Mundane damage immunity:** Can only be harmed by magical attacks.
- **Spell immunity:** Unaffected by *charm* and *sleep* spells.

## Shark

Aggressive, predatory fish of low intelligence and unpredictable behaviour. Live in saltwater.

- **Blood scent:** Can detect blood in water up to 300' away.
- **Feeding frenzy:** Triggered by the scent of blood: always attack; no morale checks.

### Bull Shark

8' long; brown colouration. Attack by ramming, then biting the stunned prey.

**AC** 4 [15], **HD** 2 (9hp), **Att** 1 × bite (2d4) or 1 × ram (stun), **THAC0** 18 [+1], **MV** 180' (60'), **SV** D12 W13 P14 B15 S16 (1), **ML** 7, **AL** Neutral, **XP** 20, **NA** 0 (3d6), **TT** None

- **Blood scent; Feeding frenzy:** See main entry.

- **Ram:** Stunned for 3 rounds (**save versus paralysis**).

### Great White Shark

30' long (or bigger!); grey colouration with white belly. Sometimes attack small boats.

**AC** 4 [15], **HD** 8 (36hp), **Att** 1 × bite (2d10), **THAC0** 12 [+7], **MV** 180' (60'), **SV** D10 W11 P12 B13 S14 (4), **ML** 7, **AL** Neutral, **XP** 650, **NA** 0 (1d4), **TT** None

- **Blood scent; Feeding frenzy:** See main entry.

### Mako Shark

15' long; bluish-grey or tan colouration.

**AC** 4 [15], **HD** 4 (18hp), **Att** 1 × bite (2d6), **THAC0** 16 [+3], **MV** 180' (60'), **SV** D12 W13 P14 B15 S16 (2), **ML** 7, **AL** Neutral, **XP** 75, **NA** 0 (2d6), **TT** None

- **Blood scent; Feeding frenzy:** See main entry.
- **Unpredictable:** May ignore other creatures, only to attack moments later.

## Shrew, Giant

Brown-furred, mole-like, insectivores with long snouts. Dwell underground; skilled burrowers.

**AC** 4 [15], **HD** 1 (4hp), **Att** 2 × bite (1d6), **THAC0** 19 [0], **MV** 180' (60'), **SV** D12 W13 P14 B15 S16 (1), **ML** 10, **AL** Neutral, **XP** 10, **NA** 1d4 (1d8), **TT** None

- **Initiative:** Always win initiative in the round of their first attack. +1 to initiative in the round of their second attack.
- **Ferocity:** Attack targets' heads. Targets with 3 HD or less must **save versus death** or flee.
- **Climbing:** Skilled climbers; can jump up to 5'.
- **Territorial:** Ferociously defend their hunting area from all intruders.
- **Echolocation:** Perceive their surroundings up to 60'. Unaffected by lack of light. If unable to hear (e.g. *silence*, 15' radius): AC reduced to 8 [11], -4 penalty to attacks.

## Shrieker

Giant, subterranean mushrooms that can creep around slowly.

**AC** 7 [12], **HD** 3 (13hp), **Att** None, **THAC0** 17 [+2], **MV** 9' (3'), **SV** D12 W13 P14 B15 S16 (1), **ML** 12, **AL** Neutral, **XP** 35, **NA** 1d8 (0), **TT** None

- **Shriek:** Triggered by light (up to 60' away) or movement (up to 30' away). Shriek lasts for 1d3 rounds. Each round of the shriek, there is a 50% chance of a wandering monster being attracted (will arrive in 2d6 rounds).

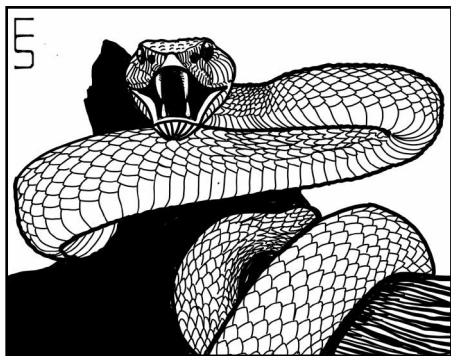


## Skeleton

Skeletal remains of humanoids, reanimated as guardians by powerful magic-users or clerics. Often encountered in cemeteries, crypts, or other forlorn places.

**AC** 7 [12], **HD** 1 (4hp), **Att** 1 × weapon (1d6 or by weapon), **THAC0** 19 [0], **MV** 60' (20'), **SV** D12 W13 P14 B15 S16 (1), **ML** 12, **AL** Chaotic, **XP** 10, **NA** 3d4 (3d10), **TT** None

- **Undead:** Make no noise, until they attack. Immune to effects that affect living creatures (e.g. poison). Immune to mind-affecting or mind-reading spells (e.g. *charm*, *hold*, *sleep*).



## Snake

Dwell in all but the most extreme climates. Will usually only attack if cornered or surprised.

### Giant Rattler

10' long snakes with brown and white diamond patterns on their scales, and a rattle of rasping scales on their tails.

**AC** 5 [14], **HD** 4\* (18hp), **Att** 2 × bite (1d4 + poison), **THAC0** 16 [+3], **MV** 120' (40'), **SV** D12 W13 P14 B15 S16 (2), **ML** 8, **AL** Neutral, **XP** 125, **NA** 1d4 (1d4), **TT** U

- **Rattle:** Shaken to warn off creatures the snake does not wish to attack.
- **Poison:** Causes death in 1d6 turns (**save versus poison**).
- **Speed:** Attack twice per round. Second attack at the end of each round.

### Pit Viper

5' long snakes with grey/green scales.

**AC** 6 [13], **HD** 2\* (9hp), **Att** 1 × bite (1d4 + poison), **THAC0** 18 [+1], **MV** 90' (30'), **SV** D12 W13 P14 B15 S16 (1), **ML** 7, **AL** Neutral, **XP** 25, **NA** 1d8 (1d8), **TT** None

- **Infravision:** 60'. (Pits in the head allow heat sense.)
- **Initiative:** Always gains initiative (no roll), due to special senses.
- **Poison:** Causes death (**save vs poison**).

## Rock Python

20' long snakes with spiralling brown and yellow patterns on their scales.

**AC** 6 [13], **HD** 5\* (22hp), **Att** 1 × bite (1d4 + constriction), **THAC0** 15 [+4], **MV** 90' (30'), **SV** D12 W13 P14 B15 S16 (3), **ML** 8, **AL** Neutral, **XP** 300, **NA** 1d3 (1d3), **TT** U

- **Constriction:** When a bite attack is successful, the python wraps around the victim and begins to squeeze, inflicting 2d4 automatic damage immediately and on each subsequent round.

## Sea Snake

6' long snakes that live underwater, coming up for breath only once per hour. Will prey on humans.

**AC** 6 [13], **HD** 3\* (13hp), **Att** 1 × bite (1hp + poison), **THAC0** 17 [+2], **MV** 90' (30'), **SV** D12 W13 P14 B15 S16 (2), **ML** 7, **AL** Neutral, **XP** 50, **NA** 1d8 (1d8), **TT** None

- **Pinprick bite:** 50% chance of going unnoticed.
- **Poison:** Slow acting; effects felt after 1d4+2 turns. **Save vs poison** or die 1 turn later. At this point, the *neutralize poison* spell has a 25% chance of not working.
- **Larger individuals:** Sea snakes with more than 3 HD may be encountered. They are 6' long for every 3 HD.

## Spitting Cobra

3' long snakes with grey/white scales. Prefer to attack from a distance with spit.

**AC** 7 [12], **HD** 1\* (4hp), **Att** 1 × spit (blindness) or 1 × bite (1d3 + poison), **THAC0** 19 [0], **MV** 90' (30'), **SV** D12 W13 P14 B15 S16 (1), **ML** 7, **AL** Neutral, **XP** 13, **NA** 1d6 (1d6), **TT** None

- **Blinding spit:** Range: 6'. A hit causes permanent blindness (**save vs poison**).
- **Poison:** Causes death in 1d10 turns (**save versus poison**).

## Spectre

Incorporeal phantoms; one of the most powerful undead monsters.

**AC** 2 [17], **HD** 6\*\* (27hp), **Att** 1 × touch (1d8 + energy drain), **THAC0** 14 [+5], **MV** 150' (50') / 300' (100') flying, **SV** D10 W11 P12 B13 S14 (6), **ML** 11, **AL** Chaotic, **XP** 725, **NA** 1d4 (1d8), **TT** E

► **Undead:** Make no noise, until they attack. Immune to effects that affect living creatures (e.g. poison). Immune to mind-affecting or mind-reading spells (e.g. *charm*, *hold*, *sleep*).

► **Mundane damage immunity:** Can only be harmed by magical attacks.

► **Energy drain:** A successfully hit target permanently loses two experience levels (or Hit Dice). This incurs a loss of two Hit Dice of hit points, as well as all other benefits due to the drained levels (e.g. spells, saving throws, etc.). A character's XP is reduced to the lowest amount for the new level. A person drained of all levels becomes a spectre next night, under the control of the spectre that killed them.



## Spider, Giant

### Black Widow

6' long, black spiders with a red hourglass pattern on their abdomens. Dwell in web-filled lairs and sometimes prey on humans.

**AC** 6 [13], **HD** 3\* (13hp), **Att** 1 × bite (2d6 + poison), **THAC0** 17 [+2], **MV** 60' (20') / 120' (40') in webs, **SV** D12 W13 P14 B15 S16 (2), **ML** 8, **AL** Neutral, **XP** 50, **NA** 1d3 (1d3), **TT** U

► **Poison:** Causes death in 1 turn (**save versus poison**).

► **Webs:** Creatures caught in webs become entangled and unable to move. Breaking free depends on Strength: 2d4 turns for strength in the normal human range; 4 rounds for strength above 18; 2 rounds for creatures with giant strength. The webs can be destroyed by fire in two rounds. All creatures in a flaming web suffer 1d6 points of damage.

### Crab Spider

5' long hunting spiders that can change their colour to match their surroundings.

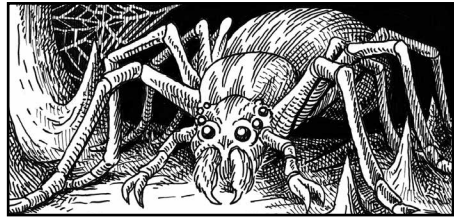
**AC** 7 [12], **HD** 2\* (9hp), **Att** 1 × bite (1d8 + poison), **THAC0** 18 [+1], **MV** 120' (40'), **SV** D12 W13 P14 B15 S16 (1), **ML** 7, **AL** Neutral, **XP** 25, **NA** 1d4 (1d4), **TT** U

► **Ambush:** Attack by dropping on victims from above.

► **Surprise:** On a 1–4, due to camouflage.

► **Cling:** Can walk on walls and ceilings.

► **Poison:** Causes death in 1d4 turns (**save versus poison with a +2 bonus**).



### Tarantella

7' long, hairy hunting spiders that resemble tarantulas. Magical in nature.

**AC** 5 [14], **HD** 4\* (18hp), **Att** 1 × bite (1d8 + poison), **THAC0** 16 [+3], **MV** 120' (40'), **SV** D12 W13 P14 B15 S16 (2), **ML** 8, **AL** Neutral, **XP** 125, **NA** 1d3 (1d3), **TT** U

► **Poison:** **Save vs poison** or dance for 2d6 turns (suffering from painful, jerking spasms that resemble a macabre dance).

► **Onlookers:** Viewers of one affected by the poison must **save versus spells** or begin dancing in the same fashion, for as long as the poisoned victim.

► **Dancing:** Those affected suffer a –4 penalty to attack rolls and AC. After 5 turns of dancing, they become exhausted: fall to the ground, helpless.

### Sprite

1' tall, winged humanoids, related to pixies and elves. They are shy, but driven by curiosity and their odd sense of humour.

**AC** 5 [14], **HD** ½\* (2hp), **Att** 1 × spell (curse), **THAC0** 19 [0], **MV** 60' (20') / 180' (60') flying, **SV** D12 W13 P13 B15 S15 (Elf 1), **ML** 7, **AL** Neutral, **XP** 6, **NA** 3d6 (5d8), **TT** S

► **Curse:** Five sprites can collectively curse a target (no attack roll; **save versus spells**). The effect is determined by the referee, but will always be used to comical effect (e.g. target trips, target's nose grows).

► **Pranksters:** Even if attacked, sprites have no interest in killing, merely in making practical jokes.

## Squid, Giant

Giant, ten-armed cephalopods. Two of the ten arms are larger, and may be used to attack ships. Dwell in the depths of the sea, only surface to find prey.

**AC** 7 [12], **HD** 6 (27hp), **Att** 8 × small tentacle (1d4 + constriction), 2 × large tentacle (1d4 + constriction or 1d10 hull damage), 1 × beak (1d10 or 2 hull damage), **THAC0** 14 [+5], **MV** 120' (40'), **SV** D12 W13 P14 B15 S16 (3), **ML** 7, **AL** Neutral, **XP** 275, **NA** 0 (1d4), **TT** V

► **Crush boats:** 25% likely to wrap the 2 large tentacles around a boat, doing 1d10 hull damage per tentacle. When the large tentacles are grappling a boat, in subsequent rounds, the beak inflicts 2 points of hull damage automatically.

► **Grab crew:** 75% likely to grab crew from the deck and drag them underwater to be eaten.

► **Constriction:** Tentacles grab and constrict after a hit. 1d4 automatic damage per round.

► **Severing tentacles:** Requires a hit that inflicts 6 or more damage (8 small tentacles) or 10 or more damage (2 large tentacles).

► **Ink cloud:** When escaping, can emit a cloud of black ink (60' diameter) and jet away at 3 times normal speed. Maximum twice a day.

► **Gargantuan specimens:** Two or three times larger can be encountered.

## Stegosaurus

Stocky, herbivorous dinosaurs with a ridge of plates along their backs, and a tail studded with spikes (used to deter attackers). Dwell in sub-tropical Lost World environments.

**AC** 3 [16], **HD** 11 (49hp), **Att** 1 × tail (2d8) or 1 × trample (2d8), **THAC0** 11 [+8], **MV** 60' (20'), **SV** D10 W11 P12 B13 S14 (6), **ML** 7, **AL** Neutral, **XP** 1,100, **NA** 0 (1d4), **TT** None

► **Trample:** 3-in-4 chance of trampling each round. +4 to hit human-sized or smaller creatures.

## Stirge

Feathered, bird-like creatures with long, sharp beaks.

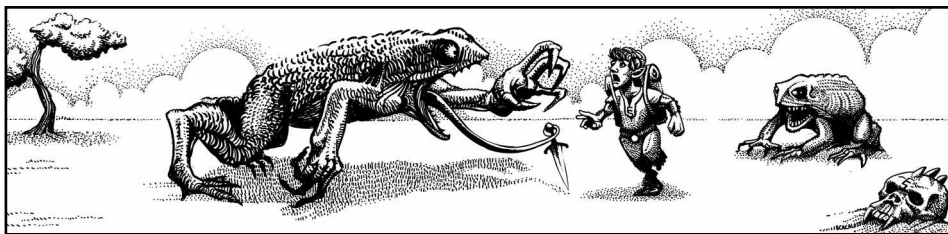
**AC** 7 [12], **HD** 1\* (4hp), **Att** 1 × beak (1d3 + blood sucking), **THAC0** 19 [0], **MV** 30' (10') / 180' (60') flying, **SV** D12 W13 P14 B15 S16 (2), **ML** 9, **AL** Neutral, **XP** 13, **NA** 1d10 (3d12), **TT** L

► **Dive attack:** First attack is at +2 to hit.

► **Blood sucking:** Upon a successful attack, attaches and drains victim's blood: 1d3 automatic damage per round.

► **Detach:** If stirge or victim dies.





## Thoul

Magical monstrosities that look like hobgoblins (except on close inspection), but combine the powers of ghouls and trolls. Sometimes live among hobgoblins.

**AC** 6 [13], **HD** 3\*\* (13hp), **Att** 2 × claw (1d3 + paralysis) or 1 × weapon (1d6 or by weapon), **THAC0** 17 [+2], **MV** 120' (40'), **SV** D12 W13 P14 B15 S16 (3), **ML** 10, **AL** Chaotic, **XP** 65, **NA** 1d6 (1d10), **TT** C

► **Paralysis:** Successful attacks cause paralysis for 2d4 turns (**save versus paralysis** negates). Elves and creatures larger than ogres are unaffected. After paralyzing a target, thouls will attack others.

► **Regeneration:** A damaged thoul gains 1 hit point at the start of each round, as long as it is alive.

## Titanotheres

Giant (12' at the shoulder), ancient relatives of the rhinoceros, with massive, blunt horns. Eat grass and tree leaves. Dwell in small herds in Lost World grasslands.

**AC** 5 [14], **HD** 12 (54hp), **Att** 1 × butt (2d6) or 1 × trample (3d8), **THAC0** 10 [+9], **MV** 120' (40'), **SV** D10 W11 P12 B13 S14 (6), **ML** 7, **AL** Neutral, **XP** 1,100, **NA** 0 (1d6), **TT** None

► **Peaceful grazers:** Will not attack if left alone.

► **Trample:** 3-in-4 chance of trampling each round. +4 to hit human-sized or smaller creatures.

## Toad, Giant

Warty amphibians with long, sticky tongues. As large as a great hound, weighing 150 to 250 pounds.

**AC** 7 [12], **HD** 2+2 (11hp), **Att** 1 × bite (1d4+1), **THAC0** 17 [+2], **MV** 90' (30'), **SV** D12 W13 P14 B15 S16 (1), **ML** 6, **AL** Neutral, **XP** 25, **NA** 1d4 (1d4), **TT** None

► **Surprise:** On a 1–3, in forests or dark dungeons, due to the ability to change colour to match their surrounding.

► **Sticky tongue:** Attack up to 15' away. On a hit, prey (up to dwarf size) is dragged to the mouth and bitten.

► **Swallow whole:** A natural 20 attack roll indicates a small victim is swallowed. Inside the toad's belly: suffer 1d6 damage per round (until the toad dies); may attack with sharp weapons at –4 to hit; body digested in 6 turns after death.

## Trader

1st level fighters who live by trading in borderland areas.

**AC** 6 [13], **HD** 1 (4hp), **Att** 1 × weapon (1d6 or by weapon), **THAC0** 19 [0], **MV** 120' (40'), **SV** D12 W13 P14 B15 S16 (1), **ML** 7, **AL** Any, **XP** 10, **NA** 1d8 (3d6), **TT** U + V

► **Arms:** Usually carry: hand-axe, sword, shield, furs (equivalent to leather armour).

► **Mules:** In the wilderness, have 1d4 mules loaded with trade goods (e.g. carved wooden items, furs, spices).

## Treant

Giant (18' tall) humanoids that look like trees. Dwell in forests. Are concerned only with protecting the plants of their home. Speak their own long-winded and circuitous language.

**AC** 2 [17], **HD** 8 (36hp), **Att** 2 × fist (2d6), **THAC0** 12 [+7], **MV** 60' (20'), **SV** D8 W9 P10 B10 S12 (8), **ML** 9, **AL** Lawful, **XP** 650, **NA** 0 (1d8), **TT** C

- **Distrust fire:** And those who wield it.
- **Surprise:** On a 1–3, in a forest, due to being mistaken for a tree. Encounter occurs at 30 yards or less.
- **Animate trees:** Each individual can animate 2 trees (within 60'; may switch trees at will). These fight as treants with movement rate 30' (10').

## Triceratops

Massive (12' to the shoulder, almost 40' long), aggressive, herbivorous dinosaurs with a protective crest behind the head, and three long horns. Dwell in Lost World grasslands.

**AC** 2 [17], **HD** 11 (49hp), **Att** 1 × gore (3d6) or 1 × trample (3d6), **THAC0** 11 [+8], **MV** 90' (30'), **SV** D10 W11 P12 B13 S14 (6), **ML** 8, **AL** Neutral, **XP** 1,100, **NA** 0 (1d4), **TT** None

- **Aggressive:** Normally attack on sight.
- **Charge:** In first round of combat, when not in melee. Requires a clear run of at least 20 yards. Horns inflict double damage.
- **Trample:** 3-in-4 chance of trampling each round. +4 to hit human-sized or smaller creatures.

## Troglodyte

Intelligent, reptilian humanoids with agile hands, long legs, short tails, and spiky combs on their heads and arms.

**AC** 5 [14], **HD** 2\* (9hp), **Att** 2 × claw (1d4), 1 × bite (1d4), **THAC0** 18 [+1], **MV** 120' (40'), **SV** D12 W13 P14 B15 S16 (2), **ML** 9, **AL** Chaotic, **XP** 25, **NA** 1d8 (5d8), **TT** A

- **Hateful:** Attempt to kill any creatures they encounter.
- **Surprise:** On a 1–4, due to the ability to change colour to match their surroundings. Lurk by rock walls and await victims.
- **Nauseating stench:** Oils on the skin have a smell that sickens humans and demihumans: **save versus poison** or suffer –2 to hit, while in melee with troglodytes.

## Troll

Intelligent, wicked, 8' tall humanoids with emaciated, rubbery bodies. Consume the flesh of other humanoids. Dwell underground, in barren wilderness, and in the ruined homes of former victims.

**AC** 4 [15], **HD** 6+3\* (30hp), **Att** 2 × talon (1d6), 1 × bite (1d10), **THAC0** 13 [+6], **MV** 120' (40'), **SV** D10 W11 P12 B13 S14 (6), **ML** 10 (8 fear of fire), **AL** Chaotic, **XP** 650, **NA** 1d8 (1d8), **TT** D

- **Regeneration:** 3 rounds after being damaged, start regaining 3hp per round. Severed limbs reattach.
- **Return from death:** If killed (0hp), will regenerate and fight again in 2d6 rounds.
- **Fire and acid:** Cannot regenerate damage from these sources. The only way to permanently kill a troll.
- **Fear of fire:** Morale 8 when attacked with fire or acid.





## Tyrannosaurus Rex

Great (over 20' tall), two-legged, predatory dinosaurs with huge jaws. Hunt human-sized or larger prey. Dwell in Lost World regions.

**AC** 3 [16], **HD** 20 (90hp), **Att** 1 × bite (6d6), **THAC0** 6 [+13], **MV** 120' (40'), **SV** D6 W7 P8 B8 S10 (10), **ML** 11, **AL** Neutral, **XP** 2,000, **NA** 0 (1), **TT** V × 3

► **Large prey:** Attack largest target first.

## Unicorn

Fantastic creatures that appear as elegant horses with a long horn. Unicorns are timid, but proud and wilful.

**AC** 2 [17], **HD** 4\* (18hp), **Att** 2 × hoof (1d8), 1 × horn (1d8), **THAC0** 16 [+3], **MV** 240' (80'), **SV** D8 W9 P10 B10 S12 (8), **ML** 7, **AL** Lawful, **XP** 125, **NA** 1d6 (1d8), **TT** None

► **Empathy with maidens:** A pure-hearted maiden can communicate with and ride a unicorn.

► **Teleport:** Once per day, up to 360' (including rider).



## Vampire

Greatly feared undead monsters that live by drinking the blood of mortals. Dwell in ruins, tombs, and deserted locales.

**AC** 2 [17], **HD** 7 to 9\*\* (31/36/40hp) **Att** 1 × touch (1d10 + energy drain) or 1 × gaze (charm), **THAC0** 13 [+6]/12 [+7]/12 [+7], **MV** 120' (40'), **SV** D8 W9 P10 B10 S12 (7 to 9), **ML** 11, **AL** Chaotic, **XP** 1,250/1,750/2,300, **NA** 1d4 (1d6), **TT** F

► **Undead:** Make no noise, until they attack. Immune to effects that affect living creatures (e.g. poison). Immune to mind-affecting or mind-reading spells (e.g. *charm*, *hold*, *sleep*).

► **Mundane damage immunity:** Can only be harmed by magical attacks.

► **Energy drain:** A successfully touched target permanently loses two experience levels (or Hit Dice). This incurs a loss of two Hit Dice of hit points, as well as all other benefits due to the drained levels (e.g. spells, saving throws, etc.). A character's XP is reduced to the lowest amount for the new level. A person drained of all levels becomes a vampire in 3 days.

► **Charming gaze: Save versus spells** at -2 or be charmed: move towards the vampire (resisting those who try to prevent it); defend the vampire; obey the vampire's commands (if understood); unable to cast spells or use magic items; unable to harm the vampire. Killing the vampire breaks the charm.

► **Regeneration:** A damaged vampire gains 3hp at the start of each round, as long as it is alive.

► **At 0hp:** Change into gaseous form; flee to coffin.

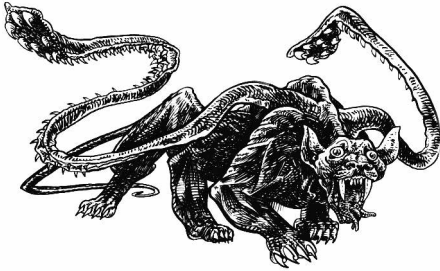
- **Change form:** At will; takes 1 round:
  - a. **Humanoid:** Standard form.
  - b. **Dire wolf:** **Att** 1 × bite (2d4), **MV** 150' (50'). AC, HD, morale, saves as vampire.
  - c. **Giant bat:** **Att** 1 × bite (1d4), **MV** 30' (10') / 180' (60') flying. AC, HD, morale, saves as vampire.
  - d. **Gaseous cloud:** **MV** 180' (60') flying. Immune to all weapons. Cannot attack.
- **Summon beasts:** In human form only. Creatures from the surrounding area: 1d10 × 10 rats (**p55**), 5d4 giant rats (**p55**), 1d10 × 10 bats (**p7**), 3d6 giant bats (**p7**), 3d6 wolves (**p72**), or 2d4 dire wolves (**p72**).
- **Coffins:** Must rest in a coffin during the day or lose 2d6hp (only regenerated by resting a full day). Cannot rest in a blessed coffin. Always keep multiple coffins in hidden locations.
- **Vulnerabilities:**
  - a. **Garlic:** Odour repels: save vs poison or unable to attack this round.
  - b. **Holy symbols:** If presented, will keep a vampire at bay (10'). May attack wielder from another direction.
  - c. **Running water:** Cannot cross (in any form), except by a bridge or carried inside a coffin.
  - d. **Mirrors:** Avoid; do not cast a reflection.
  - e. **Continual light:** Partly blinded by the light from this spell (-4 to attacks).
- **Destroying:**
  - a. **Sunlight:** Save versus death each round or be disintegrated.
  - b. **Stake through the heart:** Permanently kills.
  - c. **Immersion in water:** For 1 turn permanently kills.
  - d. **Destroying coffins:** Permanently killed if all hit points lost when unable to rest (see *coffins*).

## Veteran

Low level fighters, often on their way to or from war.

**AC** 2 [17], **HD** 1 to 3 (4/9/13hp), **Att** 1 × weapon (1d8 or by weapon), **THAC0** 19 [0], **MV** 60' (20'), **SV** D12 W13 P14 B15 S16 (F1 to F3), **ML** 9, **AL** Any, **XP** 10/20/35, **NA** 2d4 (2d6), **TT** V

► **Level and alignment:** A group may all be of the same level and alignment, or these may be determined randomly, per individual.



## Warp Beast

Large, black, six-legged, semi-intelligent monsters. Look similar to panthers with a tentacle growing from each front shoulder. Tentacles ridged with razor-sharp edges.

**AC** 4 [15], **HD** 6\* (27hp), **Att** 2 × tentacle (2d4), **THAC0** 14 [+5], **MV** 150' (50'), **SV** D10 W11 P12 B13 S14 (6), **ML** 8, **AL** Neutral, **XP** 500, **NA** 1d4 (1d4), **TT** D

► **Displacement:** Appear 3' from actual location: attackers suffer -2 to hit.

► **Save bonus:** +2 to all saves.

► **Hate blink dogs:** Always attack them and their companions.

## Water Termite

Giant (1'-5' long), wood-eating, aquatic insects with a sack to take in and jet out water. Prone to feeding on passing ships. Only attack creatures if cornered.

► **Irritant spray:** Above water; maximum once a turn. Can spray one target: **save versus poison** or stunned for 1 turn.

► **Ink cloud:** Underwater; maximum once a turn. When escaping, can emit a cloud of black ink to confuse attackers.

► **Eat ships:** Cling to bottom of vessel. Each individual inflicts 1d3 hull damage then drops off.

► **Noticing ship damage:** 50% chance per round of spotting leaks.

## Freshwater Termite

**AC** 6 [13], **HD** 2+1 (10hp), **Att** 1 × bite (1d4) or 1 × spray (stun), **THAC0** 17 [+2], **MV** 120' (40'), **SV** D12 W13 P14 B15 S16 (2), **ML** 8, **AL** Neutral, **XP** 25, **NA** 0 (1d3), **TT** None

## Saltwater Termite

**AC** 5 [14], **HD** 4 (18hp), **Att** 1 × bite (1d6) or 1 × spray (stun), **THAC0** 16 [+3], **MV** 180' (60'), **SV** D12 W13 P14 B15 S16 (3), **ML** 11, **AL** Neutral, **XP** 75, **NA** 0 (1d6+1), **TT** None

## Swamp Termite

**AC** 4 [15], **HD** 1+1 (5hp), **Att** 1 × bite (1d3) or 1 × spray (stun), **THAC0** 18 [+1], **MV** 90' (30'), **SV** D12 W13 P14 B15 S16 (1), **ML** 10, **AL** Neutral, **XP** 15, **NA** 0 (1d4), **TT** None



## Weasel, Giant

8' to 9' long, vicious, predatory mammals with rich fur of brown, gold, or white. Dwell in subterranean tunnels, hunting alone or in small groups.

**AC** 7 [12], **HD** 4+4 (22hp), **Att** 1 × bite (2d4 + blood sucking), **THAC0** 15 [+4], **MV** 150' (50'), **SV** D12 W13 P14 B15 S16 (3), **ML** 8, **AL** Neutral, **XP** 125, **NA** 1d4 (1d6), **TT** V

- **Infravision:** 30'.
- **Blood sucking:** Upon a successful attack, locks onto the victim and drains its blood: 2d4 automatic damage per round.
- **Detaching:** If weasel or victim dies.
- **Tracking:** By scent, favouring wounded prey.
- **Treasure:** Found in lair on bodies of victims.

## Whale

### Killer Whale

25' long, carnivorous whales. Dwell in cold waters and hunt sea creatures (including other whales).

**AC** 6 [13], **HD** 6 (27hp), **Att** 1 × bite (1d20), **THAC0** 14 [+5], **MV** 240' (80'), **SV** D12 W13 P14 B15 S16 (3), **ML** 10, **AL** Neutral, **XP** 275, **NA** 0 (1d6), **TT** V

- **Swallow whole:** A natural 20 attack roll indicates a halfling-sized (or smaller) victim is swallowed. Inside the whale's belly: suffer 1d6 damage per round (until the whale dies); may attack with sharp weapons at -4 to hit; drown after 10 rounds; body digested in 6 turns after death.

### Narwhal

15' long, intelligent, magical whales with grey to white skin and an 8' long, spiralling horn on their nose. Live independent and secretive lives in arctic waters.

**AC** 7 [12], **HD** 12 (54hp), **Att** 1 × bite (1d8), 1 × horn (2d6), **THAC0** 10 [+9], **MV** 180' (60'), **SV** D6 W7 P8 B8 S10 (12), **ML** 8, **AL** Lawful, **XP** 1,100, **NA** 0 (1d4), **TT** Horn

- **Horn:** Is worth 1d6 × 1,000gp. Rumours say a narwhal's horn vibrates when evil is near.

### Sperm Whale

Gargantuan whales up to 60' long. Dwell in open oceans and hunt deep sea monsters (e.g. giant squids).

**AC** 6 [13], **HD** 36 (162hp), **Att** 1 × bite (3d20) or 1 × ram (6d6 hull damage), **THAC0** 5 [+14], **MV** 180' (60'), **SV** D4 W5 P6 B5 S8 (15), **ML** 7, **AL** Neutral, **XP** 6,250, **NA** 0 (1d3), **TT** V

- **Swallow whole:** An attack roll of 4 or more than the target number required indicates a human-sized (or smaller) victim is swallowed. Inside the whale's belly: suffer 3d6 damage per round (until the whale dies); may attack with sharp weapons at -4 to hit; body digested in 6 turns after death.
- **Ram ships:** 10% likely to attack vessels.

## Wight

Corpses of humans or demihumans, possessed by malevolent spirits.

**AC** 5 [14], **HD** 3\* (13hp), **Att** 1 × touch (energy drain), **THAC0** 17 [+2], **MV** 90' (30'), **SV** D12 W13 P14 B15 S16 (3), **ML** 12, **AL** Chaotic, **XP** 50, **NA** 1d6 (1d8), **TT** B

► **Undead:** Make no noise, until they attack. Immune to effects that affect living creatures (e.g. poison). Immune to mind-affecting or mind-reading spells (e.g. *charm*, *hold*, *sleep*).

► **Mundane damage immunity:** Only harmed by silver weapons or magic.

► **Energy drain:** A successfully hit target permanently loses one experience level (or Hit Die). This incurs a loss of one Hit Die of hit points, as well as all other benefits due to the drained level (e.g. spells, saving throws, etc.). A character's XP is reduced to halfway between the former and new levels. A person drained of all levels becomes a wight in 1d4 days, under the control of the wight that killed them.



## Wolf

Carnivorous relatives of dogs that hunt in packs.

### Dire Wolf

Large, savage, semi-intelligent wolves. Dwell in caves, mountains, and forests.

**AC** 6 [13], **HD** 4+1 (19hp), **Att** 1 × bite (2d4), **THAC0** 15 [+4], **MV** 150' (50'), **SV** D12 W13 P14 B15 S16 (2), **ML** 8, **AL** Neutral, **XP** 125, **NA** 1d4 (2d4), **TT** None

► **Training:** At the referee's discretion, captured cubs may be trained like dogs. Dire wolves are ferocious and extremely difficult to train.

► **Mounts:** Sometimes trained as mounts by goblins.

### Normal Wolf

Dwell primarily in wild lands, but occasionally lair in caves.

**AC** 7 [12], **HD** 2+2 (11hp), **Att** 1 × bite (1d6), **THAC0** 17 [+2], **MV** 180' (60'), **SV** D12 W13 P14 B15 S16 (1), **ML** 6 (8 in larger packs), **AL** Neutral, **XP** 25, **NA** 2d6 (3d6), **TT** None

► **Training:** At the referee's discretion, captured cubs may be trained like dogs. Wolves are difficult to train.

► **Strength in numbers:** Packs of 4 or more wolves have morale 8. If the pack is reduced to less than 50% of its original size, this morale bonus is lost.

## Wraith

Incorporeal, undead monsters that appear as pale, human-like forms of coalescing mist. Dwell in deserted regions or in the homes of former victims.

**AC** 3 [16], **HD** 4\*\* (18hp), **Att** 1 × touch (1d6 + energy drain), **THAC0** 16 [+3], **MV** 120' (40') / 240' (80') flying, **SV** D10 W11 P12 B13 S14 (4), **ML** 12, **AL** Chaotic, **XP** 175, **NA** 1d4 (1d6), **TT** E

- **Undead:** Make no noise, until they attack. Immune to effects that affect living creatures (e.g. poison). Immune to mind-affecting or mind-reading spells (e.g. *charm*, *hold*, *sleep*).
- **Mundane damage immunity:** Only harmed by silver weapons or magic.
- **Damage reduction:** Half damage from silver weapons.
- **Energy drain:** A successfully hit target permanently loses one experience level (or Hit Die). This incurs a loss of one Hit Die of hit points, as well as all other benefits due to the drained level (e.g. spells, saving throws, etc.). A character's XP is reduced to the lowest amount for the new level. A person drained of all levels becomes a wraith in one day, under the control of the wraith that killed them.

## Wyvern

Winged, two-legged, dragon-like monsters with a long tail tipped with a venomous stinger. Dwell in any terrain, but favour cliffs and forests.

**AC** 3 [16], **HD** 7\* (31hp), **Att** 1 × bite (2d8), 1 × sting (1d6 + poison), **THAC0** 13 [+6], **MV** 90' (30') / 240' (80') flying, **SV** D10 W11 P12 B13 S14 (4), **ML** 9, **AL** Chaotic, **XP** 850, **NA** 1d2 (1d6), **TT** E

- **Poison:** Causes death (**save vs poison**).

## Yellow Mould

Deadly fungus that covers walls, ceilings, and other surfaces.

**AC** No hit roll required, **HD** 2\* (9hp), **Att** 1 × spores (1d6 + choking), **THAC0** 18 [+1], **MV** 0' (0'), **SV** D12 W13 P14 B15 S16 (2), **ML** 12, **AL** Neutral, **XP** 25, **NA** 1d8 (1d4), **TT** None

- **Area:** Each 10 square feet (e.g. 2' × 5') covered in yellow mould is treated as one "individual". (A 10' × 10' area would consist of 10 individual moulds.)
- **Immunity:** Unharmed by all attacks but fire (a burning torch does 1d4 damage).
- **Spore cloud:** 50% chance of attacking if touched (or damaged): releases a cloud of spores affecting all within a 10' cube area.
- **Choking:** **Save versus death** or die within 6 rounds.
- **Erosion:** Wood or leather in contact with the mould will be eaten away.

## Zombie

Listless, humanoid corpses, reanimated as guardians by powerful clerics or wizards.

**AC** 8 [11], **HD** 2 (9hp), **Att** 1 × weapon (1d8 or by weapon), **THAC0** 18 [+1], **MV** 60' (20'), **SV** D12 W13 P14 B15 S16 (1), **ML** 12, **AL** Chaotic, **XP** 20, **NA** 2d4 (4d6), **TT** None

- **Guardians:** Always attack on sight.
- **Initiative:** Always lose (no roll).
- **Undead:** Make no noise, until they attack. Immune to effects that affect living creatures (e.g. poison). Immune to mind-affecting or mind-reading spells (e.g. *charm*, *hold*, *sleep*).

# ENCOUNTER TABLES

## DUNGEONS

This section provides encounter tables by dungeon level, using the monsters found in this book. Referees who are using additional (or alternative) monsters should either adapt the tables to include these, or should create their own encounter tables. Special tables may also be created to reflect the different balance of monsters inhabiting a specific dungeon.

### How to Roll an Encounter

Roll 1d20 and look up the result on the column in the table below that corresponds to the dungeon level being explored. The result indicates the monster encountered, with the number appearing in parentheses.

#### Dungeon Encounter By Level: 1-3

d20	Level 1	Level 2	Level 3
1	Acolyte (1d8)	Beetle, Oil (1d8)	Ape, White (1d6)
2	Bandit (1d8)	Berserker (1d6)	Basic Adv. (1d4+4)
3	Beetle, Fire (1d8)	Cat, Mntn. Lion (1d4)	Beetle, Tiger (1d6)
4	Dwarf (1d6)	Elf (1d4)	Bugbear (2d4)
5	Gnome (1d6)	Ghoul (1d6)	Carcass Crawler (1d3)
6	Goblin (2d4)	Gnoll (1d6)	Doppelgänger (1d6)
7	Green Slime (1d4)	Grey Ooze (1)	Driver Ant (2d4)
8	Halfling (3d6)	Hobgoblin (1d6)	Gargoyle (1d6)
9	Killer Bee (1d10)	Lizard, Draco (1d4)	Gelatinous Cube (1)
10	Kobold (4d4)	Lizard Man (2d4)	Harpy (1d6)
11	Lizard, Gecko (1d3)	Neanderthal (1d10)	Lyng. Stat., Crystal (1d6)
12	Orc (2d4)	Noble (2d6)	Lycan., Wererat (1d8)
13	Shrew, Giant (1d10)	Pixie (2d4)	Medium (1d4)
14	Skeleton (3d4)	Robber Fly (1d6)	Medusa (1d3)
15	Snake, Cobra (1d6)	Rock Baboon (2d6)	Ochre Jelly (1)
16	Spider, Crab (1d4)	Snake, Pit Viper (1d8)	Ogre (1d6)
17	Sprite (3d6)	Spider, Bl. Widow (1d3)	Shadow (1d8)
18	Stirge (1d10)	Troglodyte (1d8)	Spider, Tarantella (1d3)
19	Trader (1d8)	Veteran (2d4)	Thoul (1d6)
20	Wolf (2d6)	Zombie (2d4)	Wight (1d6)

## Notes

**NPC adventurers:** Encounters with NPC adventuring parties are listed in the tables as “Basic Adventurers” or “Expert Adventurers”. Guidelines for generating NPC adventurers can be found under *Adventuring Parties*, p82.

**Number appearing:** The values listed in the tables for some monsters do not match the values listed in the monster description. If desired, the referee may use the number appearing value listed in the monster description, for consistency.



## Dungeon Encounter By Level: 4+

d20	Level 4-5	Level 6-7	Level 8+
1	Bear, Cave (1d2)	Basilisk (1d6)	Black Pudding (1)
2	Blink Dog (1d6)	Bear, Cave (1d2)	Chimera (1d2)
3	Caecilia (1d3)	Black Pudding (1)	Dragon, Black (1d4)
4	Cockatrice (1d4)	Caecilia (1d3)	Dragon, Blue (1d4)
5	Doppelgänger (1d6)	Dragon, White (1d4)	Dragon, Gold (1d4)
6	Exp. Adv. (1d6+3)	Exp. Adv. (1d6+3)	Dragon, Green (1d4)
7	Grey Ooze (1)	Gorgon (1d2)	Dragon, Red (1d4)
8	Hellhound (2d4)	Hellhound (2d4)	Exp. Adv. (1d6+3)
9	Lizard, Tuatara (1d2)	Hydra, 1d4+4HD (1)	Giant, Hill (1d4)
10	Lycan., Wereboar (1d4)	Lycan., Weretiger (1d4)	Giant, Stone (1d2)
11	Lycan., Werewolf (1d6)	Minotaur (1d6)	Golem, Amber (1)
12	Minotaur (1d6)	Mummy (1d4)	Golem, Bone (1)
13	Ochre Jelly (1)	Ochre Jelly (1)	Hydra, 1d4+8HD (1)
14	Owl Bear (1d4)	Owl Bear (1d4)	Lycan., Devil Swine (1d3)
15	Rhagodessa (1d4)	Rust Monster (1d4)	Lycan., Werebear (1d4)
16	Rust Monster (1d4)	Salam., Flame (1d4+1)	Manticore (1d2)
17	Spectre (1d4)	Scorpion, Giant (1d6)	Purple Worm (1d2)
18	Troll (1d8)	Spectre (1d4)	Salam., Flame (1d4+1)
19	Weasel, Giant (1d4)	Troll (1d8)	Salamander, Frost (1d3)
20	Wraith (1d4)	Warp Beast (1d4)	Vampire (1d4)

# WILDERNESS

This section provides encounter tables by terrain type, using the monsters found in this book. Referees who are using additional (or alternative) monsters should either adapt the tables to include these, or should create their own encounter tables.

## How to Roll an Encounter

Roll 1d8 and 1d12:

- ▶ Look up the d8 result on the column in the table below that corresponds to the terrain being explored. The result indicates which sub-table to consult.
- ▶ Look up the d12 result in the sub-table indicated.

## Notes

**Aerial encounters:** Always use the *Flyer* table, in sub-table 1, opposite.

**Lost World:** In Lost World or prehistoric settings, any Animal result may be rolled on the *Prehistoric Animal* table, in sub-table 2, opposite.

**NPC adventurers:** Encounters with NPC adventuring parties are listed in the tables as “Basic Adventurers”, “Expert Adventurers”, “High-Level Cleric”, “High-Level Fighter”, or “High-Level Magic-User”. Guidelines for generating NPC adventurers can be found under *Adventuring Parties*, p82.

## Wilderness Encounter By Terrain

d8	Barren, Hills, Mountains	City	Clear, Grasslands	Desert	Forest
1	B—Animal	C—Human	G—Animal	D—Animal	F—Animal
2	1—Dragon	C—Human	G—Animal	D—Animal	F—Animal
3	1—Dragon	C—Human	1—Dragon	1—Dragon	1—Dragon
4	B—Flyer	C—Human	1—Flyer	D—Flyer	1—Flyer
5	B—Human	C—Human	G—Human	D—Human	F—Human
6	B—Humanoid	C—Human	G—Humanoid	D—Human	F—Humanoid
7	B—Humanoid	C—Humanoid	1—Insect	D—Humanoid	1—Insect
8	2—Unusual	2—Undead	2—Unusual	2—Undead	2—Unusual
d8	Jungle	Lake, River	Ocean, Sea	Settled	Swamp
1	J—Animal	L—Animal	1—Dragon	C—Animal	1—Dragon
2	J—Animal	1—Dragon	1—Flyer	1—Dragon	1—Flyer
3	1—Dragon	1—Flyer	O—Human	1—Flyer	S—Human
4	1—Flyer	L—Human	O—Swimmer	C—Human	S—Humanoid
5	J—Human	L—Humanoid	O—Swimmer	C—Human	1—Insect
6	J—Humanoid	1—Insect	O—Swimmer	C—Human	S—Swimmer
7	1—Insect	L—Swimmer	O—Swimmer	C—Humanoid	2—Undead
8	1—Insect	L—Swimmer	O—Swimmer	1—Insect	2—Undead



**Wilderness Encounter Sub-Table 1**

d12	Dragon	Flyer	Insect
1	Chimera	Cockatrice	Beetle, Fire
2	Dragon, Black	Gargoyle	Beetle, Oil
3	Dragon, Blue	Griffon	Beetle, Tiger
4	Dragon, Gold	Hawk, Giant	Driver Ant
5	Dragon, Green	Hippogriff	Driver Ant
6	Dragon, Red	Killer Bee	Killer Bee
7	Dragon, White	Pegasus	Rhagodessa
8	Hydra (or Sea Hydra)	Pixie	Robber Fly
9	Hydra (or Sea Hydra)	Robber Fly	Scorpion, Giant
10	Wyvern	Roc, Small	Spider, Black Widow
11	Basilisk*	Sprite	Spider, Crab
12	Salamander*	Stirge	Spider, Tarantella

\* Re-roll at sea.

**Wilderness Encounter Sub-Table 2**

d12	Prehistoric Animal	Undead	Unusual
1	Bear, Cave	Ghoul	Basilisk
2	Cat, Sabre-Toothed	Ghoul	Blink Dog
3	Crocodile, Giant	Ghoul	Centaur
4	Mastodon	Mummy	Gorgon
5	Pterosaur, Pteranodon	Skeleton	Lycanthrope, Werebear
6	Rhino, Woolly	Skeleton	Lycanthrope, Wereboar
7	Snake, Pit Viper	Spectre	Lycanthrope, Wererat
8	Stegosaurus	Wight	Lycanthrope, Weretiger
9	Titanotheres	Wraith	Lycanthrope, Werewolf
10	Triceratops	Vampire	Medusa
11	Tyrannosaurus Rex	Zombie	Treant
12	Wolf, Dire	Zombie	Warp Beast

### Wilderness Encounter Sub-Table B: Barren, Hills, Mountains

d12	Animal	Flyer	Human	Humanoid
1	Ape, White	Gargoyle	Bandit	Dwarf
2	Ape, White	Griffon	Berserker	Giant, Cloud
3	Bear, Cave	Harpy	Berserker	Giant, Frost
4	Cat, Mntn. Lion	Hawk	Brigand	Giant, Hill
5	Hawk	Hawk, Giant	Brigand	Giant, Stone
6	Herd Animal	Hippogriff	Exp. Adventurers	Giant, Storm
7	Mule	Manticore	High-Level Cleric	Gnome
8	Rock Baboon	Manticore	High-Level Fighter	Goblin
9	Snake, Pit Viper	Pegasus	High-Level MU	Kobold
10	Snake, Rattler	Roc, Small	Merchant	Orc
11	Wolf	Roc, Large	Neanderthal	Troglodyte
12	Wolf, Dire	Roc, Giant	Neanderthal	Troll

### Wilderness Encounter Sub-Table C: City, Settled

d12	Animal	Human, City	Human, Settled	Humanoid
1	Boar	Acolyte	Acolyte	Dwarf
2	Cat, Tiger	Basic Adventurers	Basic Adventurers	Elf
3	Ferret, Giant	Bandit	Bandit	Giant, Hill
4	Hawk	Bandit	Bandit	Gnome
5	Herd Animal	Exp. Adventurers	Exp. Adventurers	Gnoll
6	Herd Animal	High-Level Fighter	High-Level Cleric	Goblin
7	Rat, Giant	Merchant	High-Level Fighter	Halfling
8	Shrew, Giant	Noble	High-Level MU	Hobgoblin
9	Snake, Pit Viper	Trader	Merchant	Ogre
10	Spider, Tarantella	Trader	Noble	Orc
11	Weasel, Giant	Trader	Trader	Pixie
12	Wolf	Veteran	Veteran	Sprite

### Wilderness Encounter Sub-Table D: Desert

d12	Animal	Flyer	Human	Humanoid
1	Camel	Gargoyle	Exp. Adventurers	Giant, Fire
2	Camel	Gargoyle	High-Level Cleric	Goblin
3	Cat, Lion	Griffon	Dervish	Hobgoblin
4	Cat, Lion	Hawk	Dervish	Hobgoblin
5	Hawk	Hawk, Giant	High-Level Fighter	Ogre
6	Herd Animal	Hawk, Giant	High-Level MU	Ogre
7	Herd Animal	Manticore	Merchant	Ogre
8	Lizard, Gecko	Manticore	Noble	Orc
9	Lizard, Tuatara	Manticore	Nomad	Orc
10	Snake, Pit Viper	Roc, Small	Nomad	Pixie
11	Snake, Rattler	Roc, Large	Nomad	Sprite
12	Spider, Tarantella	Roc, Giant	Nomad	Thoul

**Wilderness Encounter Sub-Table F: Forest**

<b>d12</b>	<b>Animal</b>	<b>Human</b>	<b>Humanoid</b>
1	Boar	Basic Adventurers	Bugbear
2	Cat, Panther	Bandit	Cyclops
3	Cat, Tiger	Bandit	Dryad
4	Hawk	Berserker	Elf
5	Herd Animal	Brigand	Giant, Hill
6	Lizard, Gecko	Brigand	Gnoll
7	Lizard, Tuatara	Brigand	Goblin
8	Snake, Pit Viper	Expert Adventurers	Hobgoblin
9	Spider, Crab	High-Level Cleric	Ogre
10	Unicorn	High-Level Fighter	Orc
11	Wolf	High-Level Magic-User	Thoul
12	Wolf, Dire	Merchant	Troll

**Wilderness Encounter Sub-Table G: Clear, Grasslands**

<b>d12</b>	<b>Animal</b>	<b>Human</b>	<b>Humanoid</b>
1	Boar	Bandit	Bugbear
2	Cat, Lion	Bandit	Elf
3	Elephant	Berserker	Giant, Hill
4	Ferret, Giant	Brigand	Gnoll
5	Hawk, Giant	Expert Adventurers	Goblin
6	Herd Animal	High-Level Cleric	Halfling
7	Horse, Wild	High-Level Fighter	Hobgoblin
8	Mule	High-Level Magic-User	Ogre
9	Rock Baboon	Merchant	Orc
10	Snake, Pit Viper	Merchant	Pixie
11	Snake, Rattler	Noble	Thoul
12	Weasel, Giant	Nomad	Troll

**Wilderness Encounter Sub-Table J: Jungle**

<b>d12</b>	<b>Animal</b>	<b>Human</b>	<b>Humanoid</b>
1	Boar	Bandit	Bugbear
2	Cat, Panther	Berserker	Cyclops
3	Herd Animal	Brigand	Elf
4	Lizard, Draco	Brigand	Giant, Fire
5	Lizard, Gecko	Brigand	Giant, Hill
6	Lzd., Horned Chameleon	Expert Adventurers	Gnoll
7	Rat, Giant	Expert Adventurers	Goblin
8	Shrew, Giant	High-Level Cleric	Lizard Man
9	Snake, Pit Viper	High-Level Fighter	Ogre
10	Snake, Rock Python	High-Level Magic-User	Orc
11	Snake, Spitting Cobra	Merchant	Troglodyte
12	Spider, Crab	Neanderthal	Troll

### Wilderness Encounter Sub-Table L: Lake, River

d12	Animal	Human	Humanoid	Swimmer
1	Boar	Basic Adventurers	Bugbear	Crab, Giant
2	Cat, Panther	Bandit	Elf	Crocodile
3	Cat, Tiger	Brigand	Gnoll	Crocodile
4	Crab, Giant	Buccaneer	Hobgoblin	Crocodile, Large
5	Crocodile	Buccaneer	Lizard Man	Fish, Catfish
6	Crocodile, Large	Buccaneer	Lizard Man	Fish, Piranha
7	Fish, Piranha	Exp. Adventurers	Nixie	Fish, Sturgeon
8	Herd Animal	High-Level Cleric	Ogre	Leech, Giant
9	Leech, Giant	High-Level Fighter	Orc	Lizard Man
10	Rat, Giant	High-Level MU	Sprite	Merman
11	Shrew, Giant	Merchant	Thoul	Nixie
12	Toad, Giant	Merchant	Troll	Termite, Water



### Wilderness Encounter Sub-Table O: Ocean, Sea

d12	Human	Swimmer
1	Buccaneer	Dragon Turtle
2	Buccaneer	Hydra, Sea
3	Exp. Adventurers	Merman
4	Merchant	Octopus, Giant
5	Merchant	Sea Dragon
6	Merchant	Sea Serpent
7	Merchant	Shark
8	Merchant	Shark
9	Pirate	Snake, Sea
10	Pirate	Squid, Giant
11	Pirate	Termite, Water
12	Pirate	Whale

### Wilderness Encounter Sub-Table S: Swamp

d12	Human	Humanoid	Swimmer
1	Basic Adventurers	Gnoll	Crab, Giant
2	Bandit	Goblin	Crocodile
3	Bandit	Hobgoblin	Crocodile, Large
4	Berserker	Lizard Man	Crocodile, Giant
5	Brigand	Lizard Man	Fish, Catfish
6	Expert Adventurers	Lizard Man	Insect Swarm
7	Expert Adventurers	Nixie	Insect Swarm
8	High-Level Cleric	Ogre	Leech, Giant
9	High-Level Fighter	Orc	Leech, Giant
10	High-Level Magic-User	Troglodyte	Lizard Man
11	Merchant	Troll	Lizard Man
12	Trader	Troll	Termite, Water



# NPC ENCOUNTERS

## ADVENTURING PARTIES

This procedure generates parties of NPC adventurers. As the procedure is fairly involved, referees may wish to pre-generate some NPC parties for use in random encounters. The following general details apply to all types of NPC parties described:

- ▶ **Spells:** If spell casters are present, choose or roll their memorized spells.
- ▶ **Equipment:** Normal adventuring gear.
- ▶ **Treasure:** Treasure types U+V, shared among the group.
- ▶ **Marching order:** Decided by referee.

If the classes presented in this book are not in use, the referee should replace the listed classes by equivalents in use in the campaign.

### NPC Adventurer Class and Level

d8	Class	Level	
		Basic	Expert
1	Cleric	1d3	1d6+3
2	Dwarf	1d3	1d6+6
3	Elf	1d3	1d6+2
4	Fighter	1d3	1d6+3
5	Fighter	1d3	1d6+5
6	Halfling	1d3	1d6+2
7	Magic-User	1d3	1d6+3
8	Thief	1d3	1d6+4

### Basic Adventurers

- ▶ **Composition:** 1d4+4 characters of random class and level (see below).
- ▶ **Alignment:** Either roll the alignment of each NPC or roll once for the party.

### Expert Adventurers

- ▶ **Composition:** 1d6+3 characters of random class and level (see below).
- ▶ **Alignment:** Either roll the alignment of each NPC or roll once for the party.
- ▶ **Mounts:** 75% chance of being mounted, in the wilderness.
- ▶ **Magic items:** Per individual: there is a chance of the NPC having a magic item from each suitable magic item sub-table (see *Magic Items* in *Classic Fantasy Treasures*). The chance per sub-table is 5% per level of the NPC. Rolled items that cannot be used by the NPC should be ignored (no re-roll).

### NPC Adventurer Alignment

d6	Alignment
1–2	Lawful
3–4	Neutral
5–6	Chaotic

## High-Level Cleric

A high-level cleric and party. (Mounts and magic items as per *Expert Adventurers*.)

- **Composition:** Leader (cleric of level  $1d6+6$ ), 1d4 clerics (level  $1d4+1$ ), 1d3 fighters (level  $1d6$ ).
- **Alignment:** Roll for the whole party.

## High-Level Fighter

A high-level fighter and a group of retainers, often on their way to or from war. (Mounts and magic items as per *Expert Adventurers*.)

- **Composition:** Leader (fighter of level  $1d4+6$ ), 2d4 retainers (level  $1d4+2$ , any class).
- **Alignment:** Roll for the whole party.

## High-Level Magic-User

A high-level magic-user, accompanied by their apprentices and a group of hired guards, often on a quest for arcane lore. (Mounts and magic items as per *Expert Adventurers*.)

- **Composition:** Leader (magic-user of level  $1d4+6$ ), 1d4 apprentices (magic-users of level  $1d3$ ), 1d4 mercenaries (fighters of level  $1d4+1$ ).
- **Alignment:** Roll the leader's alignment. The apprentices have the same alignment as the leader, but the mercenaries may be of different alignment.



# STRONGHOLDS

When PCs wander into the vicinity of the wilderness stronghold of a high-level NPC, a warm reception is not always guaranteed. These guidelines may be used if the referee does not have specific notes on a stronghold's ruler and guard patrols.

## Ruler

The referee should decide what class of NPC claims ownership of the stronghold and the surrounding lands:

- **Cleric:** Of level 1d8+6.
- **Fighter:** Of level 1d6+8.
- **Magic-user:** Of level 1d4+10.

Demihuman strongholds are unusual cases, and should be detailed in advance by the referee. Typically, they will attempt to avoid all contact with travellers.

## Patrols

Strangers in the lands around a stronghold will typically be spotted by mercenary groups hired to patrol the lands. The type of troops depends on the ruler's class:

- **Cleric:** 2d6 medium horsemen. Equipped with chainmail (AC 5 [14]) and lances. Morale 9.
- **Fighter:** 2d6 heavy horsemen. Equipped with plate mail (AC 3 [16]), lances, and swords. Morale 9.
- **Magic-user:** 2d6 heavy footmen. Equipped with chainmail + shield (AC 4 [15]) and swords. Morale 8.

## Garrison

Patrols such as those described are only a small part of the ruler's garrison. Further forces may include magical monsters or humans mounted on flying creatures.

## Reaction to Travellers

The reaction of the ruler to travellers in their domain depends on the class of the ruler and can be determined by rolling 1d6 and consulting this table:

### Ruler Reaction By Class

d6	Cleric	Fighter	Magic-User
1	Chase	Chase	Chase
2	Chase	Chase	Ignore
3	Ignore	Chase	Ignore
4	Ignore	Ignore	Ignore
5	Invite	Ignore	Ignore
6	Invite	Invite	Invite

**Chase:** The patrol is instructed to chase intruders out of the domain. Alternatively, they may demand a toll from travellers passing through. The exact price demanded depends on the ruler's character, the apparent wealth of the PCs, etc. If the PCs refuse to pay the toll, the patrol may attack them, drive them away, or attempt to take them prisoner.

**Ignore:** The patrol leaves the PCs to go about their business.

**Invite:** The patrol brings a message from the domain's ruler, inviting the PCs to stay in the stronghold. The ruler's exact motive for doing so will depend on their personality—it is not necessarily benign.





# OPEN GAME LICENSE

## DESIGNATION OF PRODUCT IDENTITY

All artwork, logos, and presentation are product identity. The names “Necrotic Gnome” and “Old-School Essentials” are product identity. All text in the following sections is product identity: Introduction.

## DESIGNATION OF OPEN GAME CONTENT

All text and tables not declared as product identity are Open Game Content.

### OPEN GAME LICENSE Version 1.0a

The following text is the property of Wizards of the Coast, Inc. and is Copyright 2000 Wizards of the Coast, Inc (“Wizards”). All Rights Reserved.

1. Definitions: (a) “Contributors” means the copyright and/or trademark owners who have contributed Open Game Content; (b) “Derivative Material” means copyrighted material including derivative works and translations (including into other computer languages), potation, modification, correction, addition, extension, upgrade, improvement, compilation, abridgment or other form in which an existing work may be recast, transformed or adapted; (c) “Distribute” means to reproduce, license, rent, lease, sell, broadcast, publicly display, transmit or otherwise distribute; (d) “Open Game Content” means the game mechanic and includes the methods, procedures, processes and routines to the extent such content does not embody the Product Identity and is an enhancement over the prior art and any additional content clearly identified as Open Game Content by the Contributor, and means any work covered by this License, including translations and derivative works under copyright law, but specifically excludes Product Identity. (e) “Product Identity” means product and product line names, logos and identifying marks including trade dress; artifacts; creatures characters; stories, storylines, plots, thematic elements, dialogue, incidents, language, artwork, symbols, designs, depictions, likenesses, formats, poses, concepts, themes and graphic, photographic and other visual or audio representations; names and descriptions of characters, spells, enchantments, personalities, teams, personas, likenesses and special abilities; places, locations, environments, creatures, equipment, magical or supernatural abilities or effects, logos, symbols, or graphic designs; and any other trademark or registered trademark clearly identified as Product identity by the owner of the Product Identity, and which specifically excludes the Open Game Content; (f) “Trademark” means the logos, names, mark,

sign, motto, designs that are used by a Contributor to identify itself or its products or the associated products contributed to the Open Game License by the Contributor (g) “Use”, “Used” or “Using” means to use, Distribute, copy, edit, format, modify, translate and otherwise create Derivative Material of Open Game Content. (h) “You” or “Your” means the licensee in terms of this agreement.

2. The License: This License applies to any Open Game Content that contains a notice indicating that the Open Game Content may only be Used under and in terms of this License. You must affix such a notice to any Open Game Content that you Use. No terms may be added to or subtracted from this License except as described by the License itself. No other terms or conditions may be applied to any Open Game Content distributed using this License.

3. Offer and Acceptance: By Using the Open Game Content You indicate Your acceptance of the terms of this License.

4. Grant and Consideration: In consideration for agreeing to use this License, the Contributors grant You a perpetual, worldwide, royalty-free, non-exclusive license with the exact terms of this License to Use, the Open Game Content.

5. Representation of Authority to Contribute: If You are contributing original material as Open Game Content, You represent that Your Contributions are Your original creation and/or You have sufficient rights to grant the rights conveyed by this License.

6. Notice of License Copyright: You must update the COPYRIGHT NOTICE portion of this License to include the exact text of the COPYRIGHT NOTICE of any Open Game Content You are copying, modifying or distributing, and You must add the title, the copyright date, and the copyright holder’s name to the COPYRIGHT NOTICE of any original Open Game Content you Distribute.

7. Use of Product Identity: You agree not to Use any Product Identity, including as an indication as to compatibility, except as expressly licensed in another, independent Agreement with the owner of each element of that Product Identity. You agree not to indicate compatibility or co-adaptability with any Trademark or Registered Trademark in conjunction with a work containing Open Game Content except as expressly licensed in another, independent Agreement with the owner of such Trademark or Registered Trademark. The use of any Product

Identity in Open Game Content does not constitute a challenge to the ownership of that Product Identity. The owner of any Product Identity used in Open Game Content shall retain all rights, title and interest in and to that Product Identity.

8. Identification: If you distribute Open Game Content You must clearly indicate which portions of the work that you are distributing are Open Game Content.

9. Updating the License: Wizards or its designated Agents may publish updated versions of this License. You may use any authorized version of this License to copy, modify and distribute any Open Game Content originally distributed under any version of this License.

10 Copy of this License: You MUST include a copy of this License with every copy of the Open Game Content You Distribute.

11. Use of Contributor Credits: You may not market or advertise the Open Game Content using the name of any Contributor unless You have written permission from the Contributor to do so.

12 Inability to Comply: If it is impossible for You to comply with any of the terms of this License with respect to some or all of the Open Game Content due to statute, judicial order, or governmental regulation then You may not Use any Open Game Material so affected.

13 Termination: This License will terminate automatically if You fail to comply with all terms herein and fail to cure such breach within 30 days of becoming aware of the breach. All sublicenses shall survive the termination of this License.

14 Reformation: If any provision of this License is held to be unenforceable, such provision shall be reformed only to the extent necessary to make it enforceable.

## 15 COPYRIGHT NOTICE

Open Game License v 1.0 © 2000, Wizards of the Coast, Inc.

System Reference Document © 2000, Wizards of the Coast, Inc.; Authors Jonathan Tweet, Monte Cook, Skip Williams, based on original material by E. Gary Gygax and Dave Arneson.

System Reference Document © 2000-2003, Wizards of the Coast, Inc.; Authors Jonathan Tweet, Monte Cook, Skip Williams, Rich Baker, Andy Collins, David Noonan, Rich Redman, Bruce R. Cordell, John D. Rateliff, Thomas Reid, James Wyatt, based on original material by E. Gary Gygax and Dave Arneson.

Modern System Reference Document © 2002-2004, Wizards of the Coast, Inc.; Authors Bill Slavicsek, Jeff Grubb, Rich Redman, Charles Ryan, Eric Cagle, David Noonan, Stan!, Christopher Perkins, Rodney Thompson, and JD Wiker, based on material by Jonathan Tweet, Monte Cook, Skip Williams, Richard

Baker, Peter Adkison, Bruce R. Cordell, John Tynes, Andy Collins, and JD Wiker.

Castles & Crusades: Players Handbook, © 2004, Troll Lord Games; Authors Davis Chenault and Mac Golden.

Cave Cricket from the Tome of Horrors, © 2002, Necromancer Games, Inc.; Authors Scott Greene and Clark Peterson, based on original material by Gary Gygax.

Crab, Monstrous from the Tome of Horrors, © 2002, Necromancer Games, Inc.; Author Scott Greene, based on original material by Gary Gygax.

Fly, Giant from the Tome of Horrors, © 2002, Necromancer Games, Inc.; Author Scott Greene, based on original material by Gary Gygax.

Golem, Wood from the Tome of Horrors, © 2002, Necromancer Games, Inc.; Authors Scott Greene and Patrick Lawinger.

Kamadan from the Tome of Horrors, © 2002, Necromancer Games, Inc.; Author Scott Greene, based on original material by Nick Louth.

Rot Grub from the Tome of Horrors, © 2002, Necromancer Games, Inc.; Authors Scott Greene and Clark Peterson, based on original material by Gary Gygax.

Labyrinth Lord™ © 2007-2009, Daniel Proctor. Author Daniel Proctor.

B/X Essentials: Core Rules © 2017 Gavin Norman. Author Gavin Norman.

B/X Essentials: Classes and Equipment © 2017 Gavin Norman. Author Gavin Norman.

B/X Essentials: Cleric and Magic-User Spells © 2017 Gavin Norman. Author Gavin Norman.

B/X Essentials: Monsters © 2017 Gavin Norman. Author Gavin Norman.

B/X Essentials: Adventures and Treasures © 2018 Gavin Norman. Author Gavin Norman.

Old-School Essentials Core Rules © 2018 Gavin Norman.

Old-School Essentials Classic Fantasy: Genre Rules © 2018 Gavin Norman.

Old-School Essentials Classic Fantasy: Cleric and Magic-User Spells © 2018 Gavin Norman.

Old-School Essentials Classic Fantasy: Monsters © 2018 Gavin Norman.

Old-School Essentials Classic Fantasy: Treasures © 2018 Gavin Norman.

Old-School Essentials Classic Fantasy: Rules Tome © 2019 Gavin Norman.

Old-School Essentials Classic Game Set: Classic Fantasy: Monsters © 2021 Gavin Norman.

END OF LICENSE

# INDEX OF MONSTERS

Acolyte	6	Elemental	26	Manticore	45	Shark	58
Ape, White	6	Elephant	27	Mastodon	45	Shrew, Giant	59
Bandit	6	Elf	27	Medium	46	Shrieker	59
Basilisk	7	Ferret, Giant	27	Medusa	46	Skeleton	59
Bat	7	Fish, Giant	28	Merchant	46	Snake	60
Bear	8	Gargoyle	29	Merman	47	Spectre	61
Beetle, Giant	9	Gelatinous Cube	29	Minotaur	47	Spider, Giant	62
Berserker	9	Ghoul	30	Mule	47	Sprite	62
Black Pudding	9	Giant	30	Mummy	47	Squid, Giant	63
Blink Dog	10	Gnoll	31	Neanderthal	50	Stegosaurus	63
Boar	10	Gnome	31	Nixie	50	Stirge	63
Brigand	10	Goblin	32	Noble	50	Thoul	64
Buccaneer	11	Golem	32	Nomad	51	Titanotheres	64
Bugbear	11	Gorgon	33	Normal Human	51	Toad, Giant	64
Caecilia	11	Green Slime	36	Ochre Jelly	51	Trader	64
Camel	11	Grey Ooze	36	Octopus, Giant	52	Treant	65
Carcass Crawler	12	Griffon	36	Ogre	52	Triceratops	65
Cat, Great	12	Halfling	37	Orc	52	Troglodyte	65
Cave Locust	13	Harpy	37	Owl Bear	53	Troll	65
Centaur	13	Hawk	37	Pegasus	53	T-Rex	68
Centipede, Giant	13	Hellhound	38	Pirate	53	Unicorn	68
Chimera	16	Herd Animal	38	Pixie	54	Vampire	69
Cockatrice	16	Hippogriff	38	Pterosaur	54	Veteran	70
Crab, Giant	16	Hobgoblin	39	Purple Worm	54	Warp Beast	70
Crocodile	17	Horse	39	Rat	55	Water Termite	70
Cyclops	18	Hydra	40	Rhagodessa	55	Weasel, Giant	71
Dervish	18	Insect Swarm	40	Rhinoceros	56	Whale	71
Djinni (Lesser)	19	Invisible Stalker	40	Robber Fly	56	Wight	72
Doppelgänger	19	Killer Bee	41	Roc	56	Wolf	72
Dragon	20	Kobold	41	Rock Baboon	57	Wraith	73
Dragon Turtle	24	Leech, Giant	41	Rust Monster	57	Wyvern	73
Driver Ant	24	Living Statue	42	Salamander	57	Yellow Mould	73
Dryad	25	Lizard, Giant	43	Scorpion, Giant	58	Zombie	73
Dwarf	25	Lizard Man	43	Sea Serpent	58		
Efreeti (Lesser)	25	Lycanthrope	44	Shadow	58		



# OLD-SCHOOL ESSENTIALS

## CLASSIC FANTASY

### Monsters

A horde of more than 200 fearsome monsters to challenge characters of all levels!

- **Bestiary:** Dragons and dinosaurs, golems and giants, slimes and oozes, beast-men and unholy spirits, animals monstrous and mundane.
- **Encounter tables:** Complete encounter tables for dungeon levels 1–8+ and all types of wilderness terrain.
- **NPC encounters:** Procedures for generating parties of adventurers and stronghold patrols.



NECROTIC  
GNOME



EXALTED  
FUNERAL

Classic Game Set v1.1



## Attack Matrix

Monster HD	THACO	Attack Roll to Hit AC												
		-3	-2	-1	0	1	2	3	4	5	6	7	8	9
Normal H	20 [-1]	20	20	20	20	19	18	17	16	15	14	13	12	11
Up to 1	19 [0]	20	20	20	19	18	17	16	15	14	13	12	11	10
1+ to 2	18 [+1]	20	20	19	18	17	16	15	14	13	12	11	10	9
2+ to 3	17 [+2]	20	19	18	17	16	15	14	13	12	11	10	9	8
3+ to 4	16 [+3]	19	18	17	16	15	14	13	12	11	10	9	8	7
4+ to 5	15 [+4]	18	17	16	15	14	13	12	11	10	9	8	7	6
5+ to 6	14 [+5]	17	16	15	14	13	12	11	10	9	8	7	6	5
6+ to 7	13 [+6]	16	15	14	13	12	11	10	9	8	7	6	5	4
7+ to 9	12 [+7]	15	14	13	12	11	10	9	8	7	6	5	4	3
9+ to 11	11 [+8]	14	13	12	11	10	9	8	7	6	5	4	3	2
11+ to 13	10 [+9]	13	12	11	10	9	8	7	6	5	4	3	2	2
13+ to 15	9 [+10]	12	11	10	9	8	7	6	5	4	3	2	2	2
15+ to 17	8 [+11]	11	10	9	8	7	6	5	4	3	2	2	2	2
17+ to 19	7 [+12]	10	9	8	7	6	5	4	3	2	2	2	2	2
19+ to 21	6 [+13]	9	8	7	6	5	4	3	2	2	2	2	2	2
21+ or >	5 [+14]	8	7	6	5	4	3	2	2	2	2	2	2	2

## Monster Saving Throws

Hit Dice	Death	Wands	Paralysis	Breath	Spells
Normal Human	14	15	16	17	18
1-3	12	13	14	15	16
4-6	10	11	12	13	14
7-9	8	9	10	10	12
10-12	6	7	8	8	10
13-15	4	5	6	5	8
16-18	2	3	4	3	6
19-21	2	2	2	2	4
22 or more	2	2	2	2	2

## Monster Morale: Roll 2d6

**Result:** Higher than morale score: monster surrenders or flees.

**When to check:** First death on side; side half incapacitated.

**Morale scores of 2 or 12:** Never check morale. Score of 2: Never fights. Score of 12: Fights to the death.

## Monster Reactions: Roll 2d6

**CHA modifier:** Of interacting PC applies.

### Monster Reaction Roll

2d6	Result
2 or less	Hostile, attacks
3-5	Unfriendly, may attack
6-8	Neutral, uncertain
9-11	Indifferent, uninterested
12 or more	Friendly, helpful

## Game Statistics

### Armour Class (AC)

The monster's ability to avoid damage.

**Ascending AC:** The optional AAC score is listed afterwards in square brackets.

### Hit Dice (HD)

The number of d8s rolled to determine an individual's hit points.

**Asterisks:** The number of special abilities the monster has, for XP calculation.

**Modifiers:** Modifiers to the HD (e.g. +3, -1) are applied after rolling hit points.

**Fractional Hit Dice:** Some monsters are listed as having less than one HD, either as  $\frac{1}{2}$  (roll 1d4) or as a fixed number of hp.

**Average hit points:** The average hit point value is listed in parentheses.

### Attacks Usable Per Round (Att)

The attacks that the monster can use each round, with the inflicted damage in parentheses.

**Alternative attack routines:** Square brackets are used to distinguish between alternative attack routines that a monster may choose from.

### Saving Throw Values (SV)

The monster's saving throw values: **D:** Death/poison; **W:** Wands; **P:** Paralysis/petrification; **B:** Breath attacks; **S:** Spells/rods/staves.

**Save as HD:** The HD at which the monster saves is listed in parentheses (NH indicates that it saves as a normal human).

### Attack Roll "to Hit AC 0" (THACO)

The monster's ability to hit in combat, indicating which row of the attack matrix it uses when attacking.

**Attack bonus:** The monster's attack bonus (required when using the optional rule for Ascending AC) is listed afterwards in square brackets.

### Movement Rate (MV)

The speed at which the monster can move. (Encounter movement rate noted in parentheses.)

**Modes of movement:** If the monster has multiple modes of movement (e.g. walking, flying, climbing), they are listed individually, separated by slashes.

### Morale Rating (ML)

The monster's likelihood to flee in battle.

### Alignment (AL)

The monster's affiliation to Law, Neutrality, or Chaos.

### XP Award (XP)

Pre-calculated XP award for the monster.

### Number Appearing (NA)

The number of monsters encountered in the dungeon or wilderness/lairs.

### Treasure Type (TT)

The letter code used to determine the treasure possessed by the monster(s).

## Infravision

All non-human monsters have infravision to 60' (unless specified otherwise).

## Languages

20% of intelligent monsters speak Common (unless specified otherwise).

## Persons

The following monsters in this book are classified as "persons", for the sake of magical effects: acolyte, bandit, berserker, brigand, buccaneer, bugbear, dervish, dryad, dwarf, elf, gnoll, gnome, goblin, halfling, hobgoblin, kobold, lizard man, medium, merchant, merman, neanderthal, nixie, noble, nomad, normal human, ogre, orc, pirate, pixie, sprite, trader, troglodyte, veteran.

## Less than 1 HD

Bat, normal  
Centipede, giant  
Goblin  
Halfling  
Hawk  
Killer bee  
Kobold  
Normal human  
Rat  
Rat, giant  
Sprite

## 1 HD

Acolyte  
Bandit  
Beetle, giant fire  
Berserker  
Brigand  
Buccaneer  
Dervish  
Dwarf  
Elf  
Ferret, giant  
Gnome  
Hobgoblin  
Medium  
Merchant  
Mermen  
Nixie  
Nomad  
Orc  
Pirate  
Pixie  
Pterodactyl  
Shrew, giant  
Skeleton  
Snake, spitting cobra  
Stirge  
Termite, swamp  
Trader  
Veteran

## 2 HD

Bat, giant  
Bat, giant vampire  
Beetle, giant oil  
Camel  
Cave locust  
Crocodile  
Dryad  
Fish, giant bass  
Ghoul  
Gnoll  
Golem, wood\*  
Green slime\*  
Herd animal, small  
Horse, riding  
Insect swarm  
Lizard man  
Mule  
Neanderthal  
Pegasus  
Robber fly  
Rock baboon  
Shadow\*  
Shark, bull  
Snake, pit viper  
Spider, giant crab  
Termite, freshwater  
Toad, giant  
Troglodyte  
Veteran  
Wolf  
Yellow mould\*  
Zombie

## 3 HD

Beetle, giant tiger  
Boar  
Bugbear  
Carcass crawler  
Cat, mountain lion  
Crab, giant  
Fish, giant piranha  
Grey ooze  
Harpy  
Hawk, giant  
Hellhound  
Herd animal, medium  
Hippogriff  
Horse, draft  
Horse, war  
Insect swarm  
Living statue, crystal  
Lizard, giant gecko  
Lycanthrope, wererat\*  
Noble  
Shrieker  
Snake, sea snake  
Spider, giant black widow  
Thoul  
Veteran  
Wight\*

## 4 HD

Ape, white  
Bear, black  
Blink dog  
Cat, panther  
Centaur  
Doppelgänger  
Driver ant  
Gargoyle\*  
Gelatinous cube  
Hellhound

## 4 HD Continued...

Insect swarm  
Living statue, iron  
Lizard, giant draco  
Lycanthrope, wereboar\*  
Lycanthrope, werewolf\*  
Medusa  
Ogre  
Rhagodessa  
Scorpion, giant  
Shark, mako  
Snake, giant rattler  
Spider, giant tarantella  
Termite, sea  
Unicorn  
Weasel, giant  
Wolf, dire  
Wraith\*

## 5 HD

Bear, grizzly  
Cat, lion  
Cockatrice  
Fish, giant rockfish  
Hellhound  
Hydra  
Hydra, sea  
Living statue, rock  
Lizard, giant horned  
chameleon  
Lycanthrope, weretiger\*  
Mummy\*  
Ochre jelly\*  
Owl bear  
Pteranodon  
Rust monster  
Snake, rock python

## 6 HD

Basilisk  
Bear, polar  
Caecilia  
Cat, tiger  
Crocodile, large  
Dragon, white  
Hellhound  
Hydra  
Hydra, sea  
Leech, giant  
Lizard, giant  
tuatara  
Lycanthrope,  
werebear\*  
Manticore  
Minotaur  
Rhinoceros,  
normal  
Roc, small  
Sea serpent  
(lesser)  
Spectre\*  
Squid, giant  
Troll  
Warp beast  
Whale, killer

## 7 HD

Bear, cave  
Djinni (lesser)\*  
Dragon, black  
Griffon  
Hellhound  
Hydra  
Hydra, sea  
Vampire\*  
Wyvern

## 8 HD

Cat, sabre-toothed  
tiger  
Dragon, green  
Dragon, sea  
Elemental, air  
(lesser)\*  
Elemental, earth  
(lesser)\*  
Elemental, fire  
(lesser)\*  
Elemental, water  
(lesser)\*  
Fish, giant catfish  
Giant, hill  
Golem, bone\*  
Gorgon  
Hydra  
Hydra, sea  
Invisible stalker  
Octopus, giant  
Rhinoceros,  
woolly  
Salamander,  
flame\*  
Shark, great white  
Treant  
Vampire\*

## 9 HD

Chimera  
Dragon, blue  
Elephant  
Giant, stone  
Hydra  
Hydra, sea  
Lycanthrope, devil  
swine\*  
Vampire\*

## 10 HD

Black pudding\*  
Dragon, red  
Efreeti (lesser)\*  
Fish, giant  
sturgeon  
Giant, frost  
Golem, amber\*  
Hydra  
Hydra, sea

## 11 HD

Dragon, gold  
Giant, fire  
Hydra  
Hydra, sea  
Stegosaurus  
Triceratops

## 12 HD

Elemental, air\*  
Elemental, earth\*  
Elemental, fire\*  
Elemental, water\*  
Giant, cloud  
Hydra  
Hydra, sea  
Roc, large  
Salamander, frost\*  
Titanothera  
Whale, narwhal

## 13 HD

Cyclops

## 15 HD

Crocodile, giant  
Giant, storm  
Mastodon  
Purple worm

## 16 HD

Elemental, air  
(greater)\*  
Elemental, earth  
(greater)\*  
Elemental, fire  
(greater)\*  
Elemental, water  
(greater)\*

## 20 HD

Golem, bronze\*  
Tyrannosaurus rex

## 30 HD

Dragon turtle

## 36 HD

Roc, giant  
Whale, sperm

\* Monster cannot  
be harmed by  
mundane weap-  
ons. Magic or  
silver required.